

DISCLAIMER

Electronic versions of the exhibits in these minutes may not be complete.

This information is supplied as an informational service only and should not be relied upon as an official record.

Original exhibits are on file at the Legislative Counsel Bureau Research Library in Carson City.

Contact the Library at (775) 684-6827 or library@lcb.state.nv.us.

GRAFFITI

What is it?
Where are we?
And
Where do we want to be?



Reno Police Department – Graffiti Unit

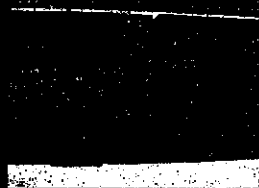
Types of Graffiti

- There are three basic types of graffiti
 - Gang
 - Tagger
 - Juvenile



GANG GRAFFITI

- Gang graffiti is primarily territorial/turf markings
- Threatens or challenges rival gangs
- SSL/SST/MTL/MVR Etc..



TAGGERS

- Taggers tend to run in groups called "CREW" or "KREW"
- A "Crew" is usually a name for a an uncertain number of taggers that aren't necessarily associated with a gang
- Each tagger uses a unique nickname which may consist of a symbol or marking
- Hard to read

