

DISCLAIMER

Electronic versions of the exhibits in these minutes may not be complete.

This information is supplied as an informational service only and should not be relied upon as an official record.

Original exhibits are on file at the Legislative Counsel Bureau Research Library in Carson City.

Contact the Library at (775) 684-6827 or library@lcb.state.nv.us.

The Grow Network™

■ USING ASSESSMENTS
TO TRANSFORM
TEACHING
AND LEARNING

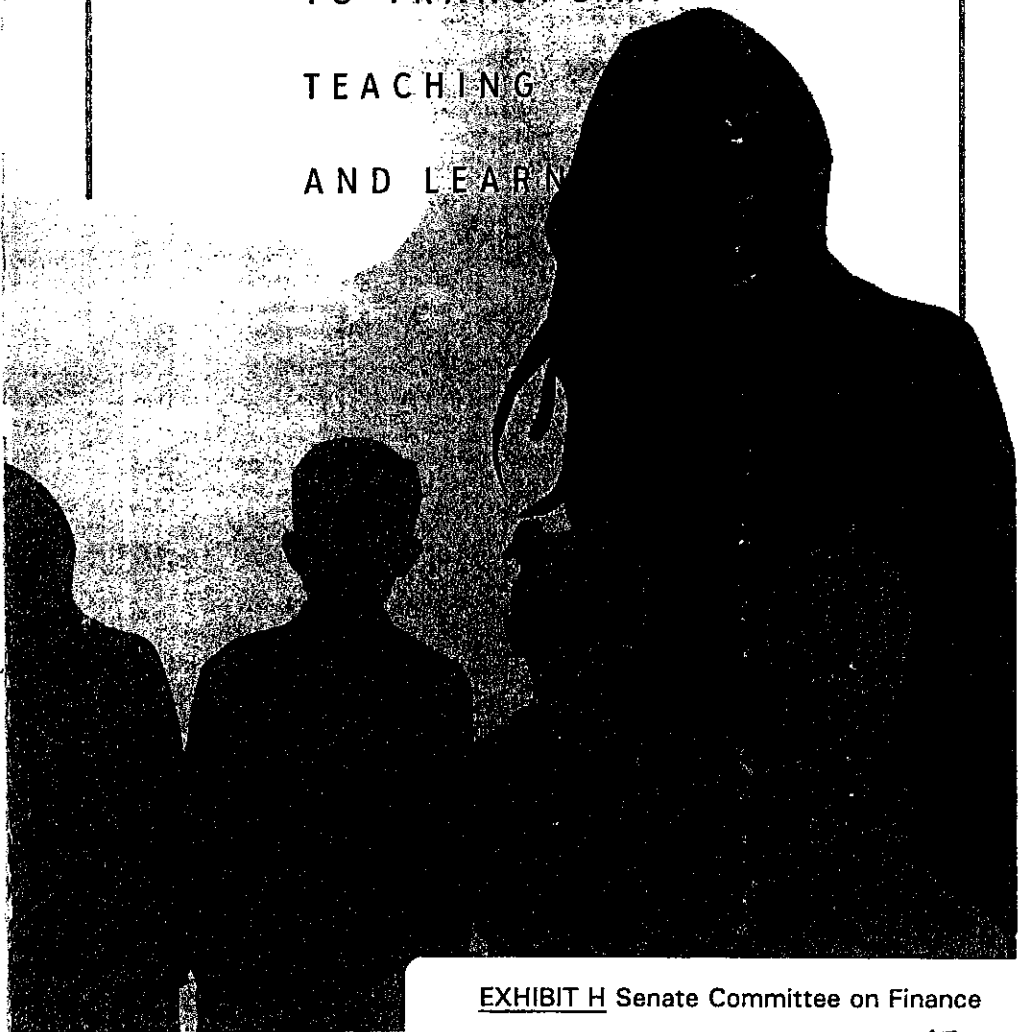


EXHIBIT H Senate Committee on Finance

Date: 3-17-03 Page 1 of 5

I've gone to any number of superintendents and teachers in New York City to ask them about the Grow Network and the overwhelming response is: "This is a powerful tool. Finally something that can help me."

—HAROLD LEVY,
Chancellor, New York City Public Schools

What We Do

The Grow Network turns data into action. Our customized reports and personalized web accounts show how each grade, class, and student performed, suggest teaching strategies tailored to each student's performance, and build understanding of local academic standards.

We Provide

Score Reports that are clear and invite the question, "What can I do to help my students grow?"

Web Tools that are easy to use and give access to student, class, and grade-level performance.

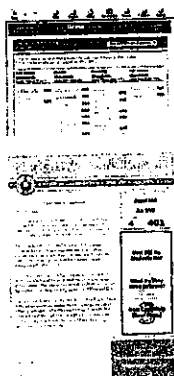
Instructional Materials that build teacher understanding of the standards and suggest teaching strategies tailored to the data.

Professional Development that ensures knowledgeable reuse of our materials and gathers feedback to inform constant improvement.

The Grow Network System

PRINCIPALS &

TEACHERS



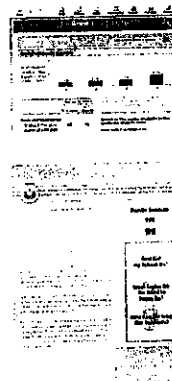
Teachers use the Grow Network tools to understand their class's strengths and weaknesses and to determine appropriate instructional strategies.

The Grow Network tools:

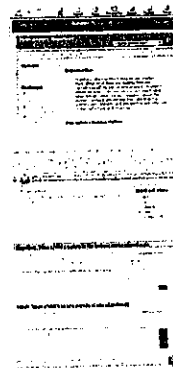
show strengths and weaknesses of each class and each student

provide flexible groupings of students by skill

suggest ability-appropriate strategies and instructional insights to help students grow



PA



The Grow Network tool is one of the most important tools I have seen in a long time, maybe ever.

—KATHI WEISGARTEN,
President, United Federation of Teachers

DISTRICT LEADERS ■

Principals and District Leaders use the Grow Network tools to improve school performance and set professional development priorities.

The Grow Network tools:

Identify instructional priorities for each grade, class, and student.

present strategies for working with teachers on a variety of instructional topics.

give insight into how each topic relates to the standards.

PARENTS ■

Parents use the Grow Network to understand their child's performance and to learn how they can help their child grow.

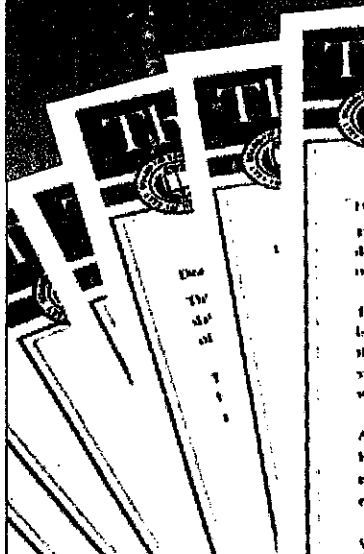
The Grow Network tools:

furnish a clear picture of each child's strengths and areas for improvement.

explain standards that each child is expected to master.

offer suggestions for helping children grow.

www.grownetwork.com



states that \$400 million in test

1% WAS SPAN

Understand and use the results

not to sell

WORTH

the paper it's printed on.

Who We Are

The Grow Network was founded three years ago to address a critical gap in assessment. We found that more and more tests were being given and the results were being used for school and teacher accountability, but not as a tool to understand what kids know. We have conducted hundreds of focus groups with thousands of teachers, principals, and district leaders to understand how to make data truly useful. The result: The Grow Network System of print reports, web tools, instructional materials, and professional development. These tools have been created for half a million students in New York City and have been widely embraced by district leaders, principals, and teachers.

The Grow Reports represent a quantum leap in assessment reporting well beyond anything that either the Division of Assessment and Accountability has been able to produce or other publishers have been able to produce in the past.

— BOB TOBIAS,
Director of Assessment and Accountability, NYC

■ For more information
about how the Grow Network
can help your students
succeed, please contact:

JENNIFER B. LURIA
jluria@grow.net

The Grow Network
386 Park Avenue South, Suite 1605
New York, NY 10016
212-889-5678

