

## DISCLAIMER

Electronic versions of the exhibits in these minutes may not be complete.

This information is supplied as an informational service only and should not be relied upon as an official record.

Original exhibits are on file at the Legislative Counsel Bureau Research Library in Carson City.

Contact the Library at (775) 684-6827 or [library@lcb.state.nv.us](mailto:library@lcb.state.nv.us).



The best person for  
the job just got better.

---

710 West Lake Mead Blvd., North Las Vegas, Nevada 89030

C-108 8

ASSEMBLY WAYS AND MEANS  
DATE: 4-23-03 ROOM: 3137 EXHIBIT C  
SUBMITTED BY: Steven Horaford

A lot of people  
want better  
jobs. Here's  
how you can  
help them.

# Nevada Partners

Home of the Culinary Training Academy



# Goal

Nevada Partners was founded in 1993 as a 501(c)(3) nonprofit organization. Since day one, our objective has been to further improve the lives of minority and underserved Nevadans by providing both pre-employment training and the means to achieve their career goals. Currently, Nevada Partners is the leading work force development, employment and training agency in Southern Nevada, and has trained thousands of prospective employees.

With grants from the Department of Labor, Nevada Partners has reached adults and youths from ages 14 - 21, and provided them with a number of important services, including career counseling, employer screening and job placement, interviewing and resume-writing workshops, as well as tutoring and GED assistance. And to better serve all students, Nevada Partners also offers classes in Spanish.

As the centerpiece program of Nevada Partners, the Culinary Training Academy is a partnership between the gaming/resort community and the Culinary Union. They make it their job to help people get entry-level jobs in food and beverage, housekeeping and cooking for the resort industry. They do the recruiting, the training and the placing. And they've gotten results.

## To better train cooks, you need a better kitchen

That's why we're determined to finish construction on a \$5 million expansion of the Culinary Training Academy facility.

So far, more than \$1 million in federal and local government grants have been secured from the U.S. Department of Housing and Urban Development, Clark County Commission and the City of Las Vegas. We've also secured \$2 million more from the participating gaming employers. And at this time \$2 million is being sought from the U.S. Department of Commerce, Economic Development Administration.

But the project cannot be completed without more support. As of now, we still need \$2 million to finish the job. And hopefully, that's what you can do your part.



## To keep in contact with the places our graduates graduate to.

By communicating with participating employers, we're strengthening relationships with the corporations with whom we place our clients. And all we get is positive feedback. We've found that CTA graduates have improved customer service skills, increased productivity, have a strong work ethic, and the ability to make decisions confidently and efficiently. Also, a recent work force development study of labor/management partnerships demonstrated that CTA graduates worked with their managers better. Hey, employers like that.

Employers have taken notice. Why? Because they get better trained and prepared candidates for the job. Period. They can hire graduates who have specific skills necessary to not only do the job, but to "hit the ground running," without extensive and lengthy on-the-job training periods.

Existing workers also receive upgrade training they need for advancement and promotion.

In these times, with mass layoffs, the employee training programs have become even more important. Dislocated workers have quickly and easily found the resources available to get trained and qualified for a new job.

Nevada Partners succeeds when our clients succeed. For the first quarter ending January 2003, 80 percent of graduates found employment. And 82 percent of the dislocated workers who've used Nevada Partners' services have also found employment. But we're not stopping here. With more funding, and more cooperation with employers, we can positively influence the lives of even more hard-working people ready to take that next step, or in some cases the first step, in their career.



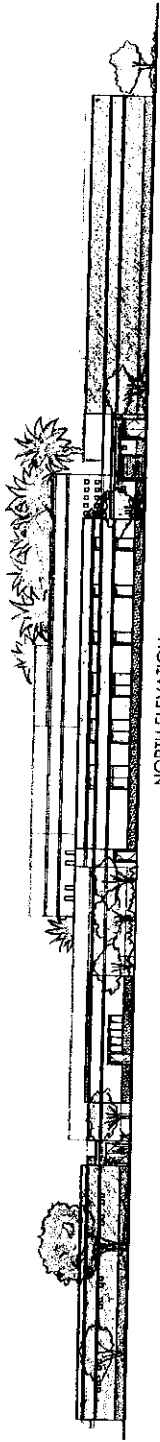
**It's simple. We want to help more people help themselves.**

Currently, more than 16,000 people have graduated from the CTA, and more than 10,000 additional clients have been served by Nevada Partners. What do these numbers really mean? They mean we've found that the partnership between Nevada Partners and the CTA ensures more people benefit from the employment and training resources provided. That's good news.

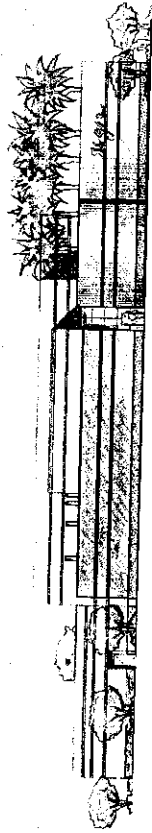
We're also proud to report that in 2002 the CTA sought, and was approved, a post-secondary certified institution by the State of Nevada.

There's no question, our program is working.

To continue to grow and make a positive difference in the community, we need more support. Programs and facilities need funding, and without grants and other subsidies, all of our efforts would be in vain. We hope you recognize this opportunity to fund our cause, and to do your part in helping to empower hard-working, motivated people in Southern Nevada.



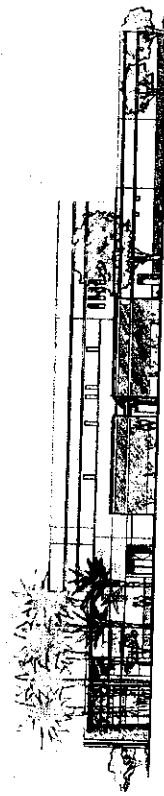
NORTH ELEVATION



WEST ELEVATION



SOUTH ELEVATION

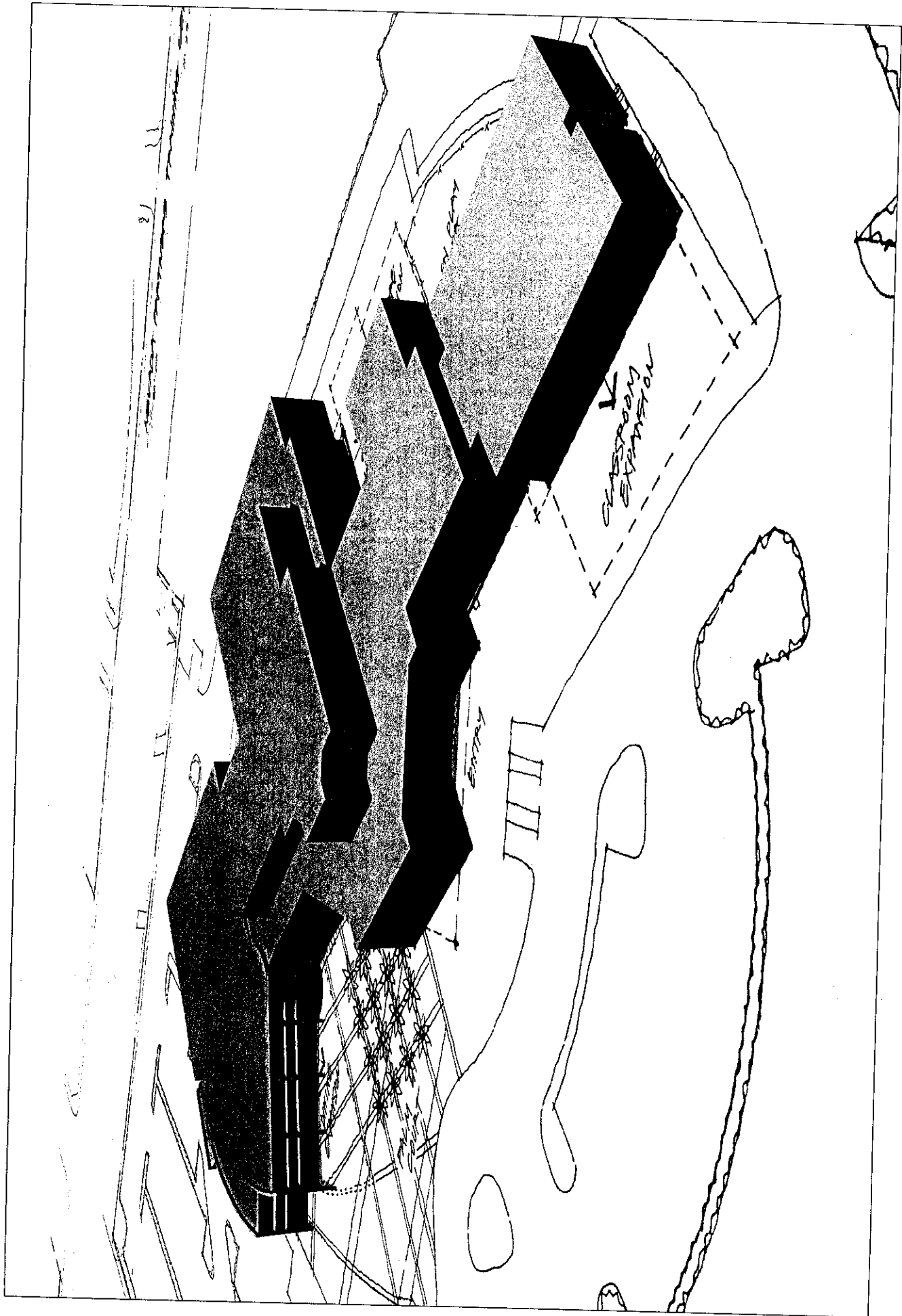


EAST ELEVATION


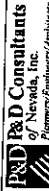
SCALE: 1/16"=1'

A-6 28 8

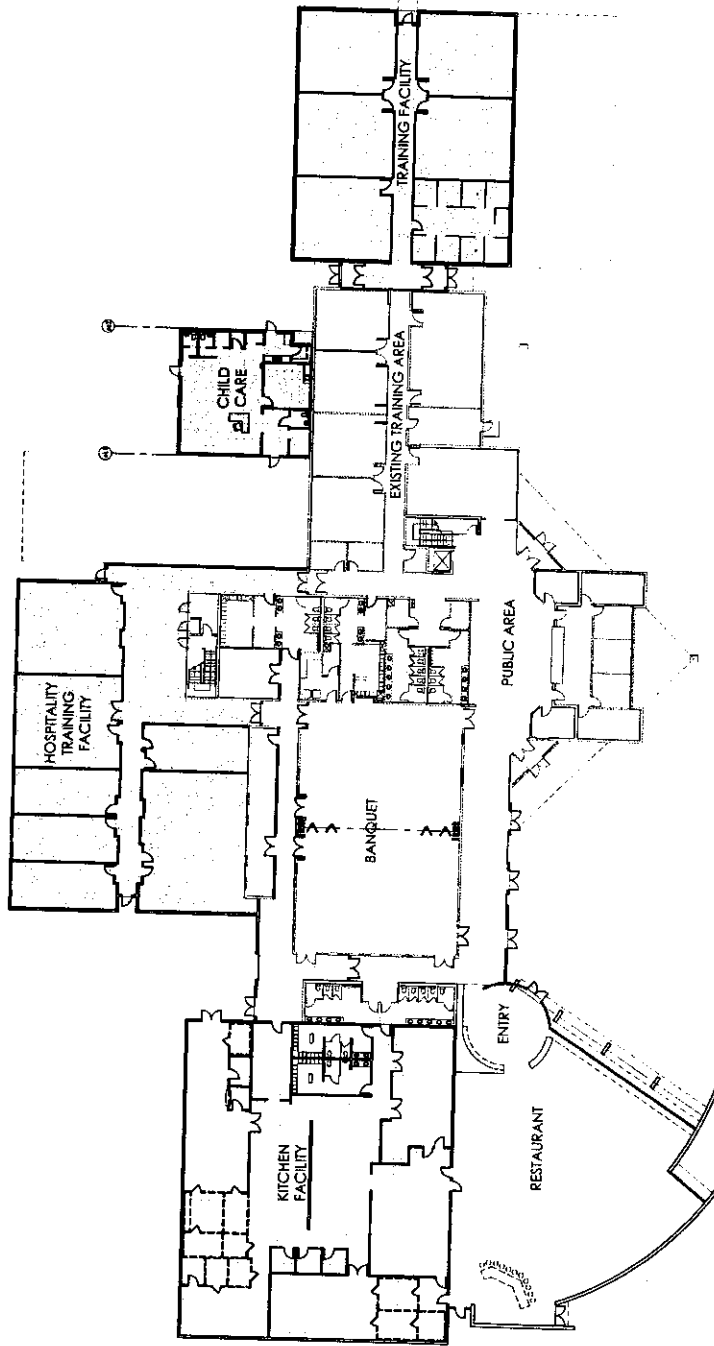
|  |  |   |  |
|--|--|---|--|
| <p><b>DMJMPC</b><br/>         ARCHITECTS<br/>         1015 KENNEDY BLVD., SUITE 110<br/>         LAS VEGAS, NEVADA 89102<br/>         PHONE (702) 432-2447</p> |  | <p><b>P&amp;D E&amp;D Consultants</b><br/>         of Nevada, Inc.<br/>         Planners/Engineers/Architects<br/>         1015 KENNEDY BLVD., SUITE 110<br/>         LAS VEGAS, NEVADA 89102<br/>         PHONE (702) 432-2447</p> |  |
|--|--|---|--|



8778

|   |   |
|---|---|
| <br><b>DMJMPC</b><br>ARCHITECTS<br>1315 S. HARRIS BLVD., SUITE 117<br>PHOENIX, AZ 85026<br>PHONE: (602) 435-2843 | <br><b>PRD P&amp;D Consultants</b><br>of Nevada, Inc.<br>PLANNERS/ENGINEERS/ARCHITECTS<br>1000 W. WASHINGTON AVE., SUITE 100<br>LAS VEGAS, NV 89102<br>PHONE: (702) 735-1100 |
|---|---|





C848

|               |               |               |               |
|---------------|---------------|---------------|---------------|
| <p>DMJMPC</p> | <p>DMJMPC</p> | <p>DMJMPC</p> | <p>DMJMPC</p> |
| <p>DMJMPC</p> | <p>DMJMPC</p> | <p>DMJMPC</p> | <p>DMJMPC</p> |
| <p>DMJMPC</p> | <p>DMJMPC</p> | <p>DMJMPC</p> | <p>DMJMPC</p> |