

DISCLAIMER

Electronic versions of the exhibits in these minutes may not be complete.

This information is supplied as an informational service only and should not be relied upon as an official record.

Original exhibits are on file at the Legislative Counsel Bureau Research Library in Carson City.

Contact the Library at (775) 684-6827 or library@lcb.state.nv.us.

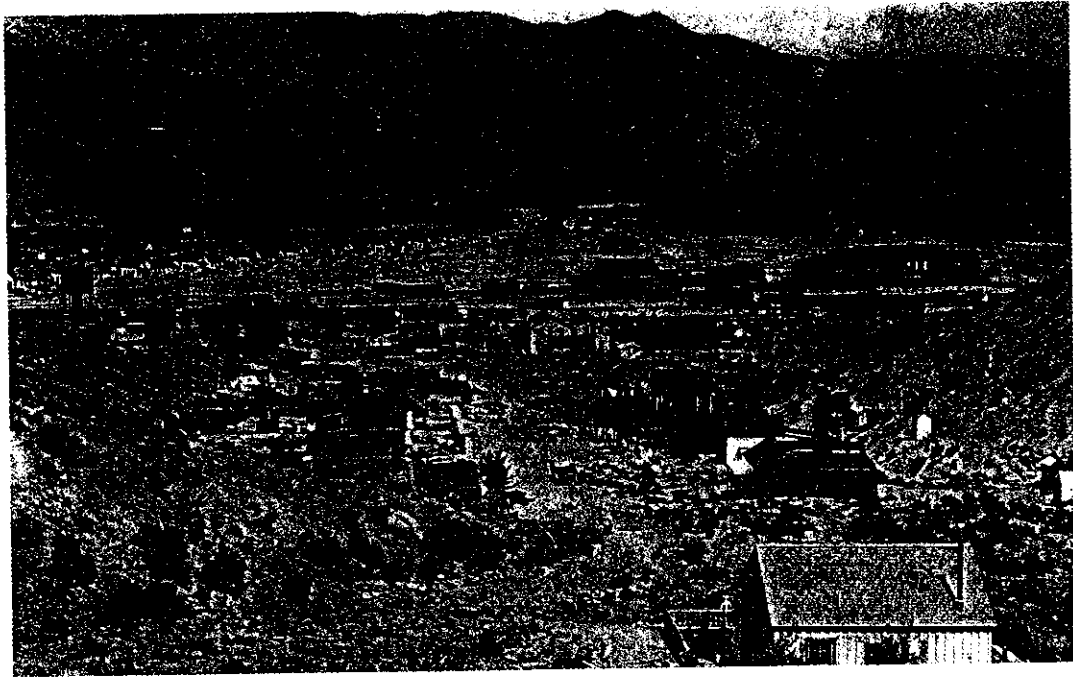
City of Caliente Testimony On
AB 121
Assembly Ways and Means Committee
Mr. Bryan Elkins,
City of Caliente Community Development Director
March 5, 2003

1. Clover Creek empties into the Meadow Valley Wash within the City of Caliente.
2. The Clover Creek watershed covers 364 square miles, all of which drains into the City of Caliente.
3. Major flooding in Caliente was reported in 1906, 1907, 1908, 1910, 1911, 1914, 1922 and 1938.
4. In 1955, Congress approved construction of the Pine Canyon and Mathews Canyon flash flood control dams in the Clover Creek watershed upstream from Caliente.
5. The dams have prevented large bank-cutting and vegetation-clearing floods which had formerly affected the City.
6. However, since construction of the dams, the slower and longer flows in Clover Creek have resulted in increased sedimentation and vegetation growth in the Clover Creek channel.
7. Just prior to its junction with the Meadow Valley Wash, Clover Creek passes through two 12' diameter culverts located under the access road to the State of Nevada's Caliente Youth Center. (only access to and from CYC)
8. Sedimentation in the Clover Creek channel above the access road has reduced the amount of free-flow capacity through the two 12' diameter culverts to less than 2 feet.
9. Due to sedimentation build-up in the culverts, the access road to the State of Nevada Caliente Youth Center effectively serves as a dam on Clover Creek and poses a serious flood hazard to the City of Caliente.
10. In addition, the deposition of sediments and lack of flushing flows in the channel have caused the water table in Caliente to slowly rise.
11. The increased water table in Caliente has resulted in basement flooding and water infiltration into the City sewer system.
12. AB 121 will provide the City of Caliente with \$350,000 to be used to design and construct a single-span replacement bridge over Clover Creek.

c-197

ASSEMBLY WAYS AND MEANS
DATE: 3-5-03 ROOM: 3137 EXHIBIT C
SUBMITTED BY: Bryan Elkins

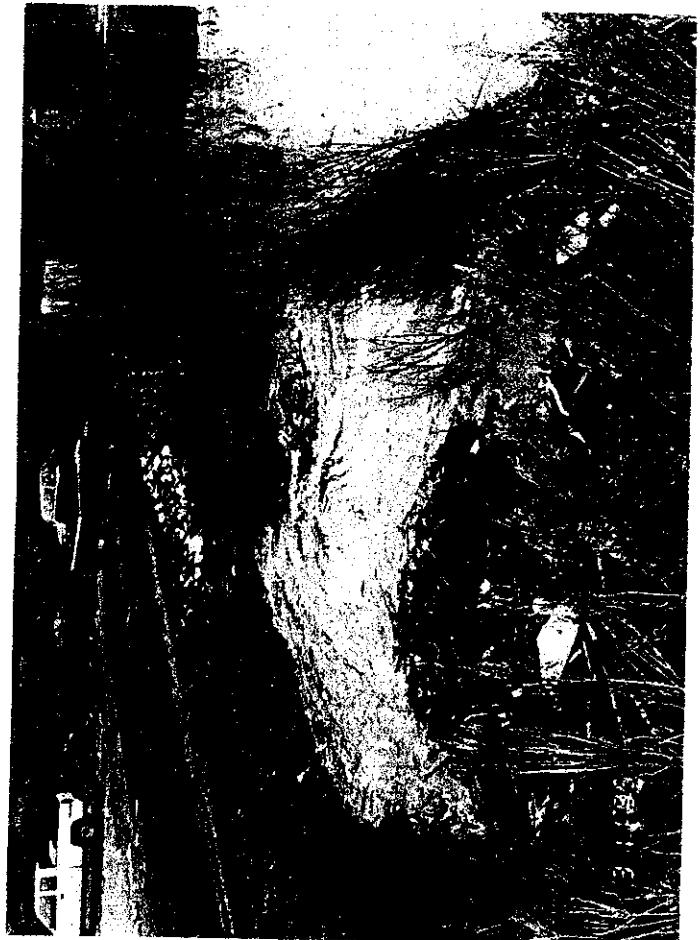
13. Construction of said bridge will eliminate the use of culverts and eliminate the threat of flooding posed by constant sediment buildup within existing culverts.
14. Funds provided to the City of Caliente through AB 121 will be used as follows:
 - a. Design \$ 33,000
 - b. Construction \$ 280,000
 - c. Soils Analysis \$ 5,000
 - d. Surveying \$ 1,000
 - e. Construction Supervision and Inspection \$ 31,000
15. The City of Caliente has several major capital improvement projects underway including Phase I of the Meadow Valley Industrial Park; rehabilitation of sewer collection lines within the community; upgrading of the water system to improve fire flows.
16. To complete these critical projects, The City has obtained in excess of \$3 million dollars in state and federal grants and loans which has required extensive cash and in-kind match on the part of the City.
17. The City of Caliente does not have any additional resources it can apply to the design and construction of the Clover Creek bridge project.



**Caliente, 1910, with flood waters spreading over the
Townsite.
(UNLV Special Collection)**

C-307

ENTRANCE CULVERTS EAST



ENTRANCE CULVERTS WEST

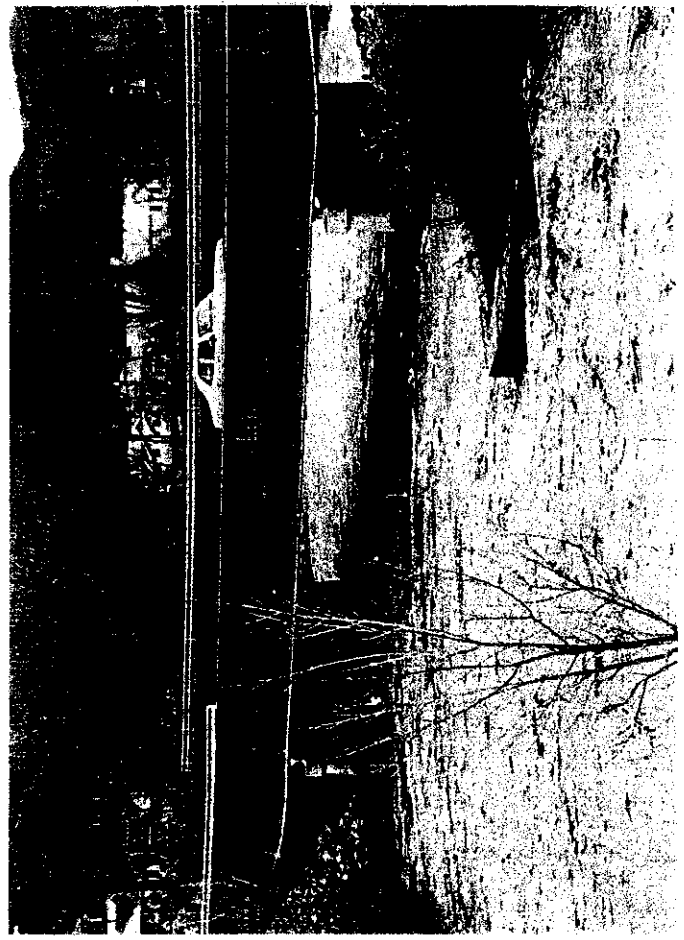


C-4087

CALIENTE FLOOD OF 1995

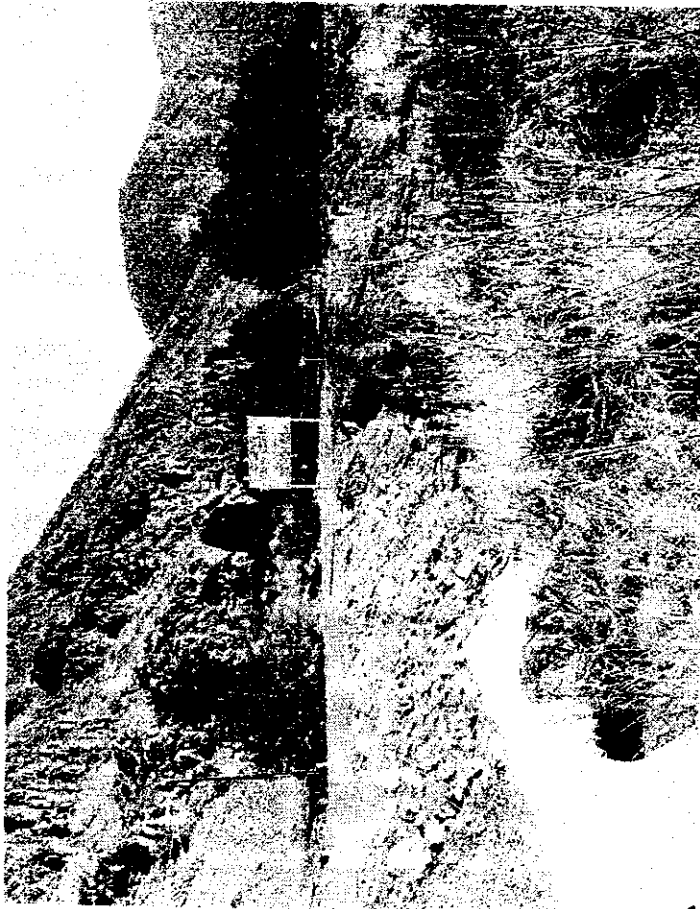


HIGHWAY 93 NORTH BRIDGE

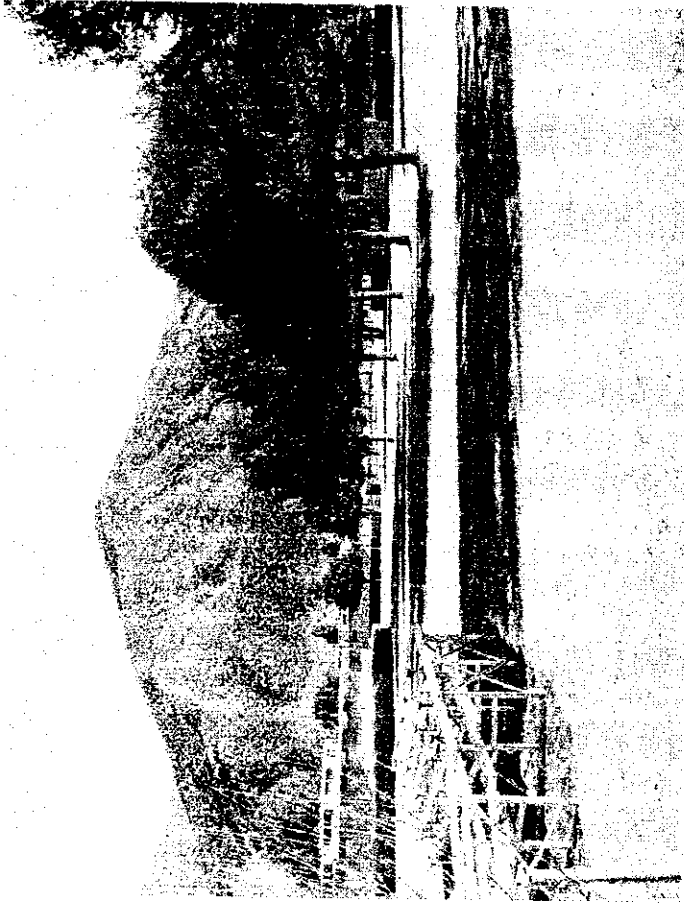


CLOVER CREEK/MEADOW VALLEY WASH CONFLUENCE

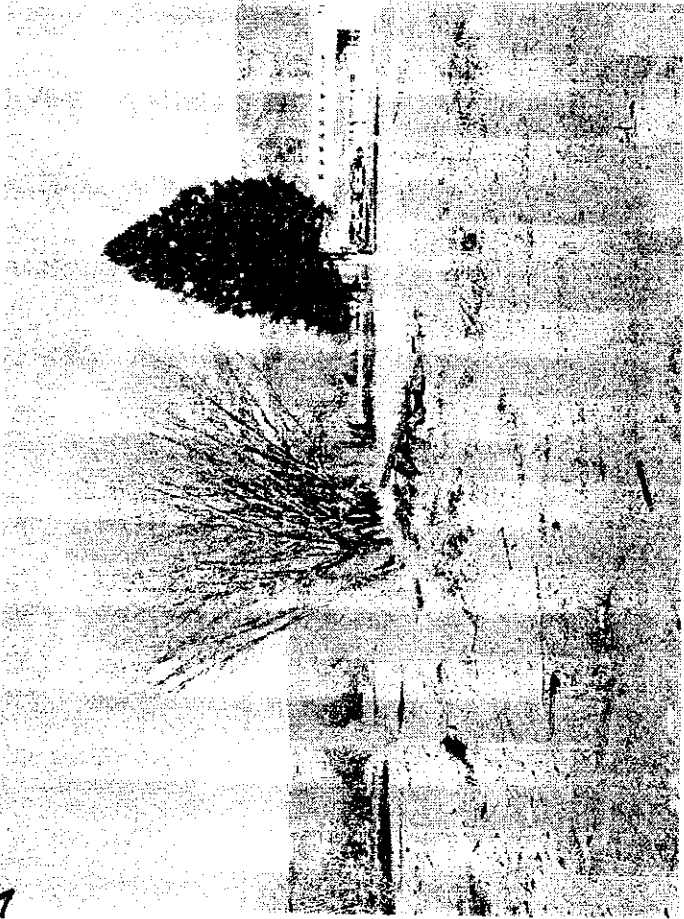
ENTRANCE ROAD TO CYC



CYC - A VERY FLAT CAMPUS



CALIENTE YOUTH CENTER



WASH ADJACENT TO CAMPUS

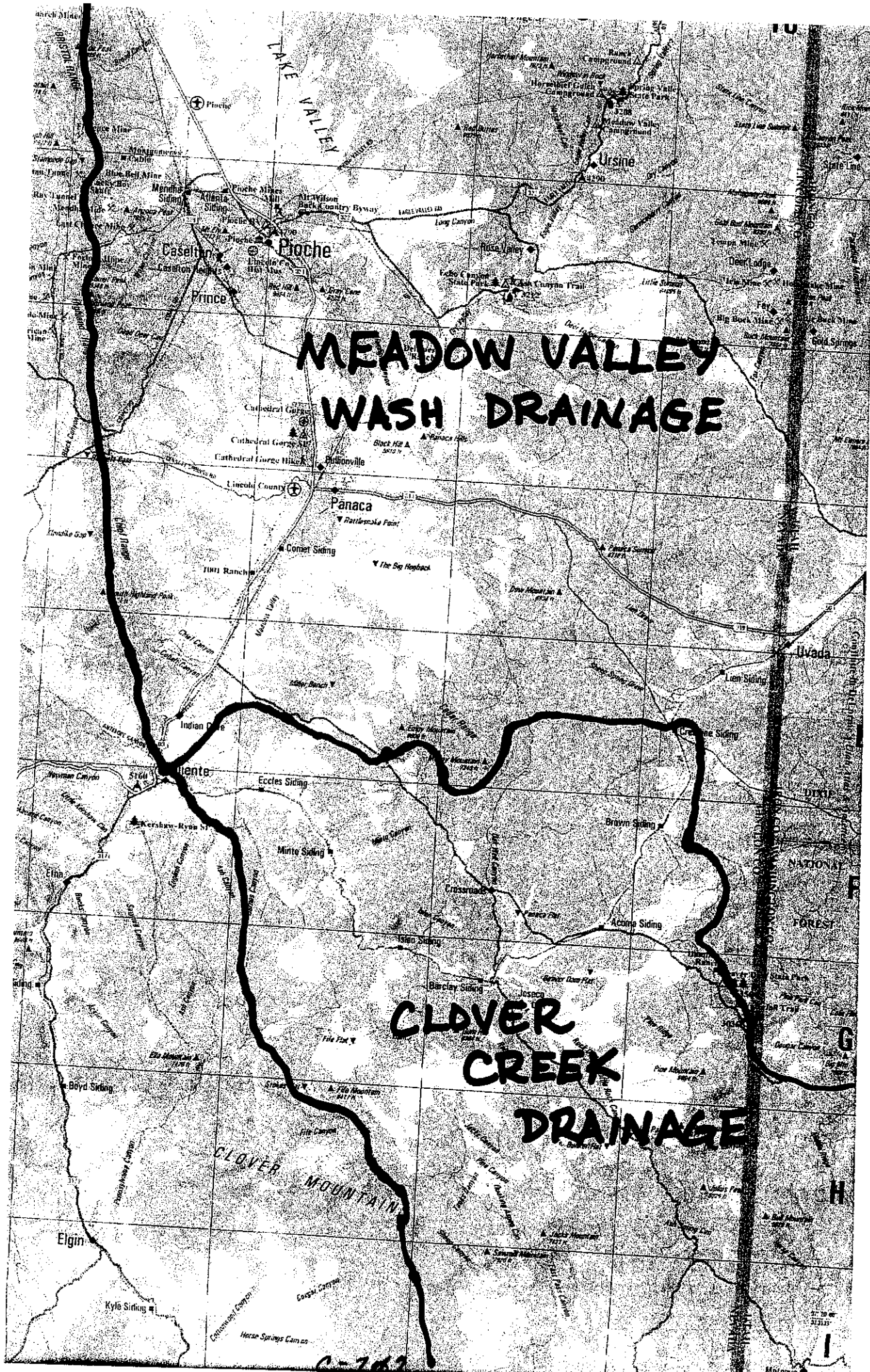


ROAD WITH SILTED WASH

C-5 87



C-697



**MEADOW VALLEY
WASH DRAINAGE**

**CLOVER
CREEK
DRAINAGE**

C-767