

DISCLAIMER

Electronic versions of the exhibits in these minutes may not be complete.

This information is supplied as an informational service only and should not be relied upon as an official record.

Original exhibits are on file at the Legislative Counsel Bureau Research Library in Carson City.

Contact the Library at (775) 684-6827 or library@lcb.state.nv.us.

U. S. Department of Agriculture



Intermountain Region

Forest Service

Original Exhibit on file at the Legislative
Council Bureau Research Library

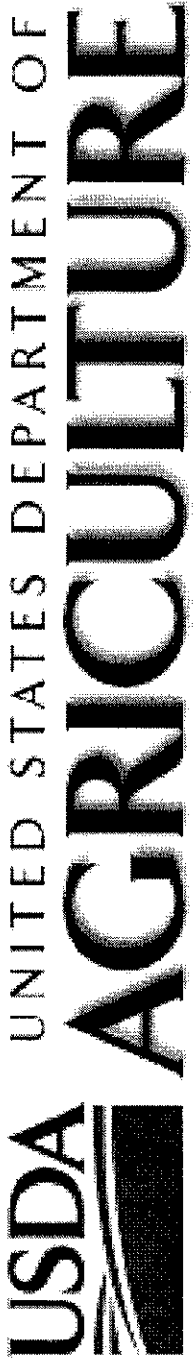
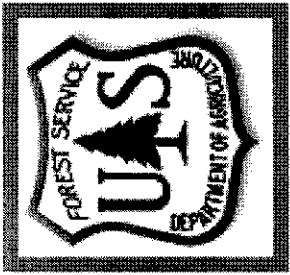
ASSEMBLY NATURAL RES., AGRICULTURE & MINING
DATE: 2/12/03 ROOM: 3161 EXHIBIT I 1-B
SUBMITTED BY: Robert Vaught

Humboldt-Toiyabe National Forest

Provided by: Robert L. Vaught, Forest Supervisor
Tom Baker, Capital City/County Liaison State and
Private Forestry .

Index

- 1) Forest Service Power Point Presentation
- 2) USDA FS CD-R
- 2) Nevada Public Lands Recreation Opportunities Map
- 3) Humboldt-Toiyabe National Forest at a Glance Information Sheet
- 4) Camping and Picnicking on the National Forests of Nevada and Eastern California Brochure
- 5) Nevada and California, Eastern Sierra, Humboldt-Toiyabe National Forest Brochure
- 6) Humboldt-Toiyabe National Forest, U.S. Department of Agriculture Map



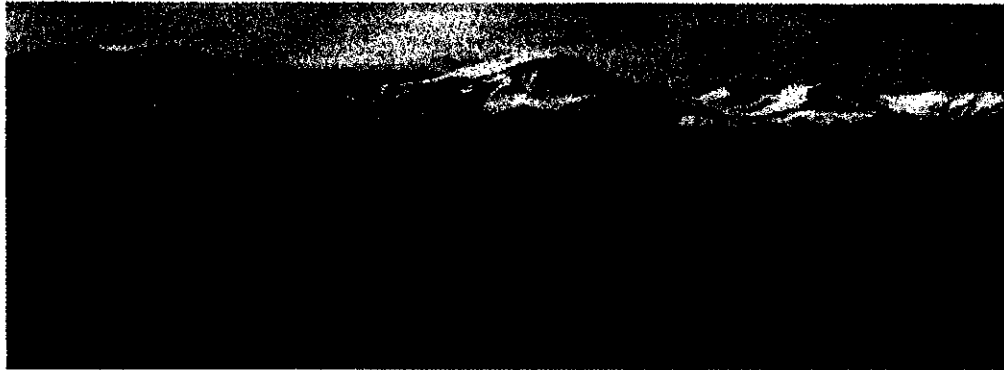
Humboldt-Toiyabe
National Forest
Serving People
and
Caring for the Land
Forest

Forest Facts

- 6.3 million acres
- Largest national forest outside Alaska
- 4.8 million visitor days
- 6,041 miles of roads
- 1,700 miles of trails
- 1,000 developed campsites
- 16 wilderness areas: 919,000 acres

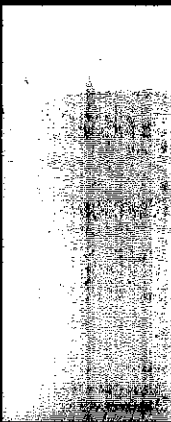


Humboldt-Toiyabe National Forest at a Glance



Forest Facts:

- ✓ 6,332,500 acres
- ✓ 4.8 million visitor days
- ✓ 3rd largest National Recreation Area in the National Forest System
- ✓ 6,041 miles of roads
- ✓ 1,700 miles of trails:
 - 2 National Recreation Trails
 - 1 National Scenic Trail
 - Pony Express Trail
 - Hastings Cutoff (taken by the ill-fated Donner Party)
- ✓ 487 miles of off-road vehicle trails
- ✓ 1,000 developed campsites
- ✓ 16 wildernesses, 919,000 acres (NV-13 @ 779,000 acres, CA-3 @ 140,000 acres)
- ✓ 13 Research Natural Areas
- ✓ 4,418 miles of intermittent streams
- ✓ 17 wild horse and burro territories
- ✓ Wildlife habitat for 102 threatened, endangered, and sensitive species
- ✓ 4th largest cold-water FS fisheries' workload
- ✓ 4.7 million acres in 298 grazing allotments, for approximately 420,000 head months
- ✓ 545 Mineral Plans of Operation
- ✓ 958 Special Use Permits, including the following:
 - 102 Recreation Residences
 - 2 Ski Areas
 - 8 Organization Camps
 - 7 Resorts
 - 29 Communication Sites



Eastern Sierra



I 406 B

Eastern Sierra

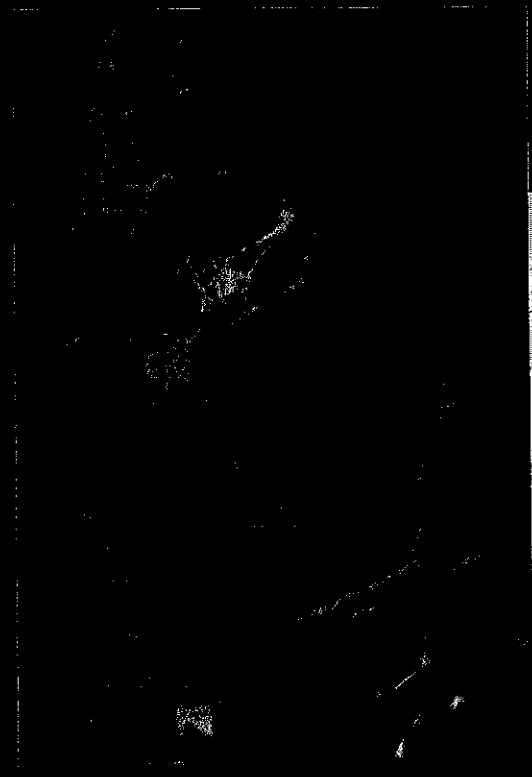
Bridgeport Ranger District's Hoover Wilderness in eastern California

I 706B

Humboldt-Toiyabe National Forest

Hoover Wilderness

The Humboldt-Toiyabe's spectacular 6.3 million acres make up the largest national forest in the lower 48 states. Ten distinctive ranger districts are scattered like an intriguing puzzle across Nevada and a small portion of eastern California. Each piece contains its own unusual features, which offer unlimited recreation. The ranger districts vary from hardy "desert scapes" to snow-capped mountains with lush alpine meadows and timbered canyons. A world of discovery awaits those who explore the Forest's rich historic past. The following page displays the districts and lists numbers and web-sites.



Home of the oldest known living tree species.

*Weaving the
threads of a
natural
tapestry . . .*

iking among the rugged glaciated peaks of Jarbidge Wilderness and East Humboldt Wilderness; zipping via snowmobile or skiing over wind-swept crystal snow on Sunflower Flat and Pole Creek bench; angling for a cutthroat trout on a pristine mountain stream; finding clues left by miners who searched for riches in the rugged Independence Mountains; chancing upon the unexpected sight of bighorn sheep, mule deer, elk, or a mountain lion; hearing the thunder of wild horses pounding across the Ruby Mountains; camping among gnarled bristlecone pine, next to elegant fir and spruce, or within lush groves of quaking aspen; threading through hidden canyons and across rugged peaks . . . a portrait of adventure in Northeast Nevada on the Humboldt-Toiyabe National Forest.

NOBLESSE

Santa Rosa, Mountain City, Jarbidge, and Ruby Mountains Ranger Districts

CENTRAL

Ely, Austin, and Tonopah Ranger Districts

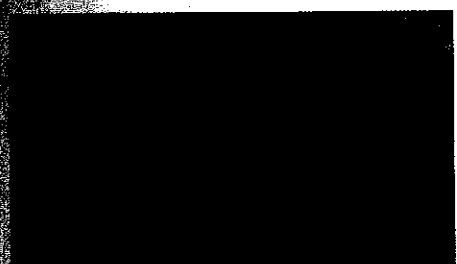


*Discovering
what's around
the bend . . .*

S



Tonopah Ranger District's Table Mountain Wilderness



Wild horses near Ely, Nevada

Carson and Bridgeport Ranger Districts



Lake Tahoe's crystal clear waters and breath-taking mountains promise lifetime memories.

Erasing invisible borders . . .

F

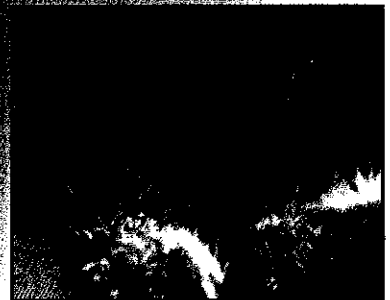
Nevada river

SPRING MOUNTAINS NATIONAL RECREATION AREA

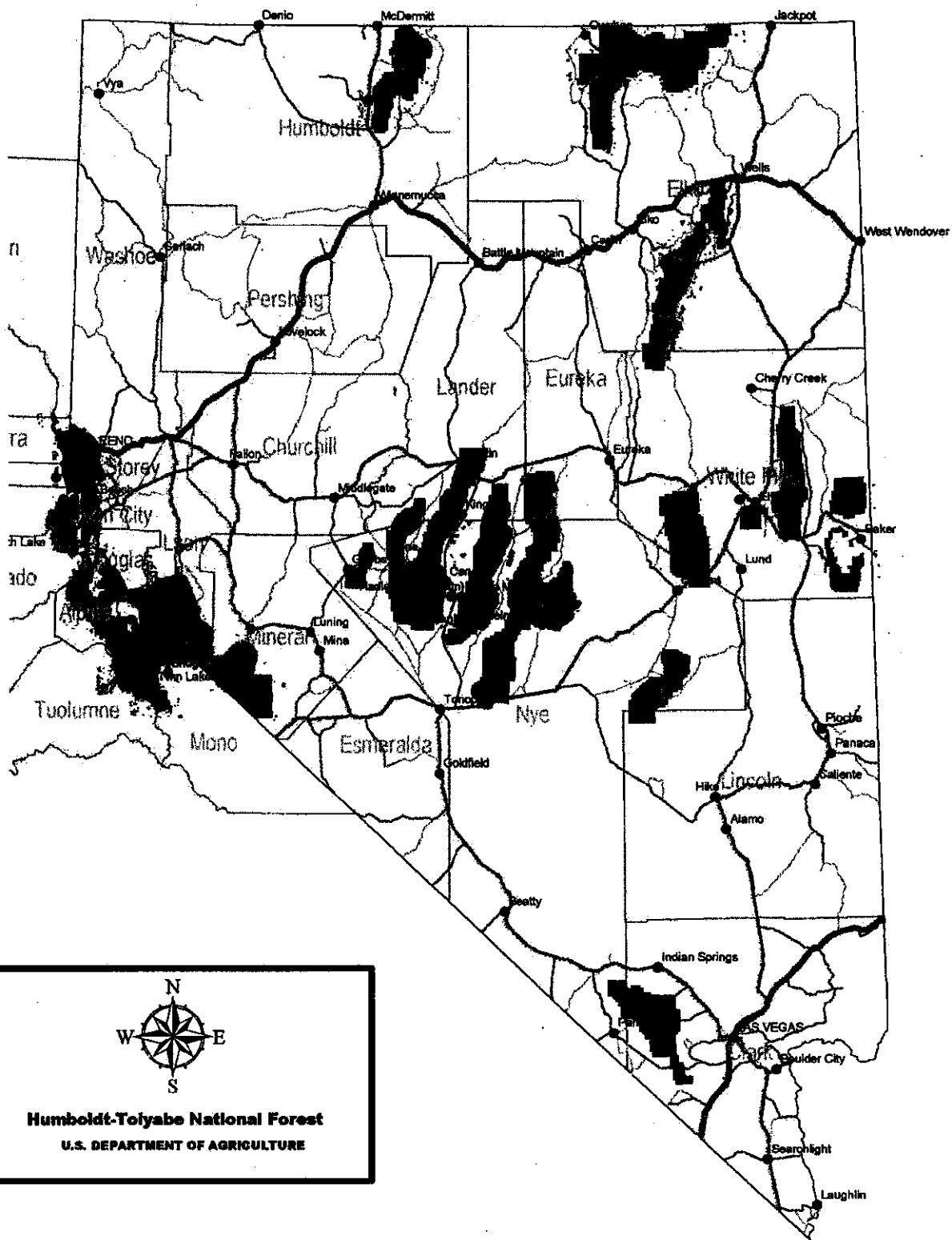
Upper Kyle Canyon's MaryJane Falls


*Exploring high
above the neon
glare . . .*

Hiking up the challenging 11,918-foot summit of Charleston Peak, home to 25 species found nowhere else in the world; finding relief from the hot southern Nevada sun in a cool, forested canyon; gazing at the awesome pinnacle of Spring Mountains; camping and skiing where Native Americans spent their time eons ago; watching wild burros and horses amble across the valley; discovering a lush, green riparian area tucked into a wind-swept canyon; knowing these natural treasures will be here for future generations of visitors in the Spring Mountains National Recreation Area . . . an unexpected reward at the southern tip of the Mojave National Forest.



Monarch butterfly




Humboldt-Toiyabe National Forest
 U.S. DEPARTMENT OF AGRICULTURE