

DISCLAIMER

Electronic versions of the exhibits in these minutes may not be complete.

This information is supplied as an informational service only and should not be relied upon as an official record.

Original exhibits are on file at the Legislative Counsel Bureau Research Library in Carson City.

Contact the Library at (775) 684-6827 or library@lcb.state.nv.us.

Blood Cannabinoids. I. Absorption of THC and Formation of 11-OH-THC and THCCOOH During and After Smoking Marijuana*

Marilyn A. Huestis, Jack E. Henningfield, and Edward J. Cone†

Addiction Research Center, National Institute on Drug Abuse, P.O. Box 5180, Baltimore, Maryland 21224

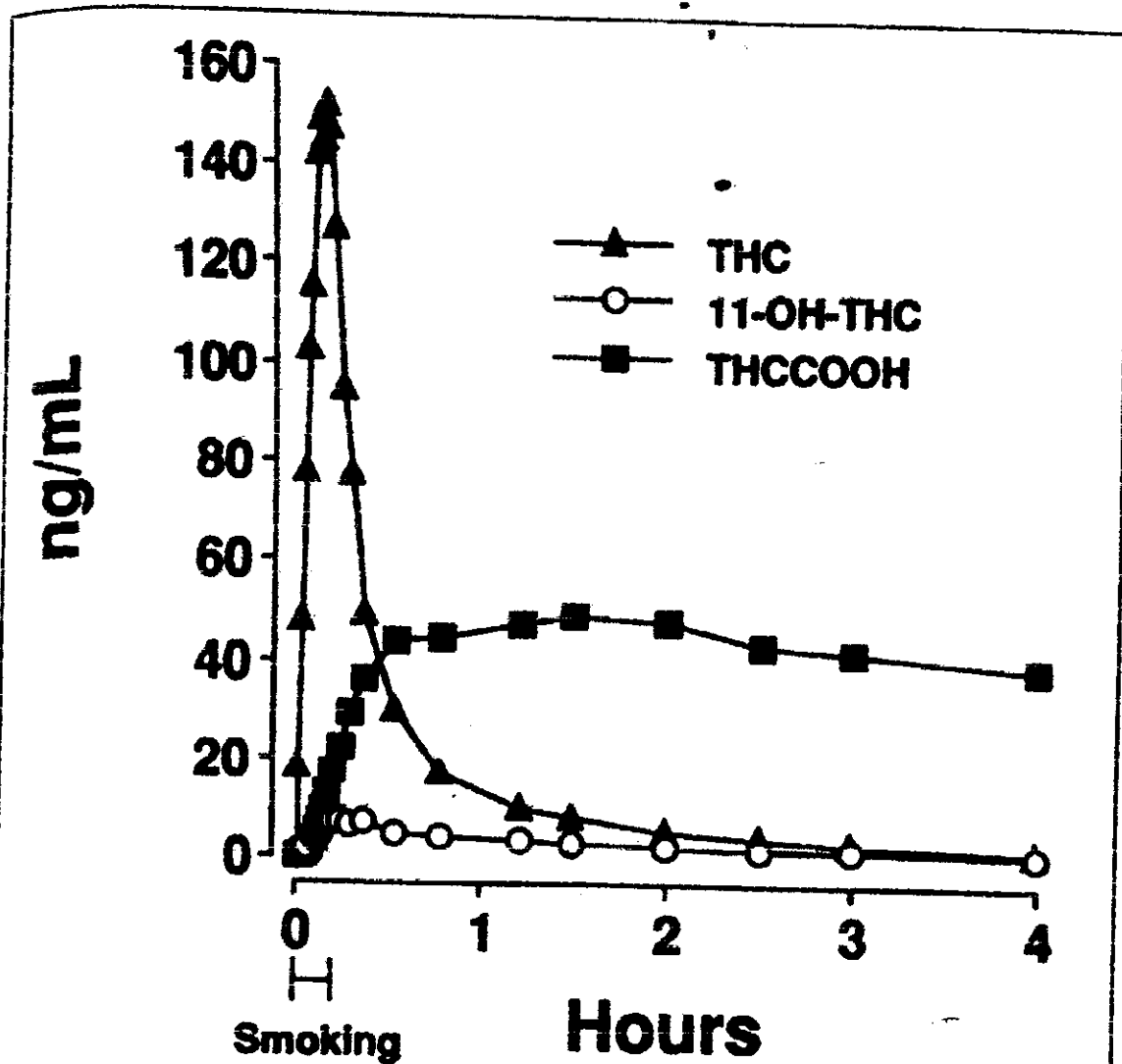


Figure 2. Mean plasma levels of THC, 11-OH-THC, and THCCOOH during and after smoking a single 3.55% THC marijuana cigarette.