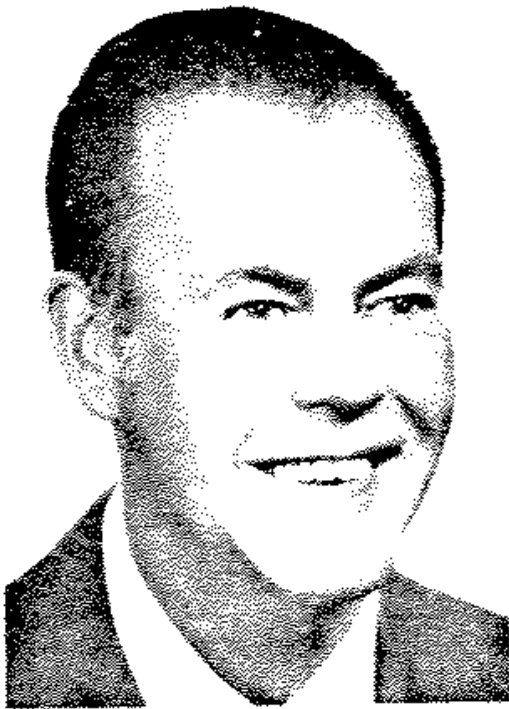


DON A. MOODY

Democrat, Assembly District No. 36 (Esmeralda, Mineral and Nye counties).
Garage and liquor store owner.



Don A. Moody

Born: October 21, 1929, Elko, Nevada.

Educated: Elko Elementary School and Mineral County High School.

Married: Wilma R. Nixon.

Children: Steven and Barbara.

Military: U.S. Air Force, 1948-52.

Recreation: Bowling, golf, fishing and hunting.

Legislative service: Nevada Assembly, 1975-77—two regular sessions of the legislature.

Affiliations: Hawthorne Volunteer Fire Department.

Personal and Professional Achievements: Served 10 years as Mineral County commissioner; president, Nevada Association of County Commissioners; president, Junior Chamber of Commerce, 1960.