

Demographic Profile of Nevada Assembly District No. 13* of the 77th Session (2013)



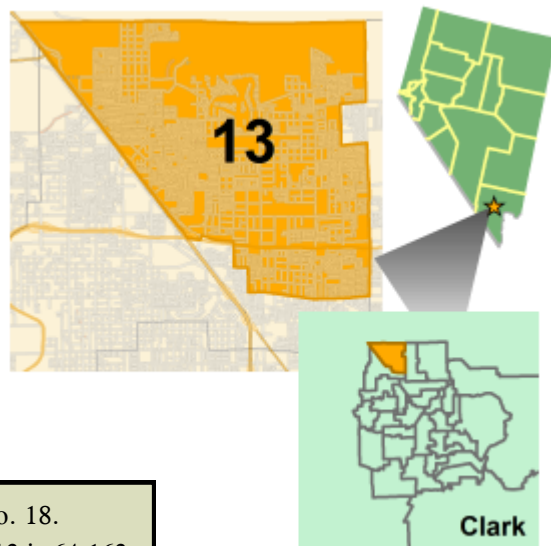
Assemblyman D. Paul Anderson

Republican

Paul.Anderson@asm.state.nv.us

(702) 410-6645 (O)

(702) 735-7372 (F)



Assembly District No. 13 is nested within Senate District No. 18.
Total population from the 2010 Census for Assembly District No. 13 is 64,163.

Race and Ethnicity**

Race/Ethnicity	Assembly District No. 13	Nevada
White	78.3%	73.5%
Black	10.0%	8.0%
AIAN	0.7%	1.1%
Asian	4.7%	7.1%
NHOPI	0.5%	0.6%
Some Other	2.0%	6.2%
Two or More	3.7%	3.6%
Hispanic or Latino	17.7%	26.1%

Age Distribution

Age Range	Assembly District No. 13	Nevada
< 5	8.1%	7.0%
5-17	23.4%	17.7%
18-39	27.9%	30.9%
40-59	28.9%	26.9%
60-74	9.8%	12.7%
> 74	1.9%	4.6%

Educational Attainment (25 Years and Older)

Education Level	Assembly District No. 13	Nevada
No High School Diploma	6.9%	15.7%
High School Graduate	27.0%	29.2%
Associate's Degree	38.1%	32.9%
Bachelor's Degree	18.3%	14.7%
Graduate Degree	9.5%	7.4%

Household Income

Income	Assembly District No. 13	Nevada
< \$25,000	6.6%	19.5%
\$25,000-34,999	3.4%	10.6%
\$35,000-49,999	9.0%	14.3%
\$50,000-74,999	20.1%	20.6%
\$75,000-99,999	21.1%	13.7%
\$100,000-149,999	23.3%	13.4%
\$150,000-199,999	10.5%	4.3%
> \$199,999	6.0%	3.6%

Employment By Industry—Top Five

Industry	Assembly District No. 13	Nevada
Government	17.4%	11.7%
Accommodation and Food	11.8%	15.2%
Professional	10.4%	9.5%
Health Care	9.3%	7.9%
Retail	8.4%	10.8%

Veteran Status

Veteran Type	Assembly District No. 13	Nevada
Gulf War 1990–2011	34.9%	22.3%
Other Wartime	36.8%	51.8%
Peacetime	28.4%	25.9%

Active Voters by Party†

Party	Assembly District No. 13	Nevada
Democrat	37.0%	42.1%
Independent American	4.9%	4.7%
Libertarian	0.6%	0.7%
Non-Partisan	17.4%	17.5%
Other	0.5%	0.6%
Republican	39.6%	34.4%

Home Occupancy Status

Status	Assembly District No. 13	Nevada
Owner Occupied	81.9%	59.1%
Renter Occupied	18.0%	40.8%
Vacant	9.2%	14.9%

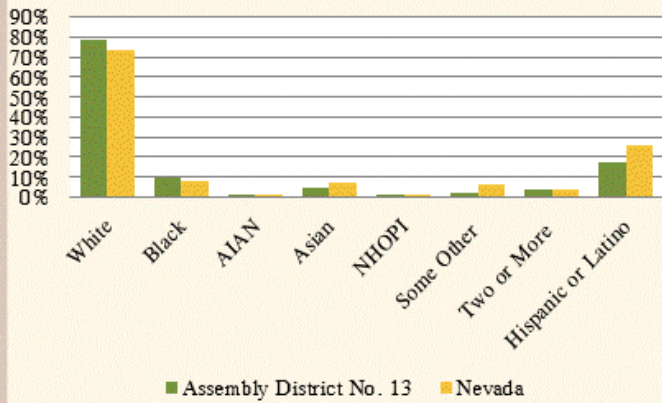
*Source: American Community Survey, United States Census Bureau, 2011.

**The "Hispanic or Latino Origin" category is not considered a racial group by the U.S. Census Bureau. Only the other seven categories shown on this page will total 100 percent. The U.S. Census Bureau has reported that, in the past, a majority of persons selecting the "Some Other Race" category were of Hispanic or Latino origin. Please note that American Indian and Alaska Native is represented as AIAN and Native Hawaiian and Other Pacific Islander is represented as NHOPI.

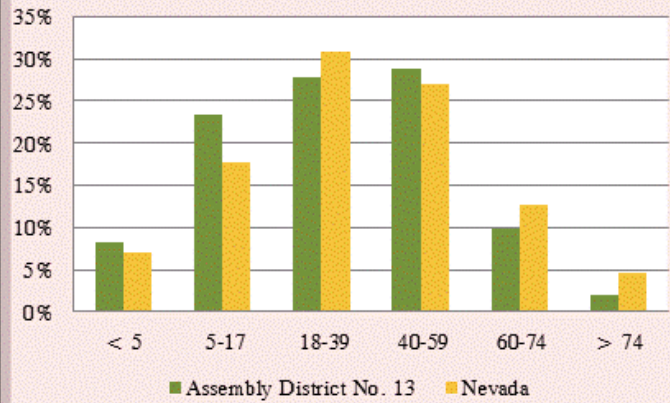
†"Active Voter" includes any registered voter who is legally entitled to vote. Source: Secretary of State, December 2012.

Statistical Profile of Nevada Assembly District No. 13 of the 77th Session (2013)

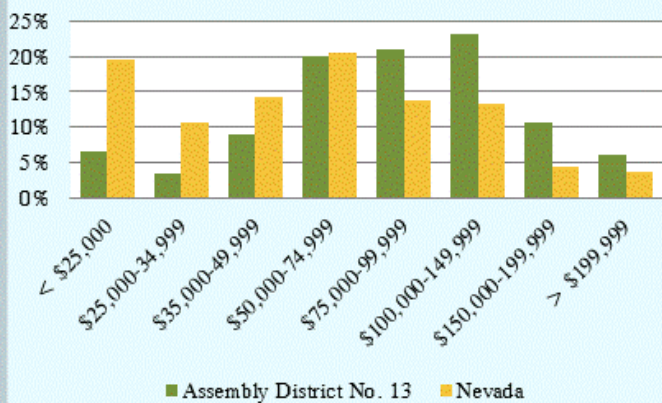
Race and Ethnicity**



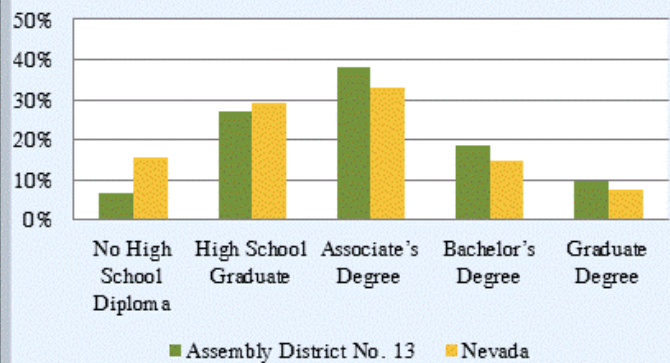
Age Distribution



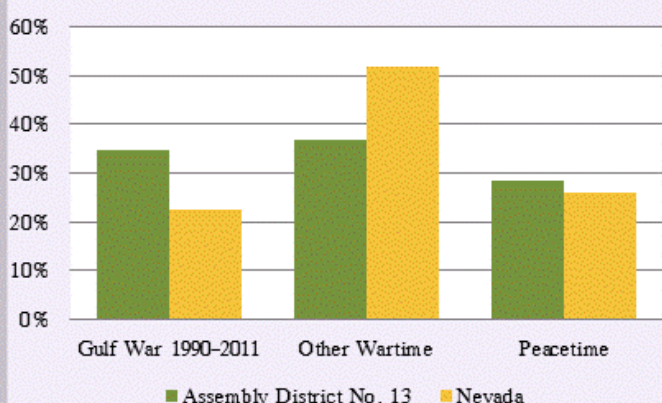
Household Income



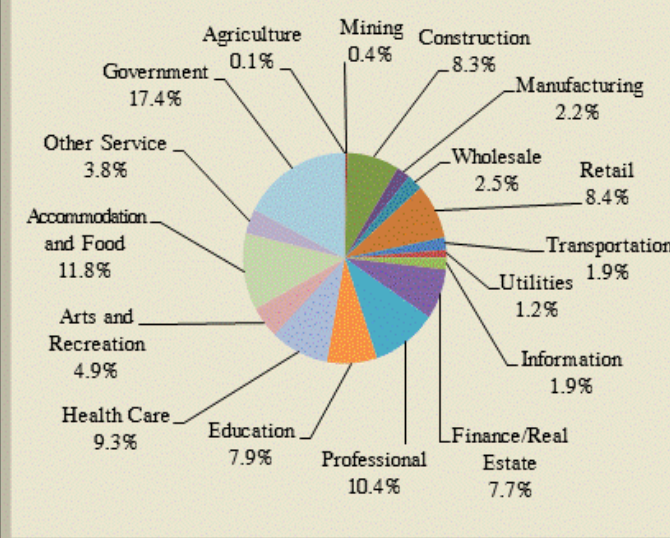
Educational Attainment (25 Years and Older)



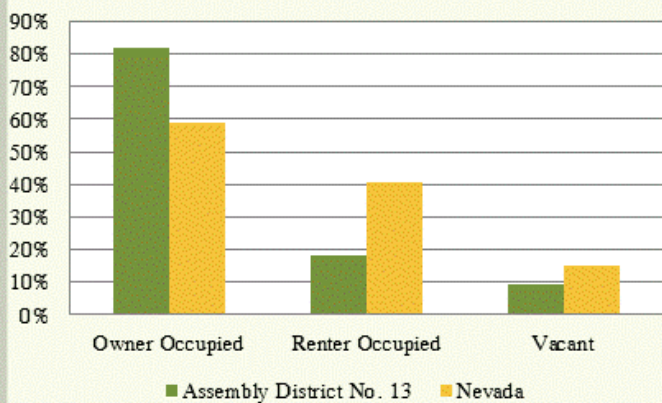
Veteran Status



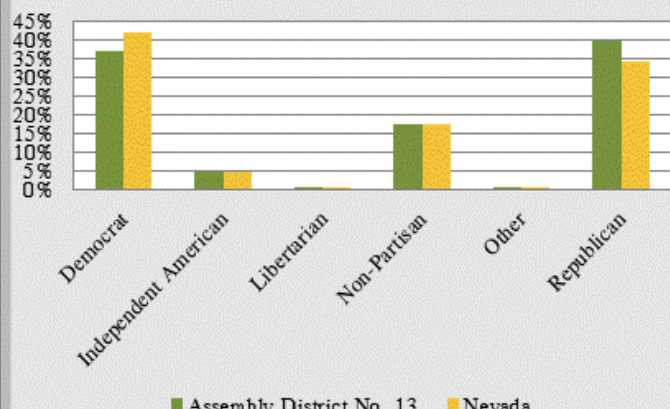
Employment By Industry



Home Occupancy Status



Active Voters By Party†



**Hispanic or Latino is reported by the U.S. Census Bureau as a language group, separately. Racial population data is based on self-identification. Respondents have the option of selecting one or more races. Please note that American Indian and Alaska Native is represented as AIAN and Native Hawaiian and Other Pacific Islander is represented as NHOPI.
†Source: Secretary of State, December 2012.