

**REDISTRICTING AND  
REAPPORTIONMENT PROPOSAL**  
**Board of Regents**  
**Nevada System of Higher Education**

**Nevada Legislature Interim Committee to  
Conduct an Investigation into Matters  
Relating to Reapportionment and  
Redistricting**

---

Joe Reynolds  
Chief General Counsel  
Nevada System of Higher Education

October 23, 2021



# Redistricting Timeline

## Participated in 2019-20 legislative Interim Committee meetings:

- **January 27, 2020:** Attended first meeting of the Committee to Conduct an Interim Study of the Requirements for Reapportionment and Redistricting.
- **May 27, 2020:** Attended second Interim Committee meeting and provided brief introduction and overview of existing Regent districts.
- **August 27, 2020:** Attended third Interim Committee meeting - coordinated with LCB to purchase necessary computer software license for redistricting.
- **October 20, 2020:** Attended last Interim Committee meetings where recommendations were adopted for submittal to the 2021 Legislature.

Monitored public input at each of the Committee hearings.

# Redistricting Timeline

- **February 1, 2021:** 81st Legislative Session began – monitored and maintained compliance with the Joint Rules adopted by the Nevada Legislature addressing the redistricting process..
- **March 4-5, 2021:** Provided detailed presentation at Board of Regents meeting on redistricting law and process; provided overview of 2019 population estimates and their impact on existing Board of Regents districts; invited public comment on the process.
- **August 12, 2021:** Citing Covid-19, hurricanes and wildfires, civil unrest and numerous legal challenges, the Census Bureau announced that there would be a delay in the census process and a delay in providing redistricting data to the states. Ultimately, the Census Bureau delivered redistricting data to the states on **August 12, 2021.**

## Redistricting Timeline (Continued)

- **September 1, 2021: Redistricting Data as Certified by the Legislative Counsel Bureau provided to NSHE.** On September 1, 2021, the Legislative Counsel Bureau provided the 2020 Census redistricting data to NSHE as provided to the states by the United States Census Bureau and that also included the reallocation of inmates to their last known residential address prior to incarceration as required by Assembly Bill 450 (2019). This LCB certified data was used by NSHE in the redistricting process.
- **September 9, 2021:** Presented a proposed redistricting plan to the Board of Regents at its quarterly meeting on September 9, 2021. The Board unanimously approved the proposed redistricting plan for recommendation to and consideration by the Nevada Legislature.

Public comment was invited at each of the Board of Regents' meetings that reapportionment and redistricting. Each meeting had multiple public comment periods available to the public.

# Current Regent Districts **prior to redistricting**

2020 Census as validated by LCB after inmate reallocation pursuant to AB450 (2019)

Active Matrix				
Total Population Tabulation 2020 Census				
DISTRICT	All Persons	Target	Dev.	Difference
1	251,940	238,816	▼5.5%	13,124
2	218,636	238,816	-8.5%▲	-20,180
3	227,862	238,816	-4.59%✓	-10,954
4	218,546	238,816	-8.5%▲	-20,270
5	212,434	238,816	-11.0%▲	-26,382
6	288,653	238,816	▼20.9%	49,837
7	217,248	238,816	-9.0%▲	-21,568
8	248,409	238,816	4.02%✓	9,593
9	221,377	238,816	-7.3%▲	-17,439
10	239,300	238,816	0.20%✓	484
11	239,853	238,816	0.43%✓	1,037
12	237,483	238,816	-0.56%✓	-1,333
13	282,873	238,816	▼18.4%	44,057
Assigned	3104614			
Total Pop	3104614			
Unassigned	0			

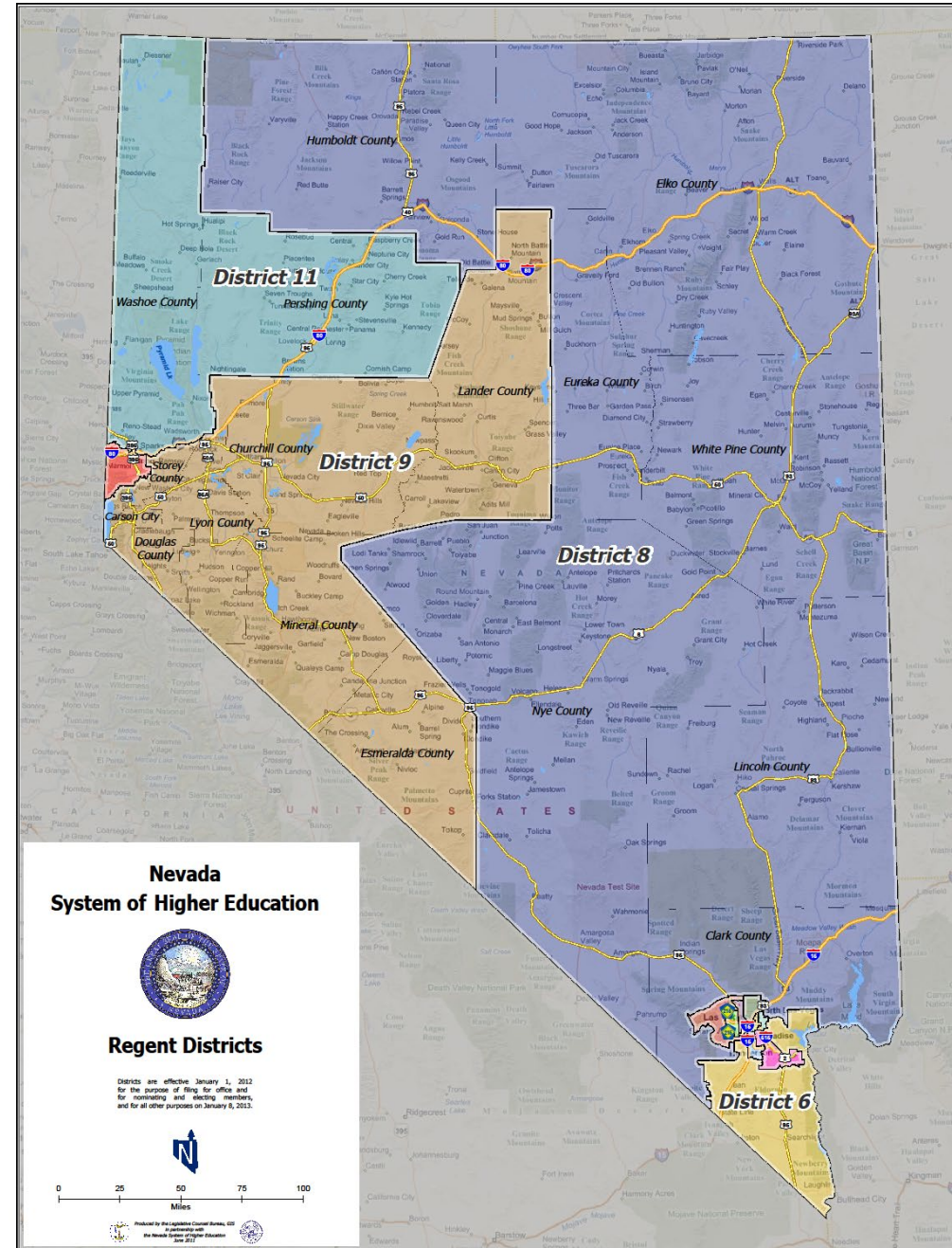
Without redistricting:  
Overall Population Deviation of 31.92%

## Statewide Distribution: Board Of Regents Districts 2020 Population (2020 Census Data)

- ▶ Clark County: 2,265,461 = **72.97%** of the state's population.  
**72.97%** of 13 districts = **9.49 districts in Clark County.**
- ▶ Rest of the state: 839,153 = **27.03%** of the state's population.  
**27.03%** of 13 districts = **3.51 districts in the rest of the state.**

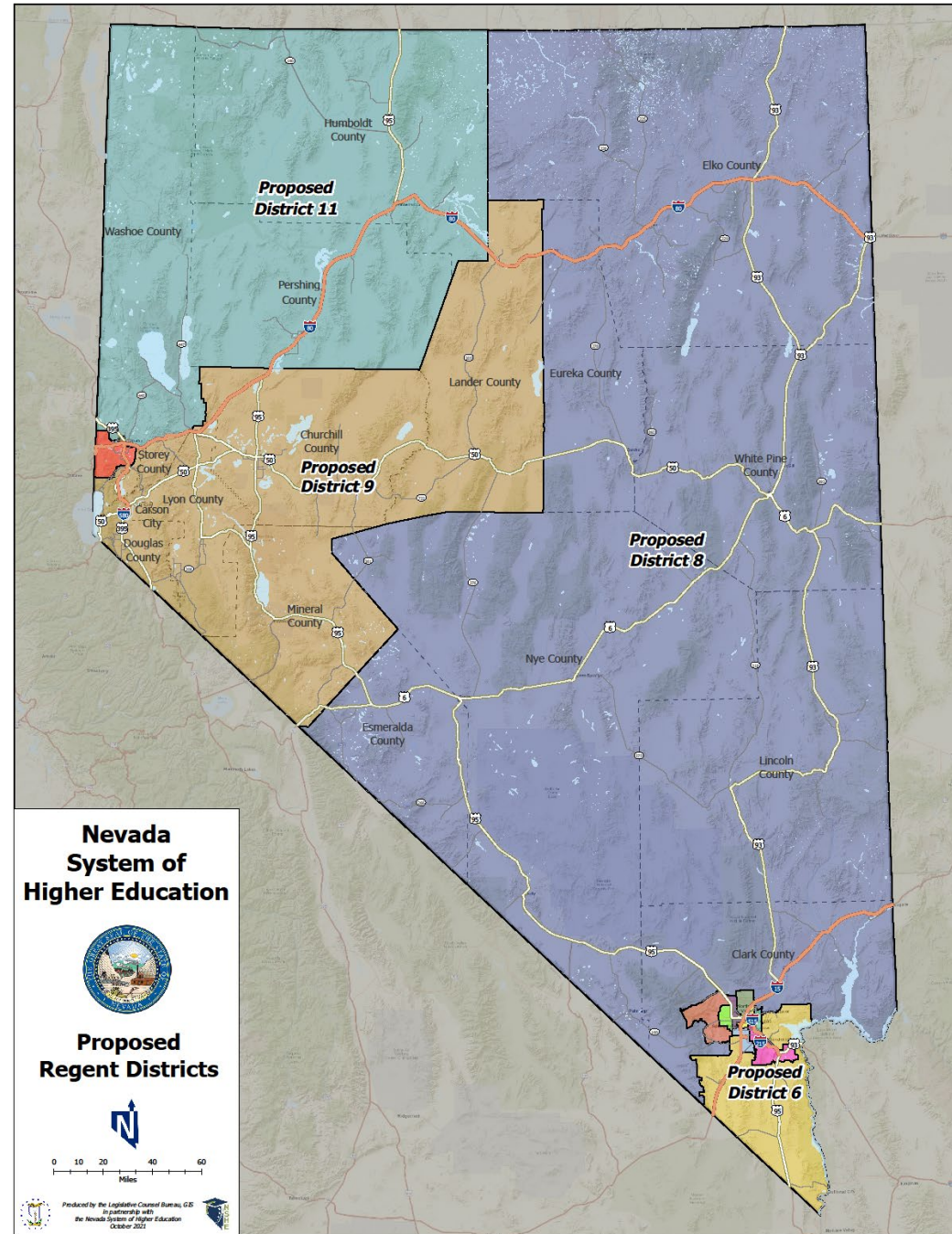
# Current Regent Districts

## Statewide Districts



# Proposed Regent Districts

## Statewide Districts

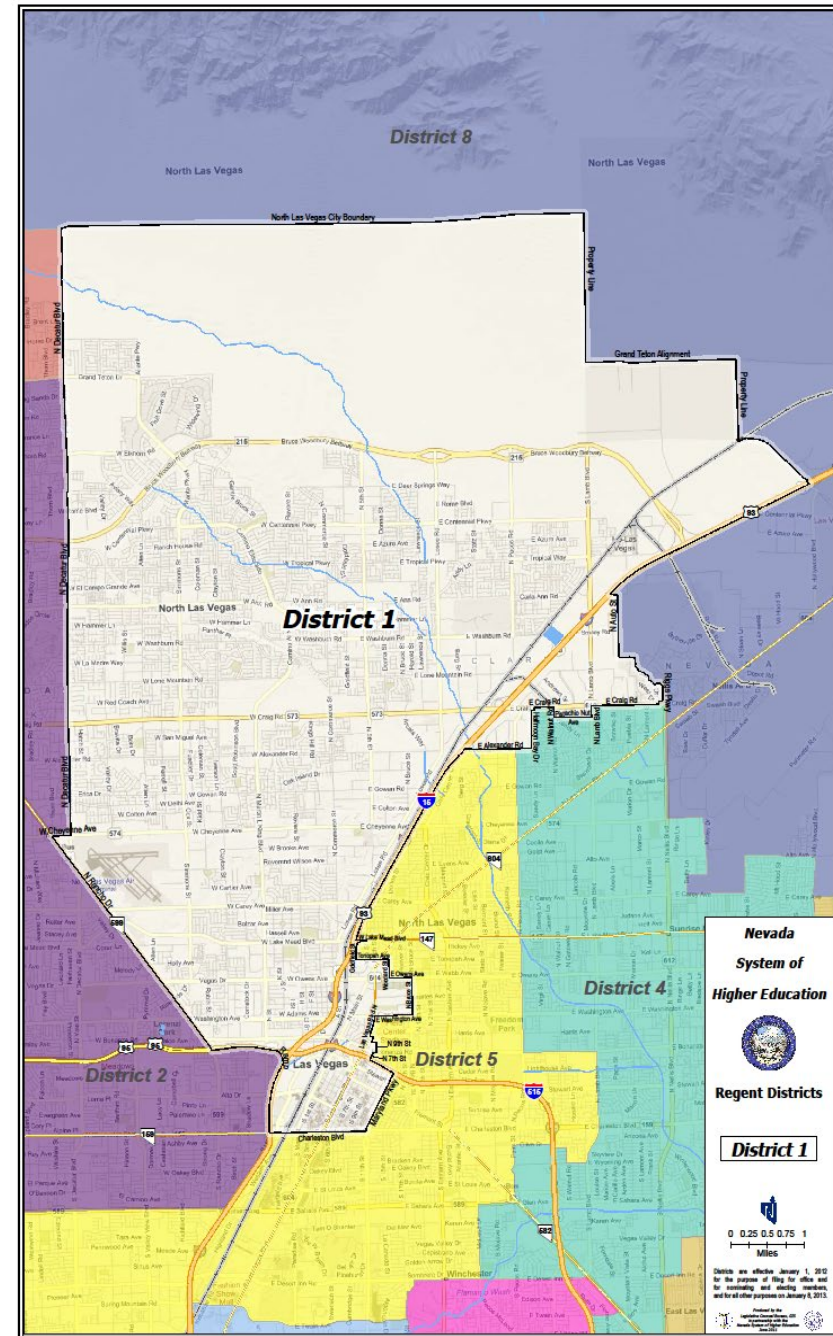




# Current District 1

District 1 - Regent Perkins

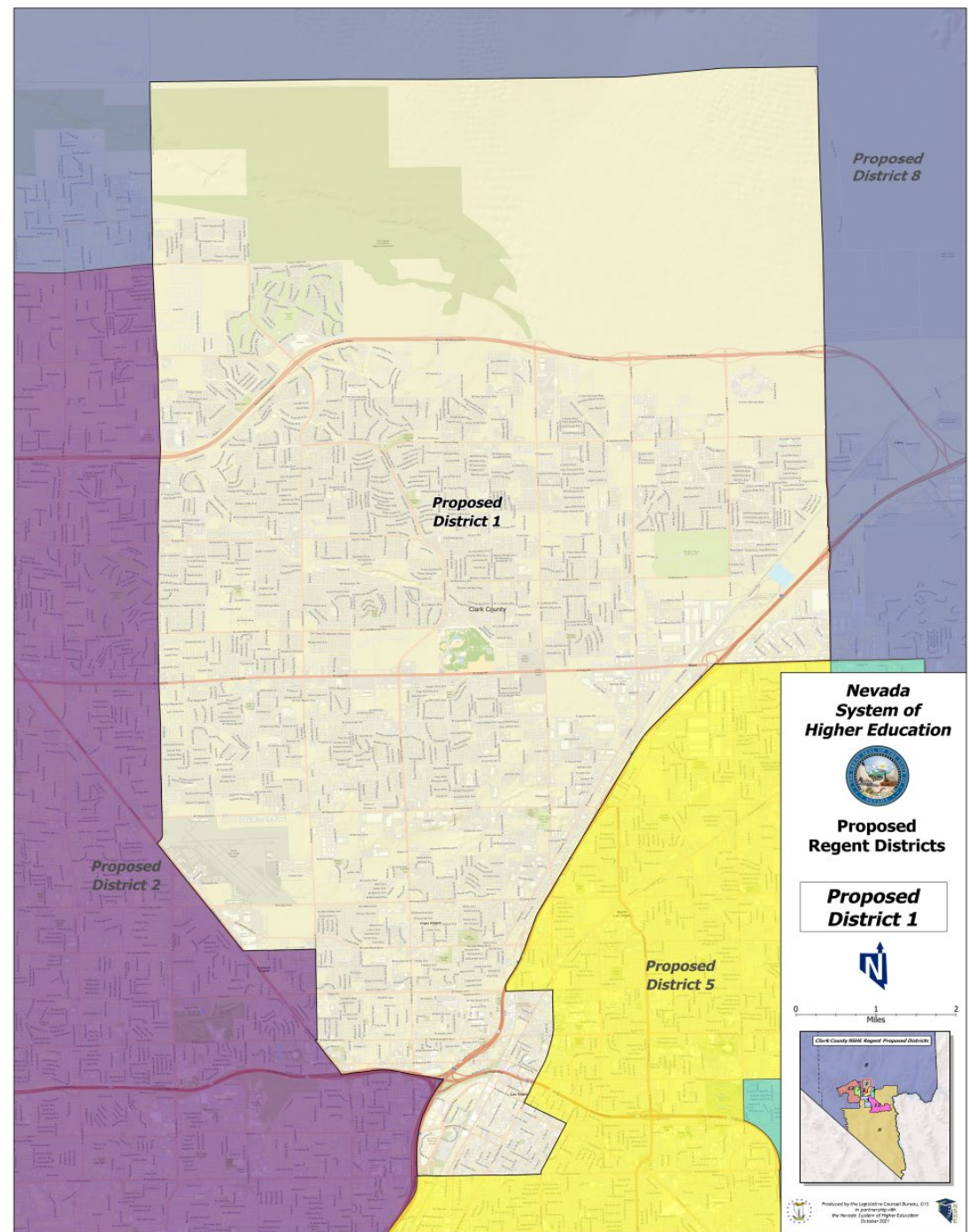
Clark County (part)



# Proposed District 1

District 1 - Regent Perkins

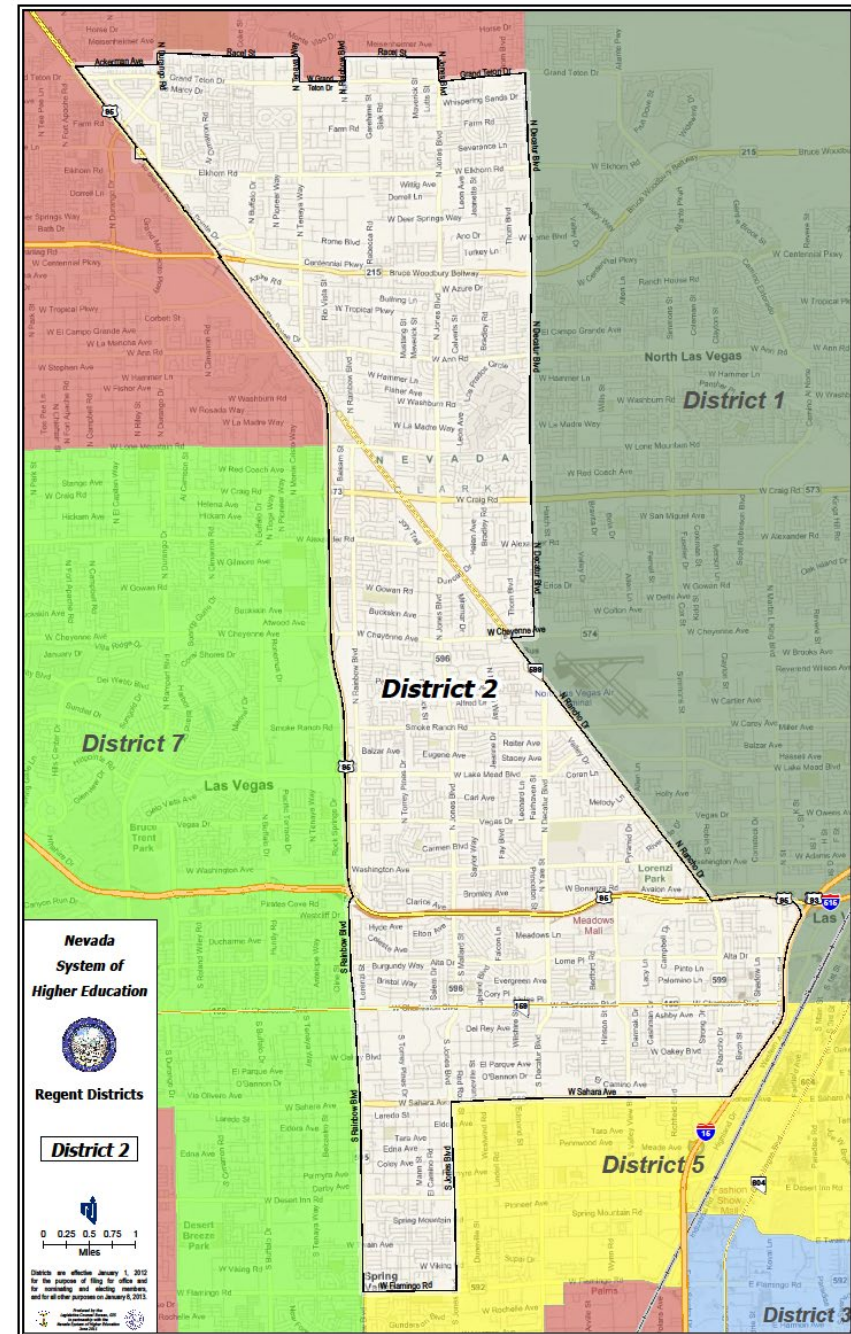
Clark County (part)



# Current Regent District 2

District 2 - Regent Tarkanian

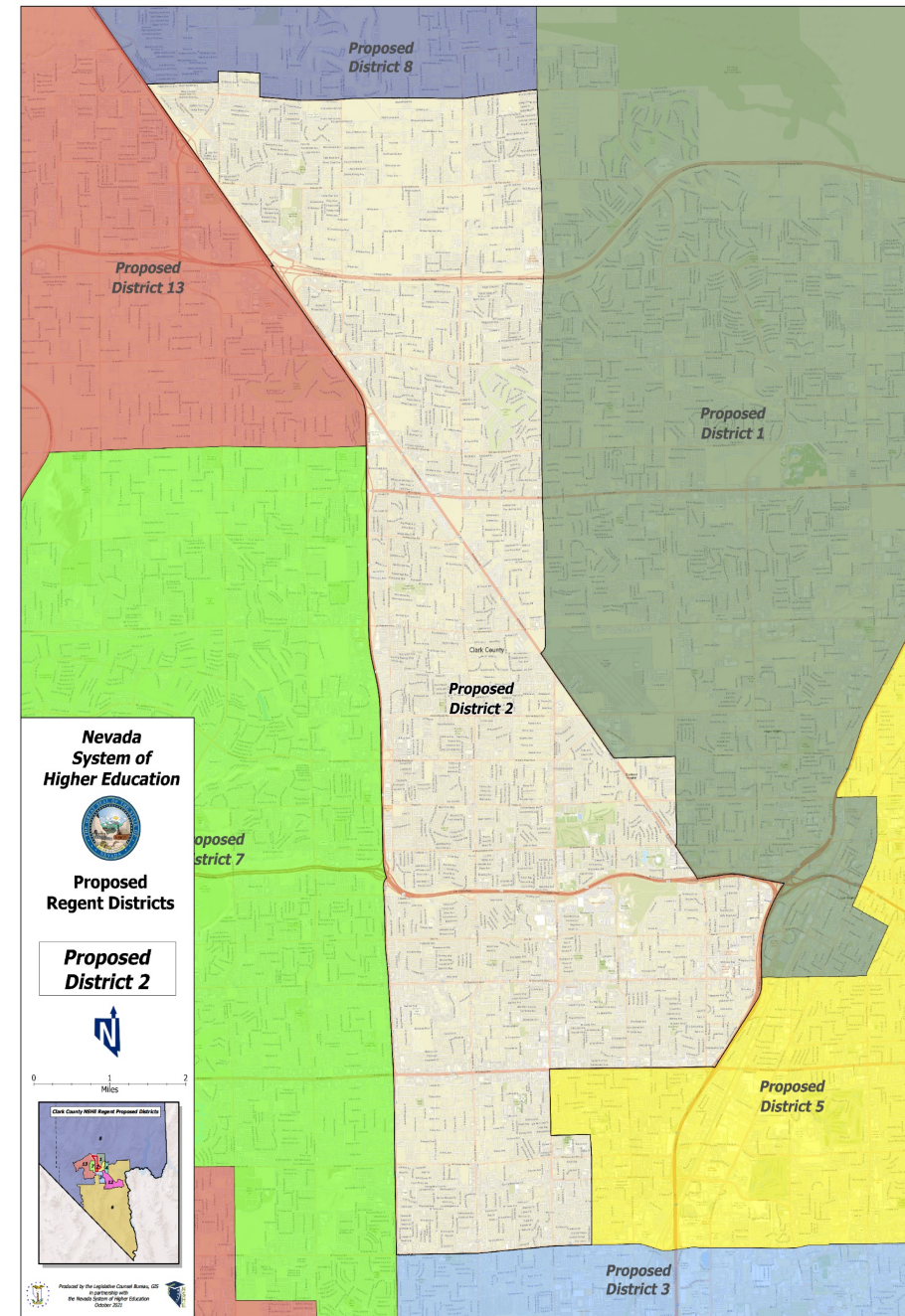
Clark County (part)



# Proposed District 2

District 2 - Regent Tarkanian

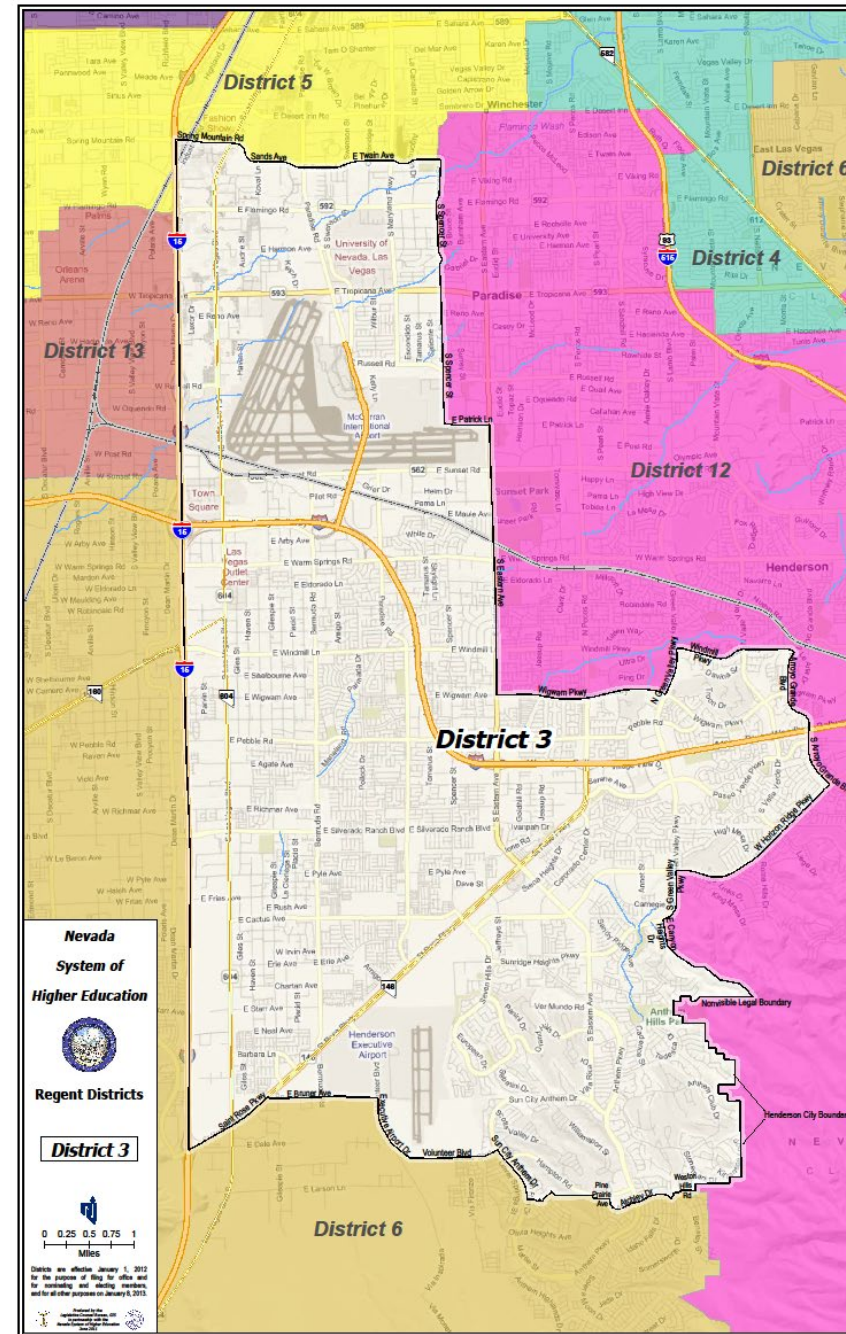
Clark County (part)



# Current Regent District 3

District 3 - Regent Brooks

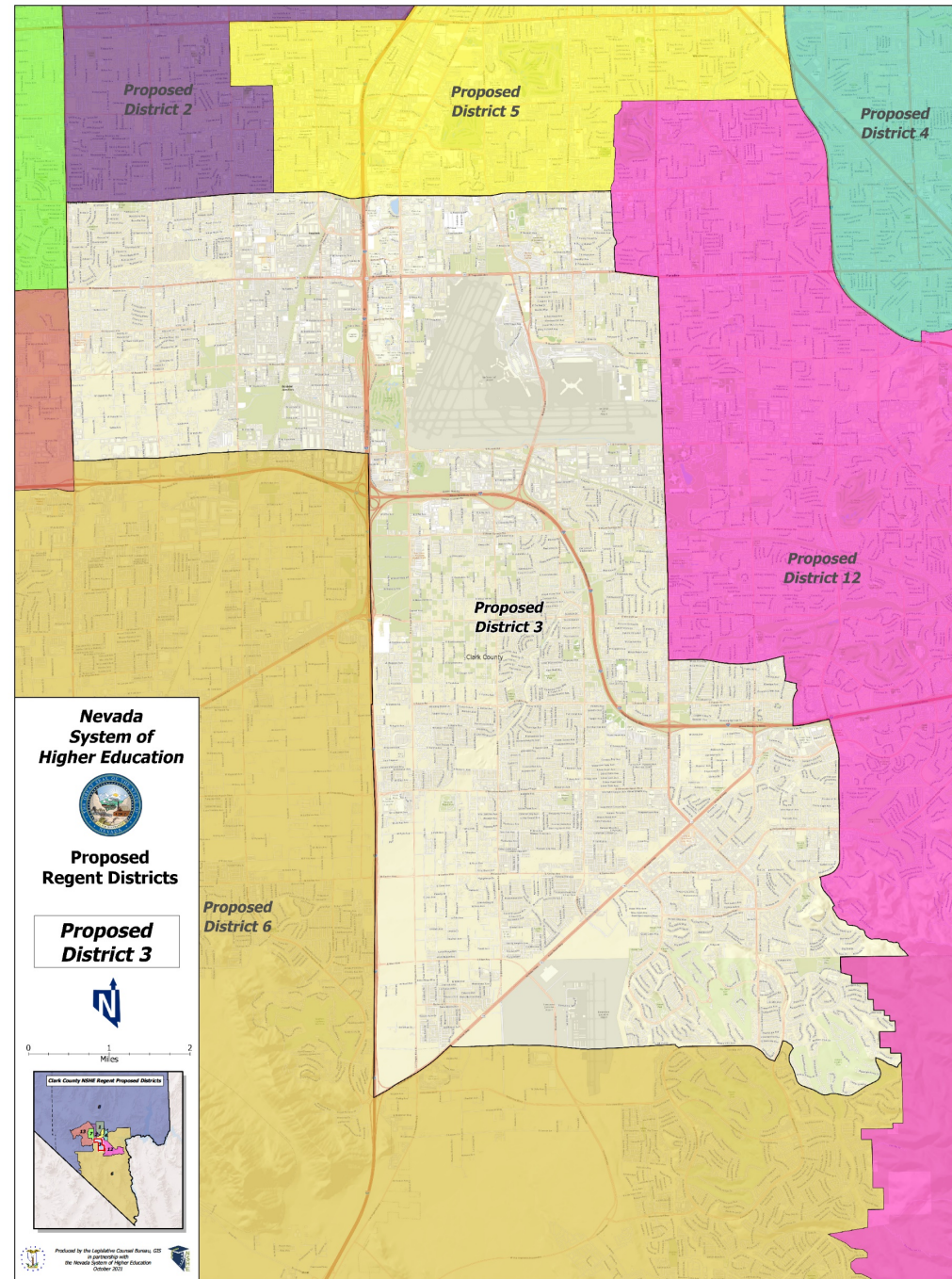
Clark County (part)



# Proposed District 3

District 3 - Regent Brooks

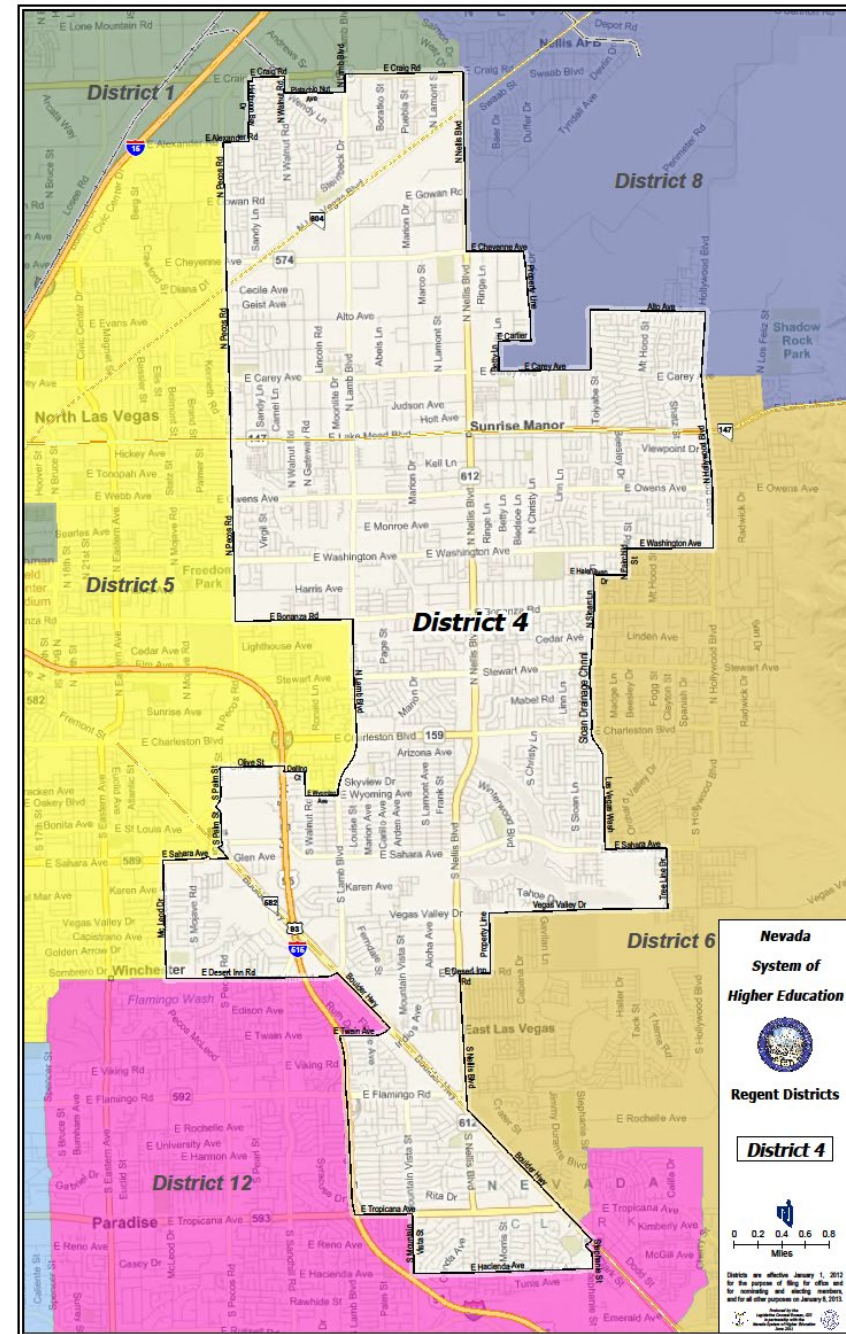
Clark County (part)



# Current Regent District 4

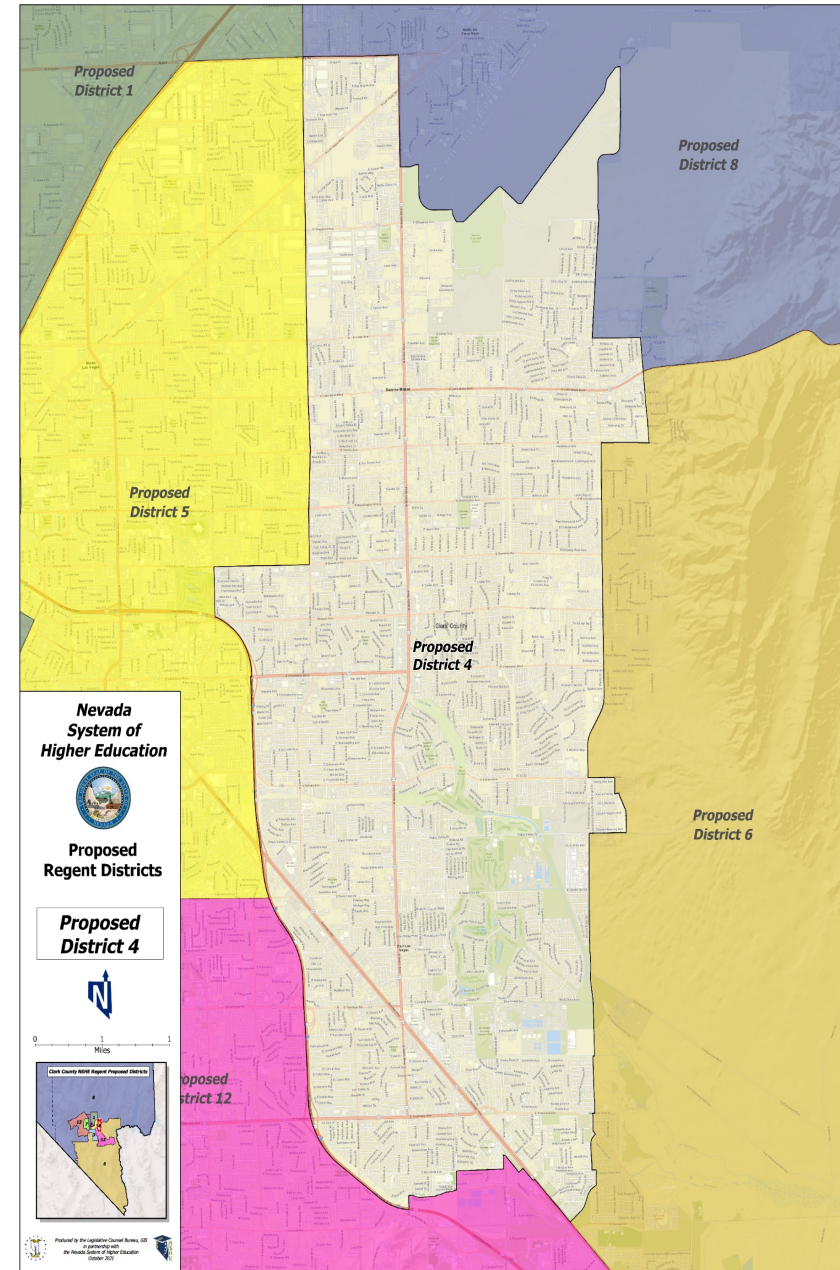
District 4 - Regent McMichael

Clark County (part)



# Proposed District 4

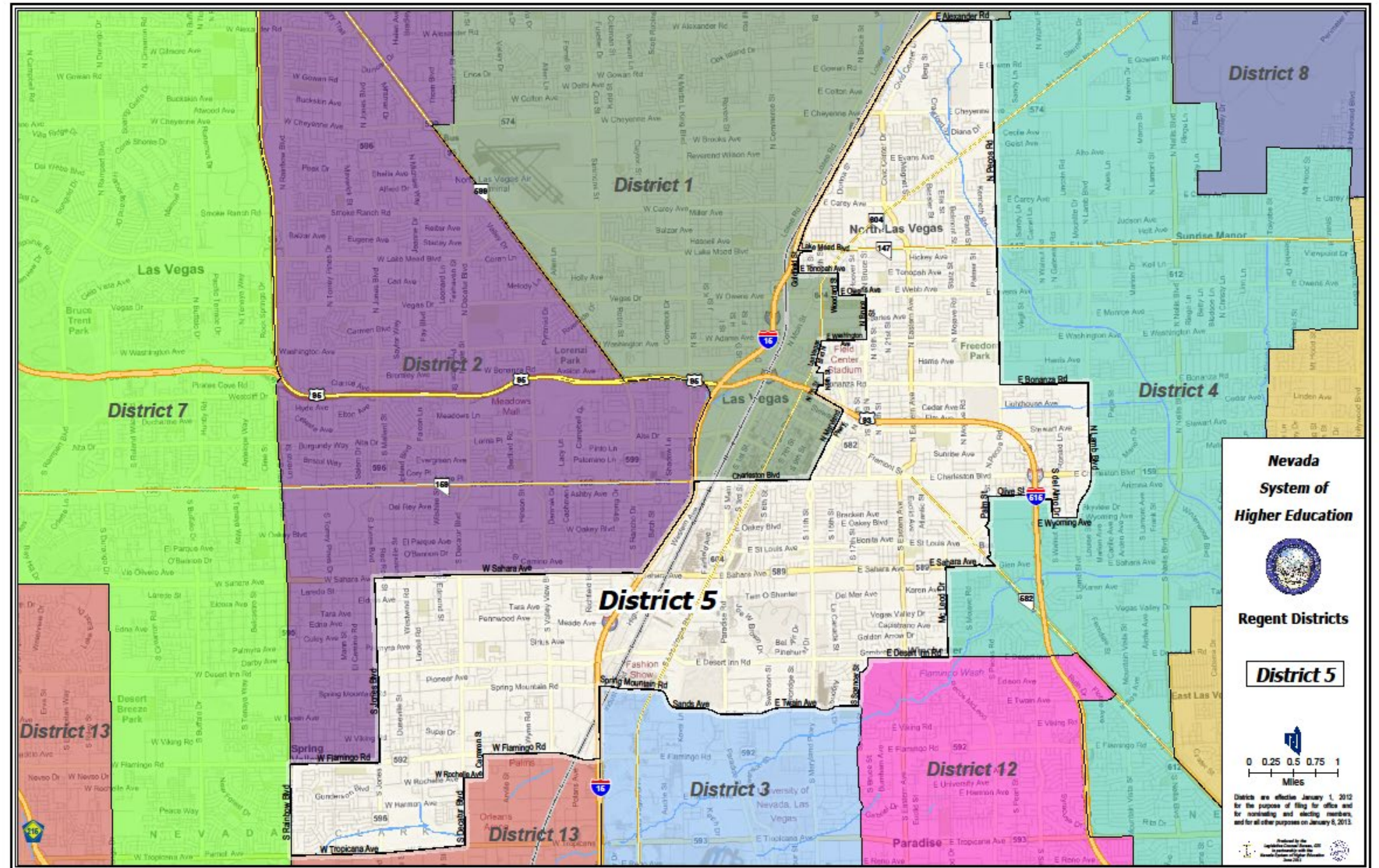
District 4 - Regent McMichael  
Clark County (part)





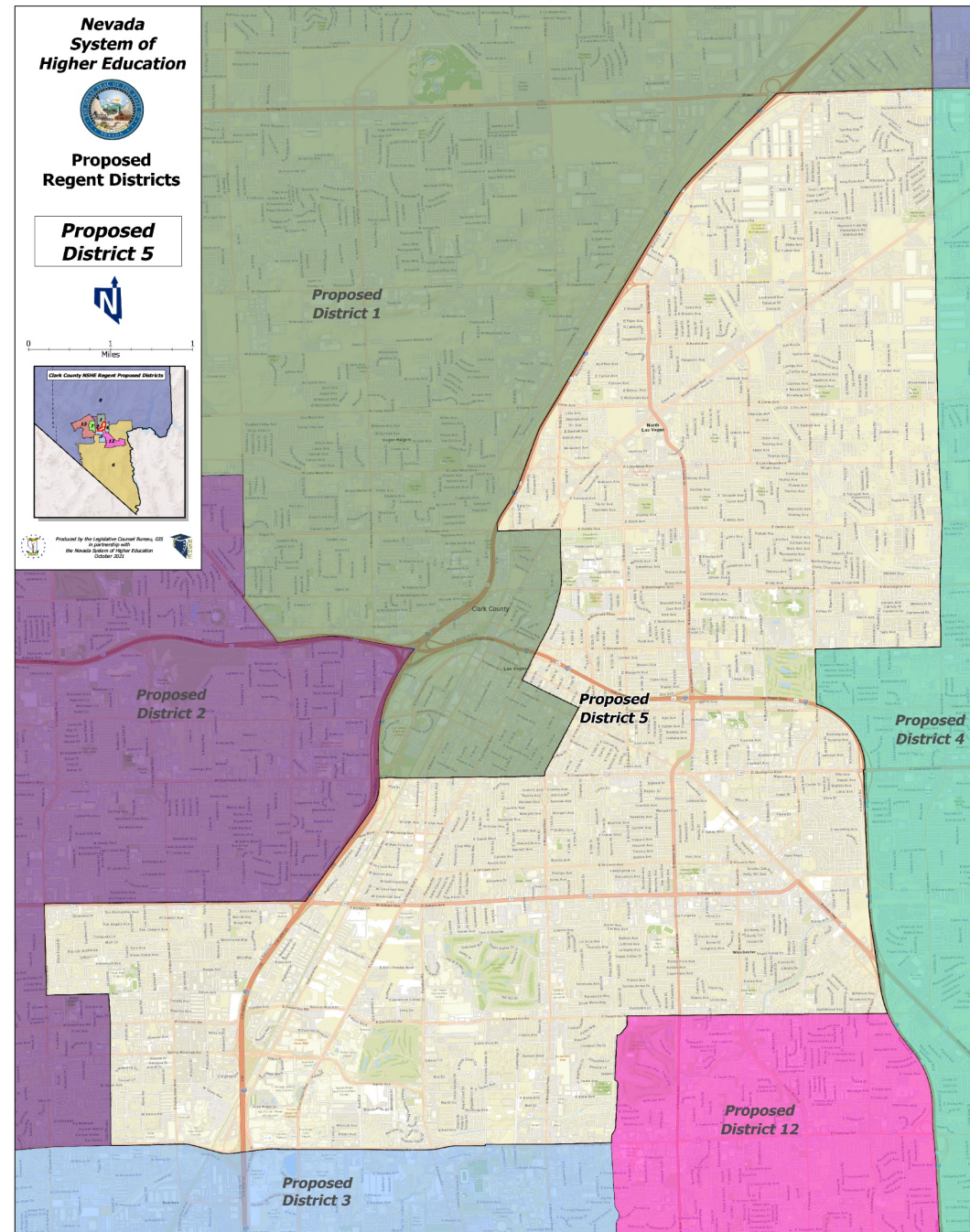
# Current Regent District 5

District 5 –  
Regent Boylan  
Clark County (part)



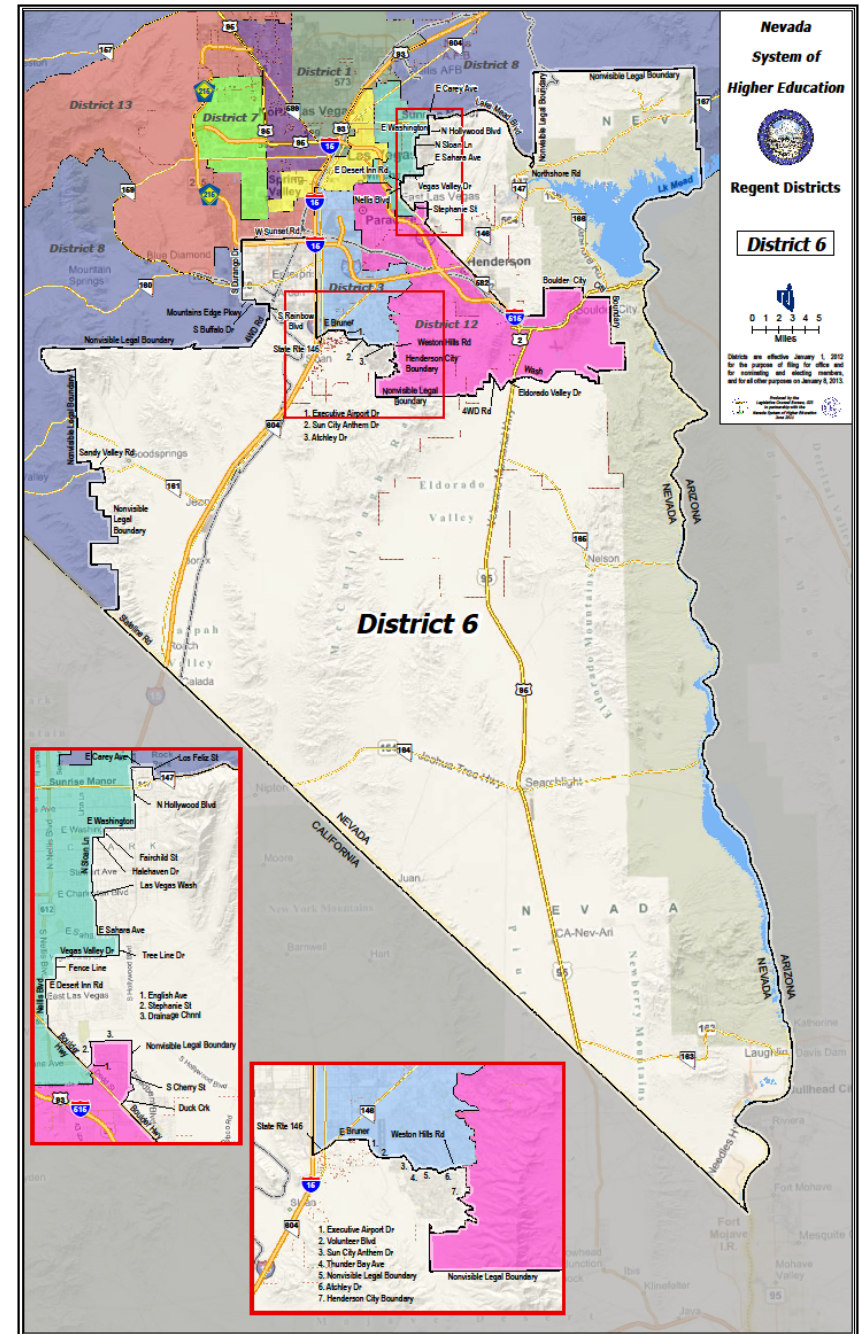
# Proposed District 5

District 5 –  
Regent Boylan  
Clark County (part)



# Current Regent District 6

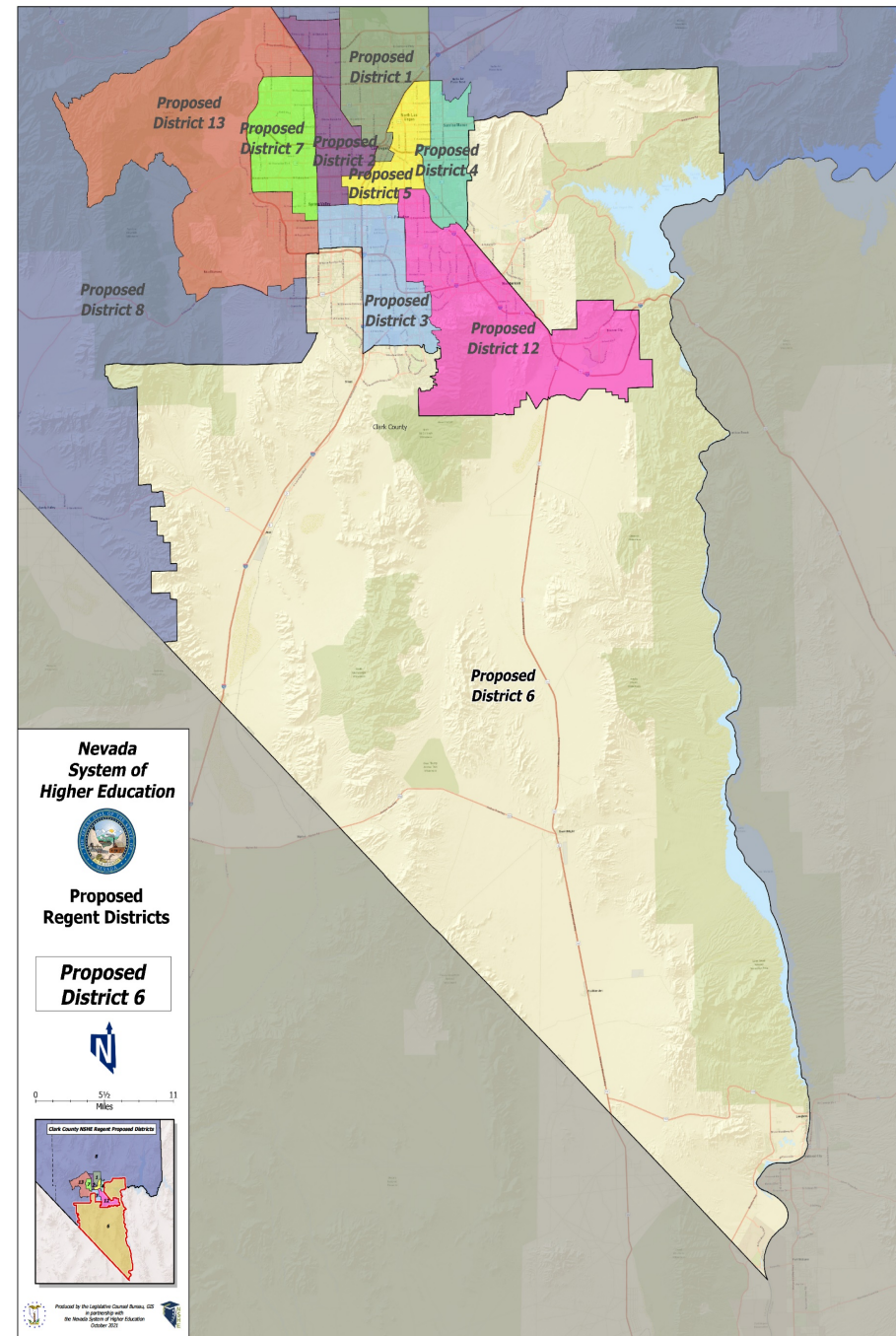
District 6 - Regent Carter  
Clark County (part)



# Proposed District 6

District 6 - Regent Carter

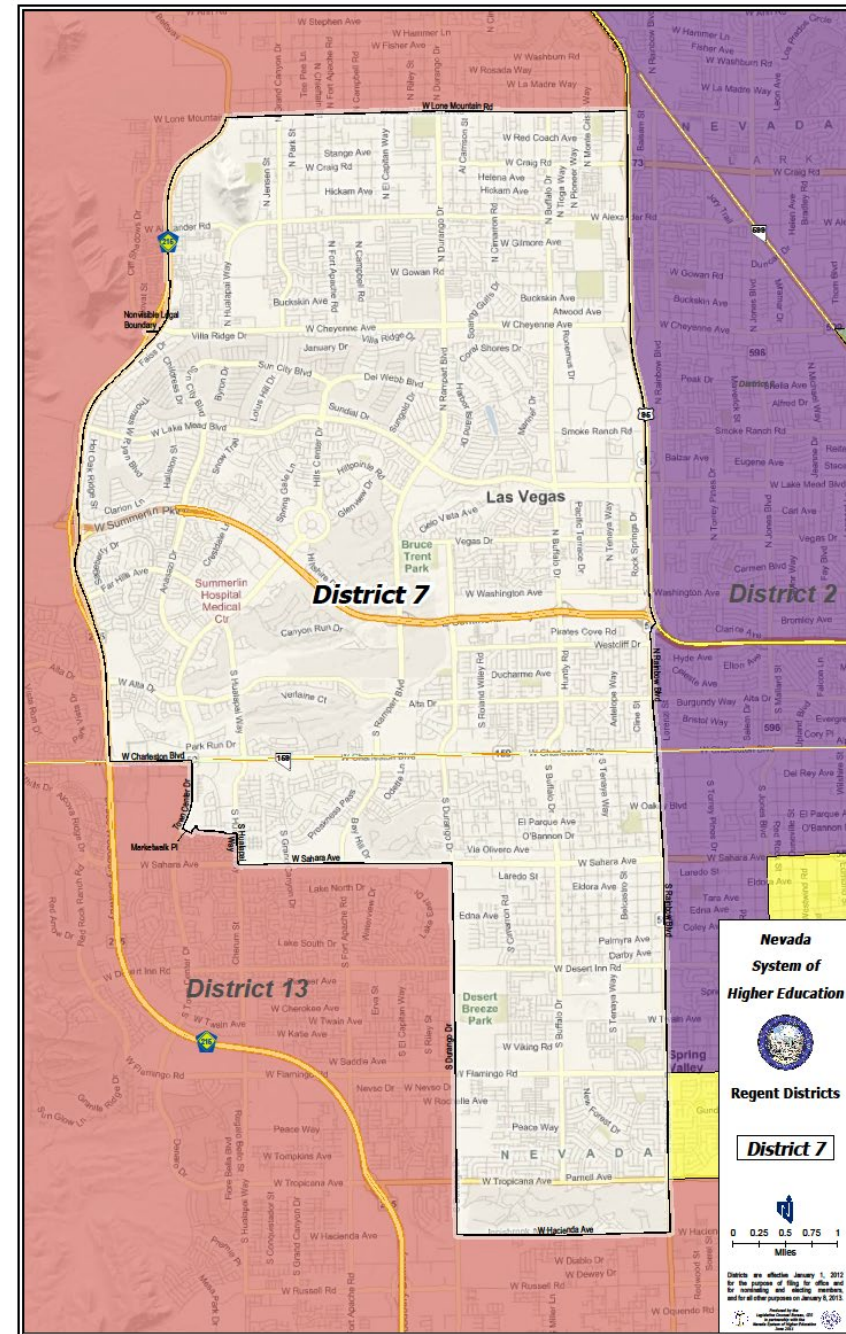
Clark County (part)



# Current Regent District 7

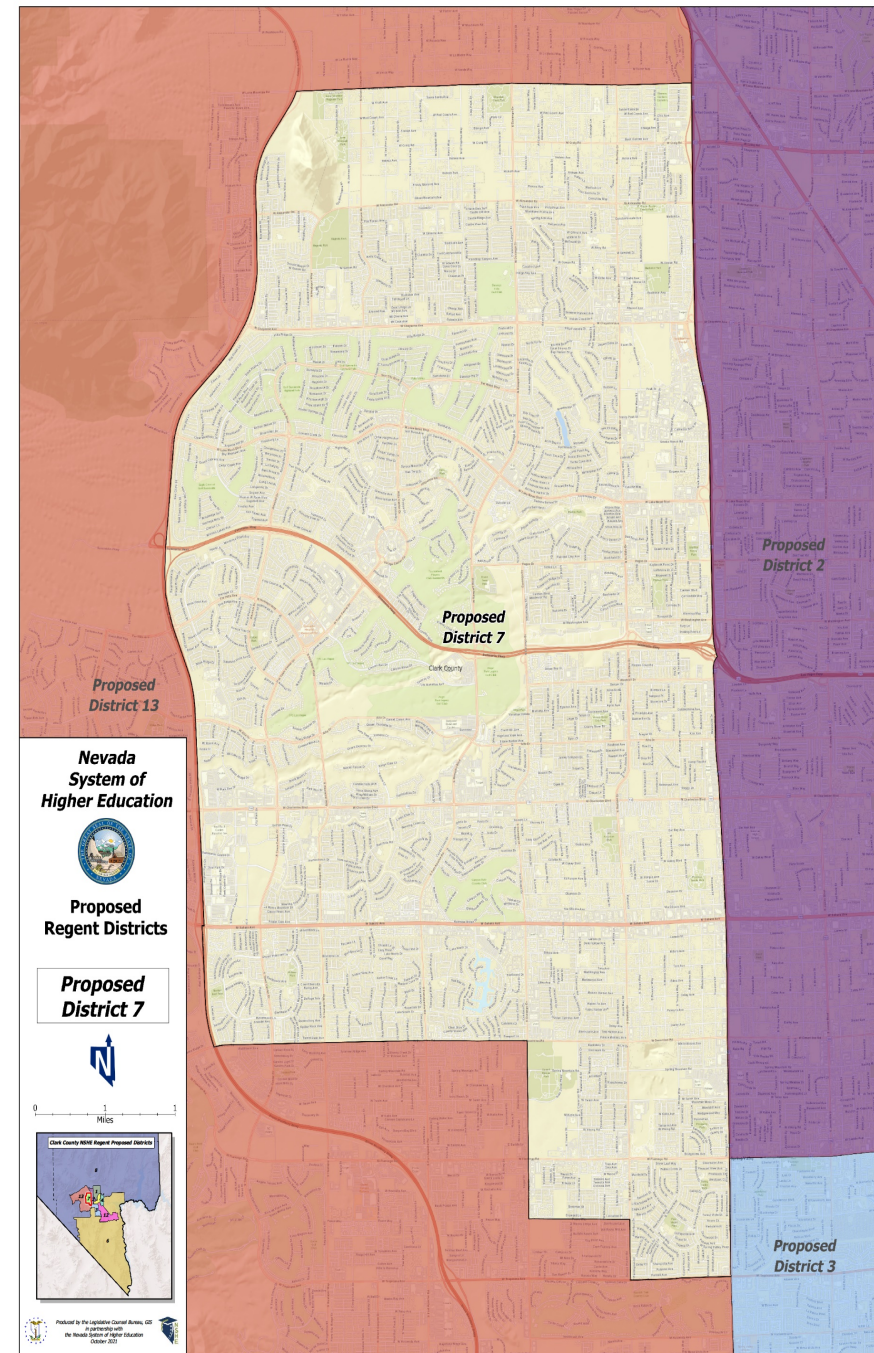
District 7 - Regent Doubrava

Clark County (part)



# Proposed District 7

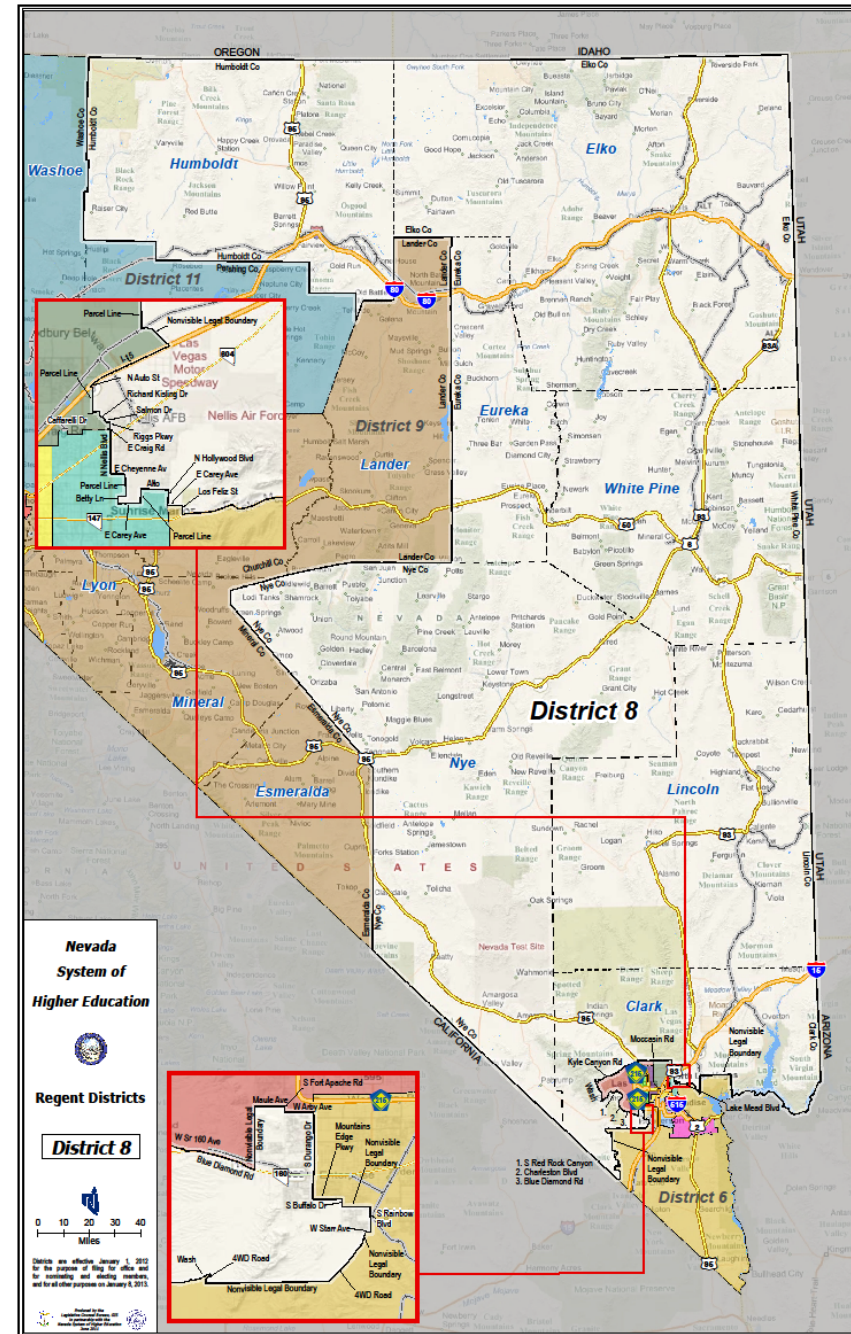
District 7 - Regent Doubrava  
Clark County (part)



# Current Regent District 8

District 8 - Regent McAdoo

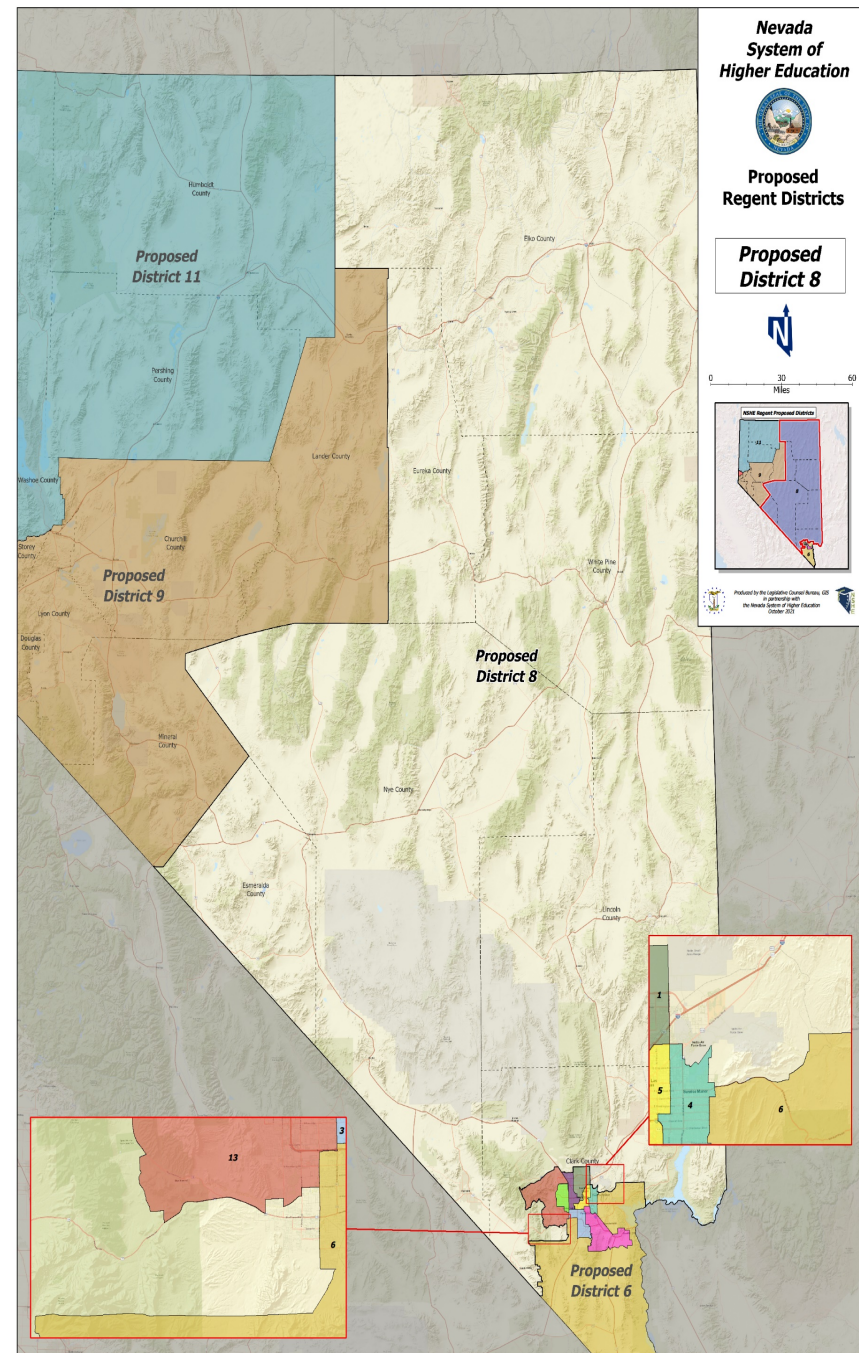
Clark (part), Elko, Eureka, Humboldt, Lincoln, Nye, White Pine Counties



# Proposed District 8

District 8 - Regent McAdoo

Clark (part), Elko, Esmeralda, Eureka, Lincoln, Nye, White Pine Counties

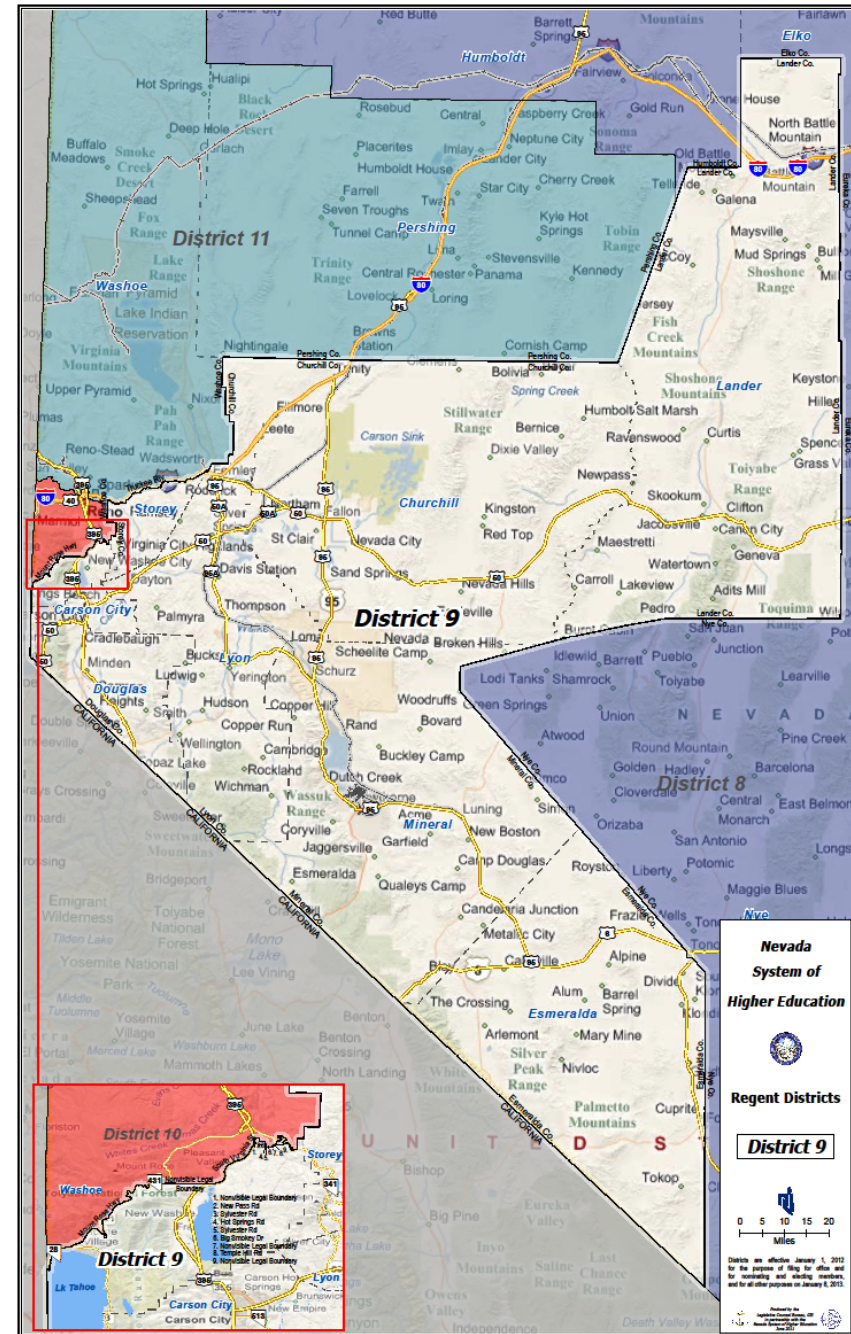




# Current Regent District 9

District 9 - Regent Del Carlo

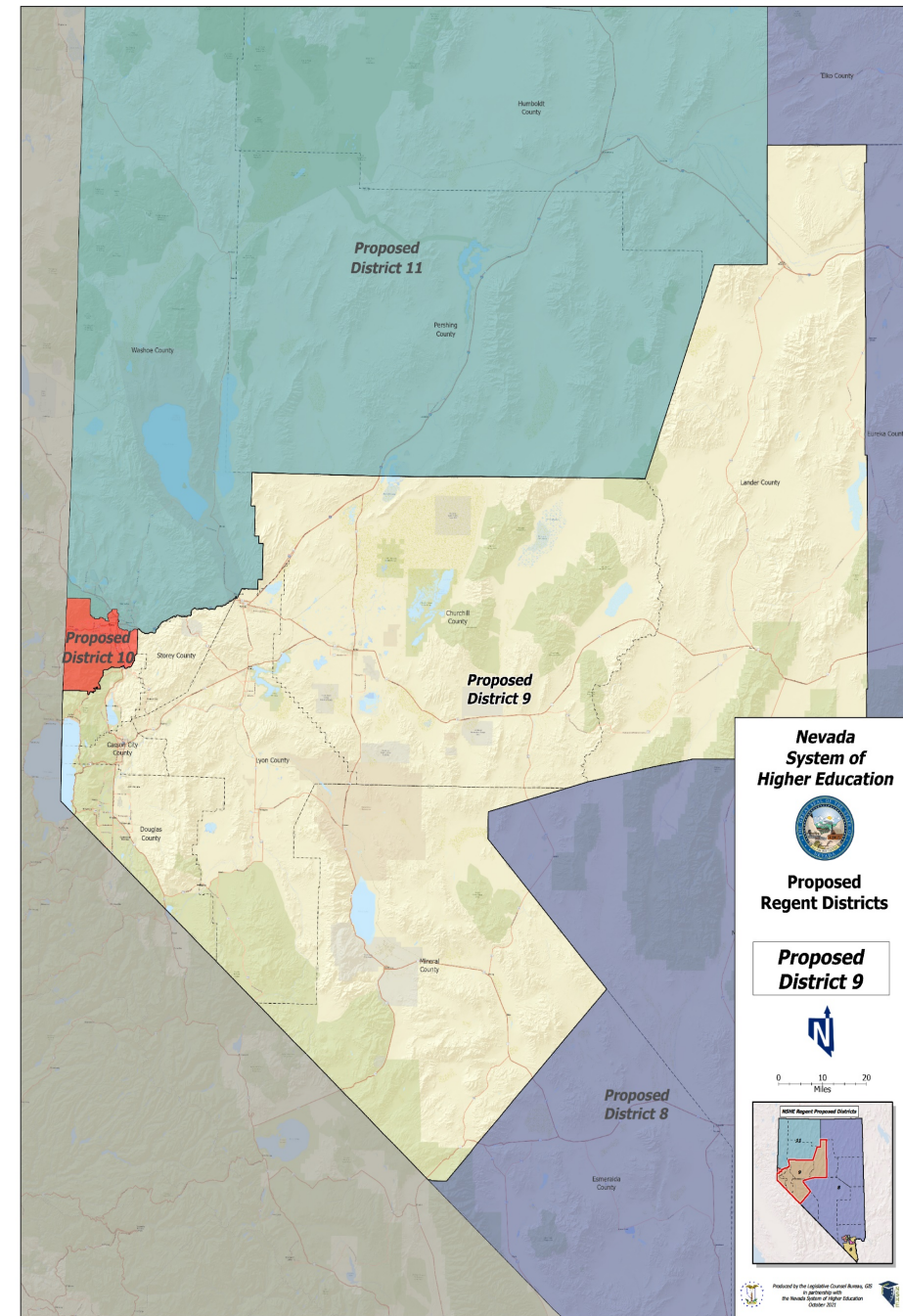
Carson City, Churchill, Douglas,  
Esmeralda, Lander, Lyon, Mineral, Storey,  
Washoe (part) Counties



# Proposed District 9

District 9 - Regent Del Carlo

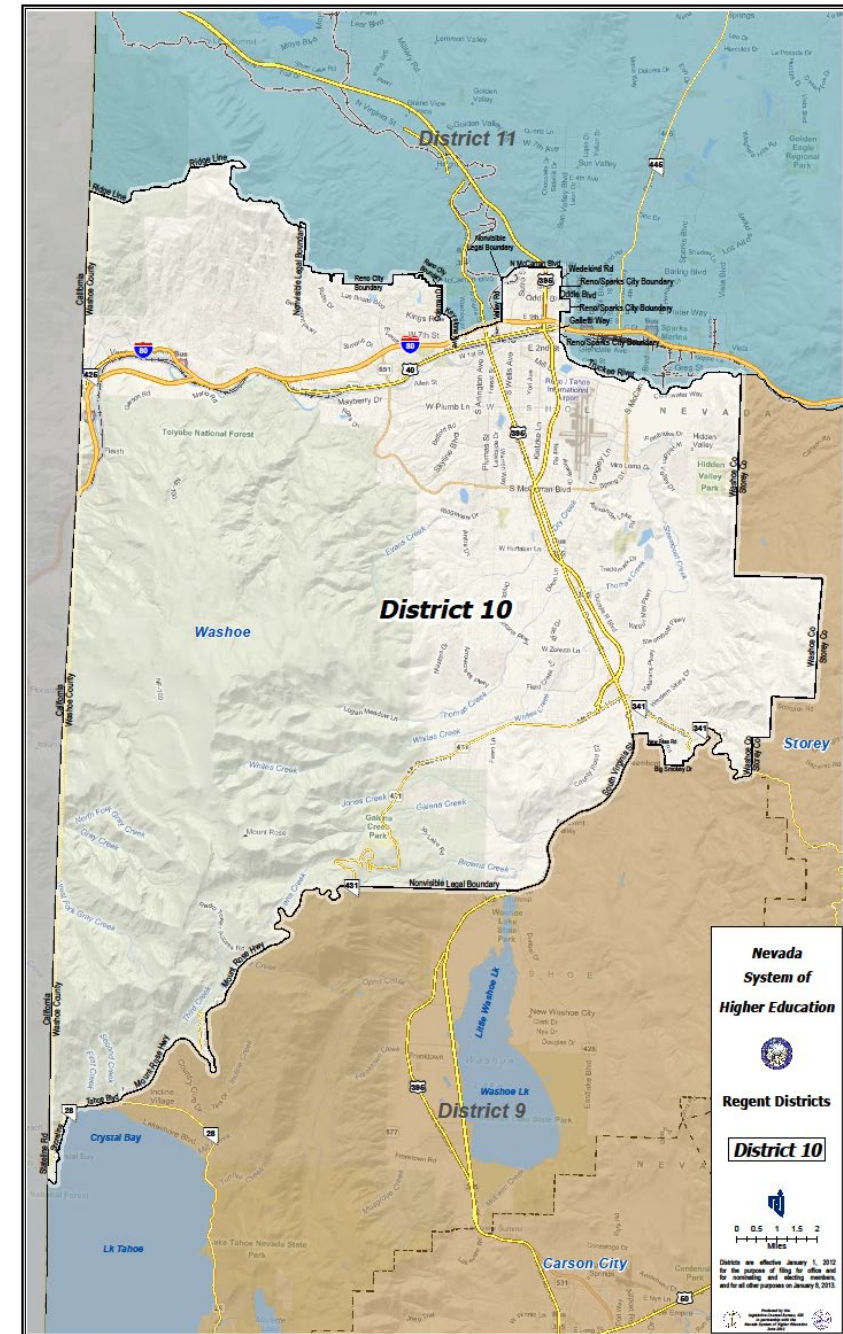
Carson City, Churchill, Douglas, Lander, Lyon, Mineral, Storey, Washoe (part) Counties



# Current Regent District 10

District 10 - Regent Arrascada

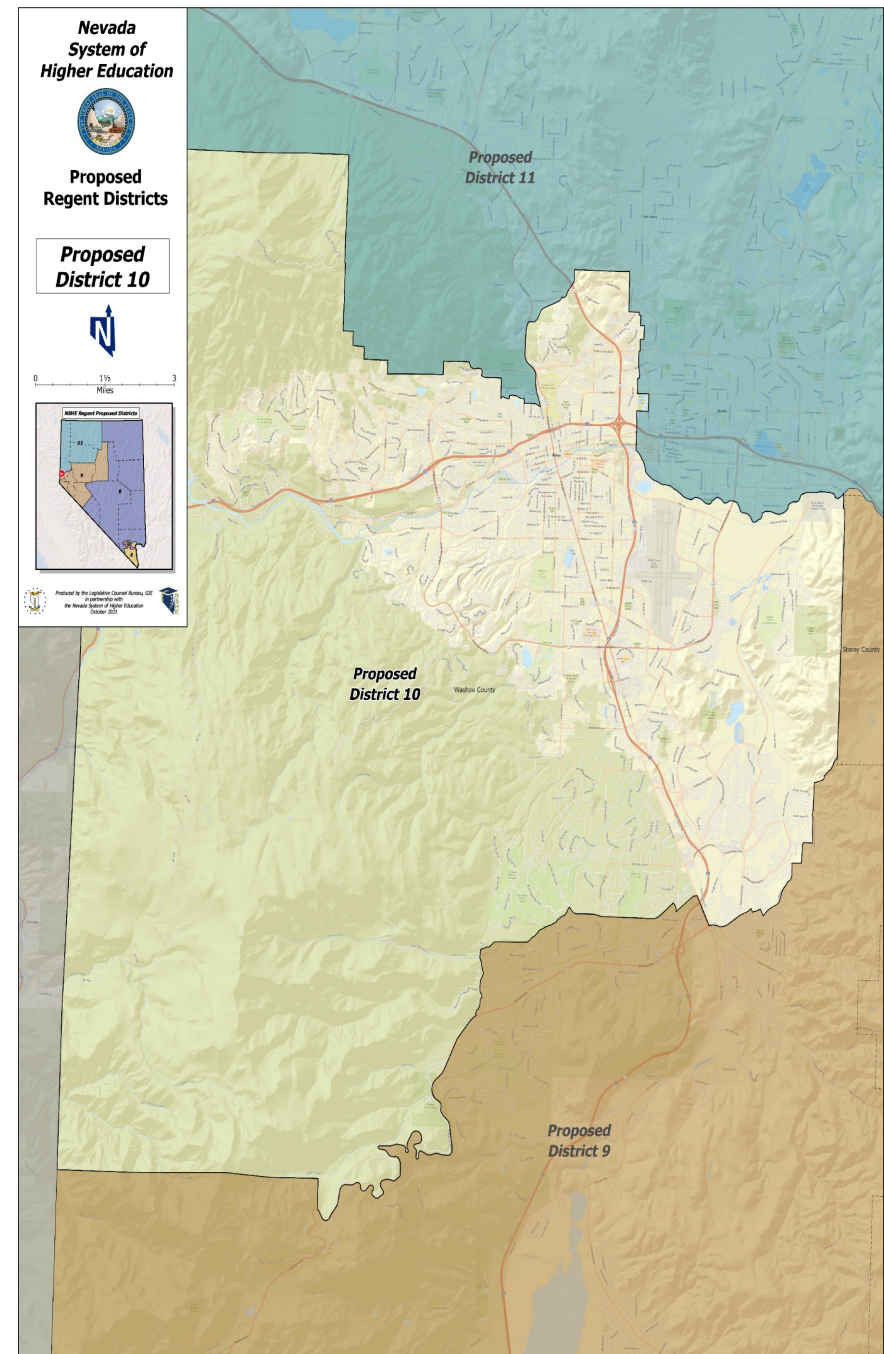
Washoe County (part)



# Proposed District 10

District 10 - Regent Arrascada

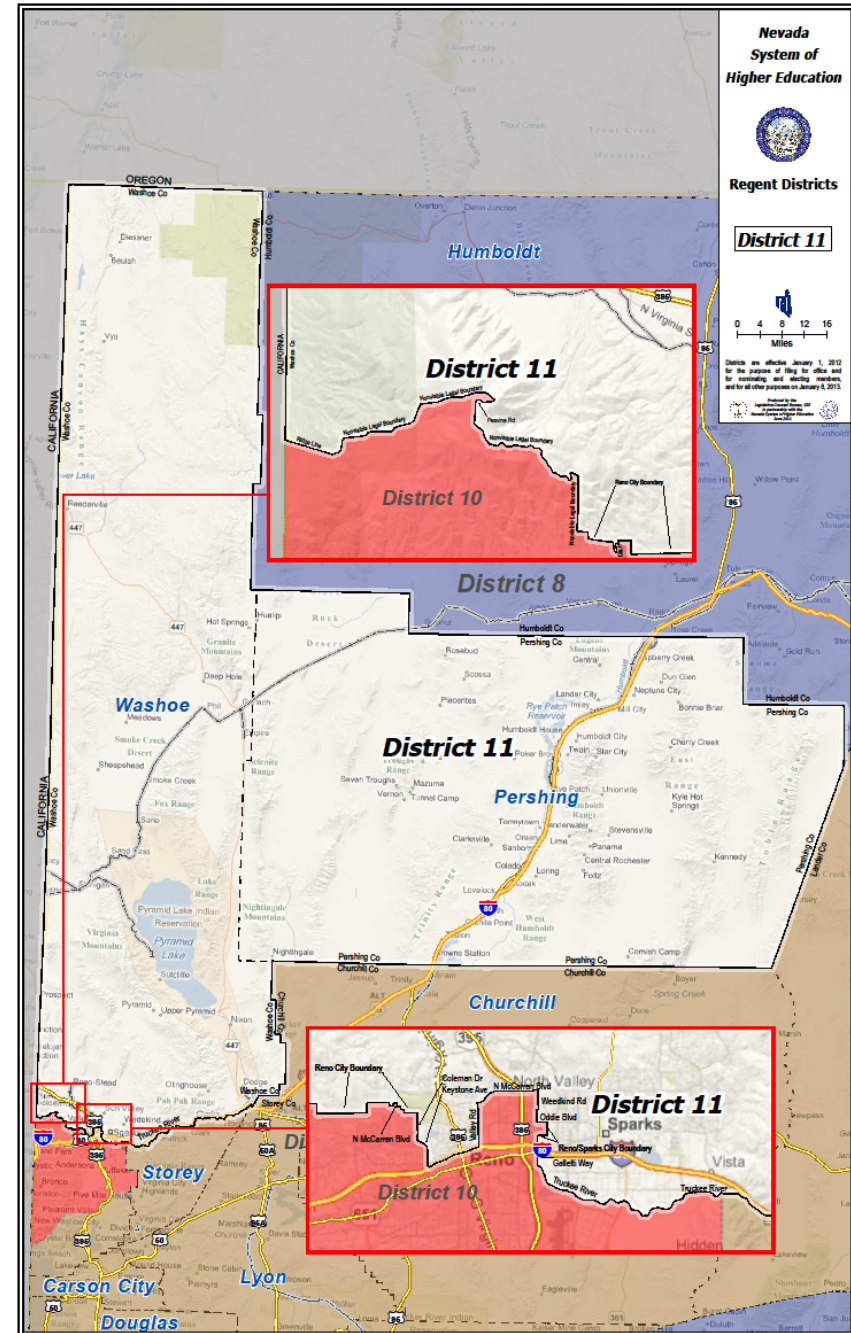
Washoe County (part)



# Current Regent District 11

District 11 - Regent Geddes

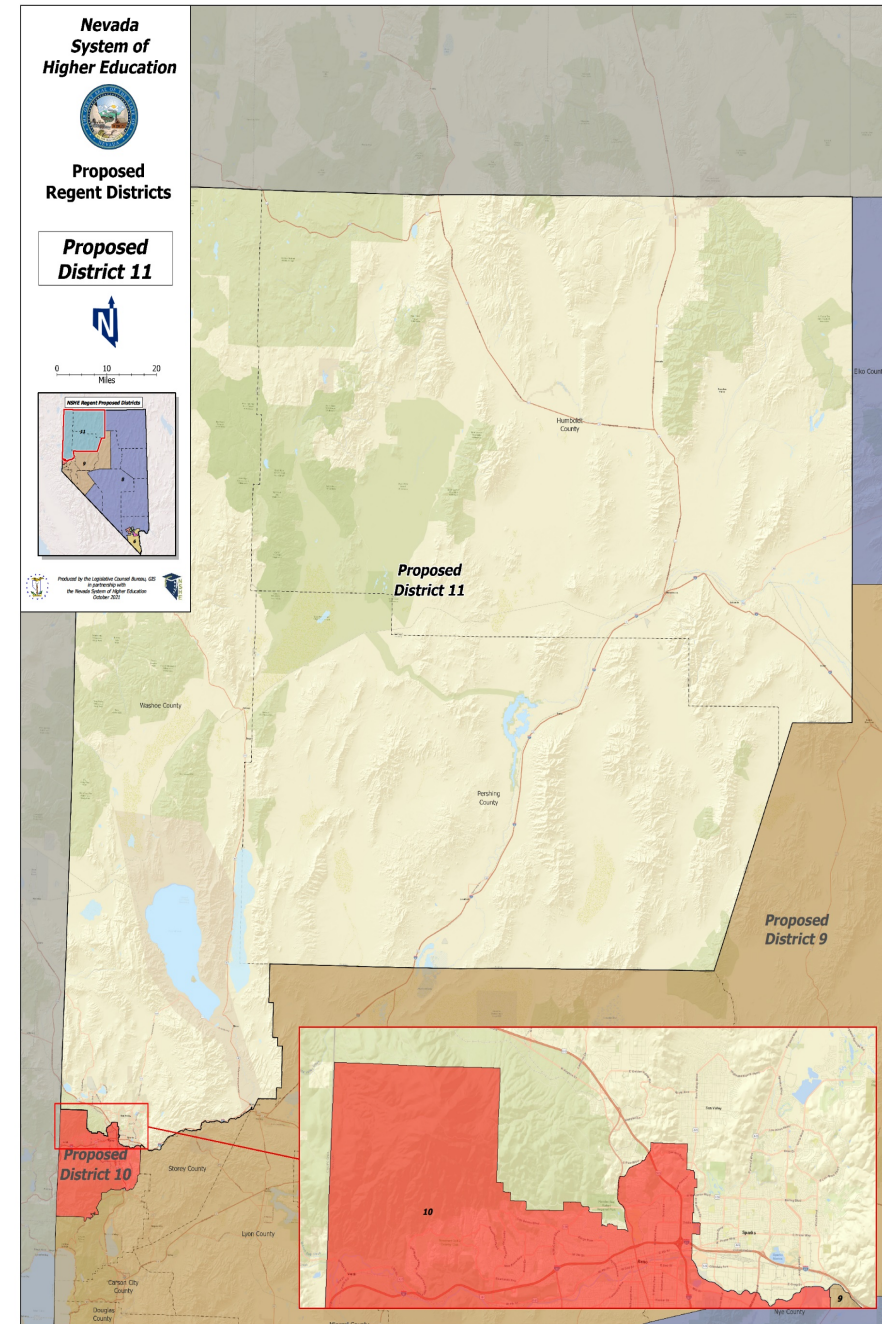
Pershing, Washoe (part) Counties



# Proposed District 11

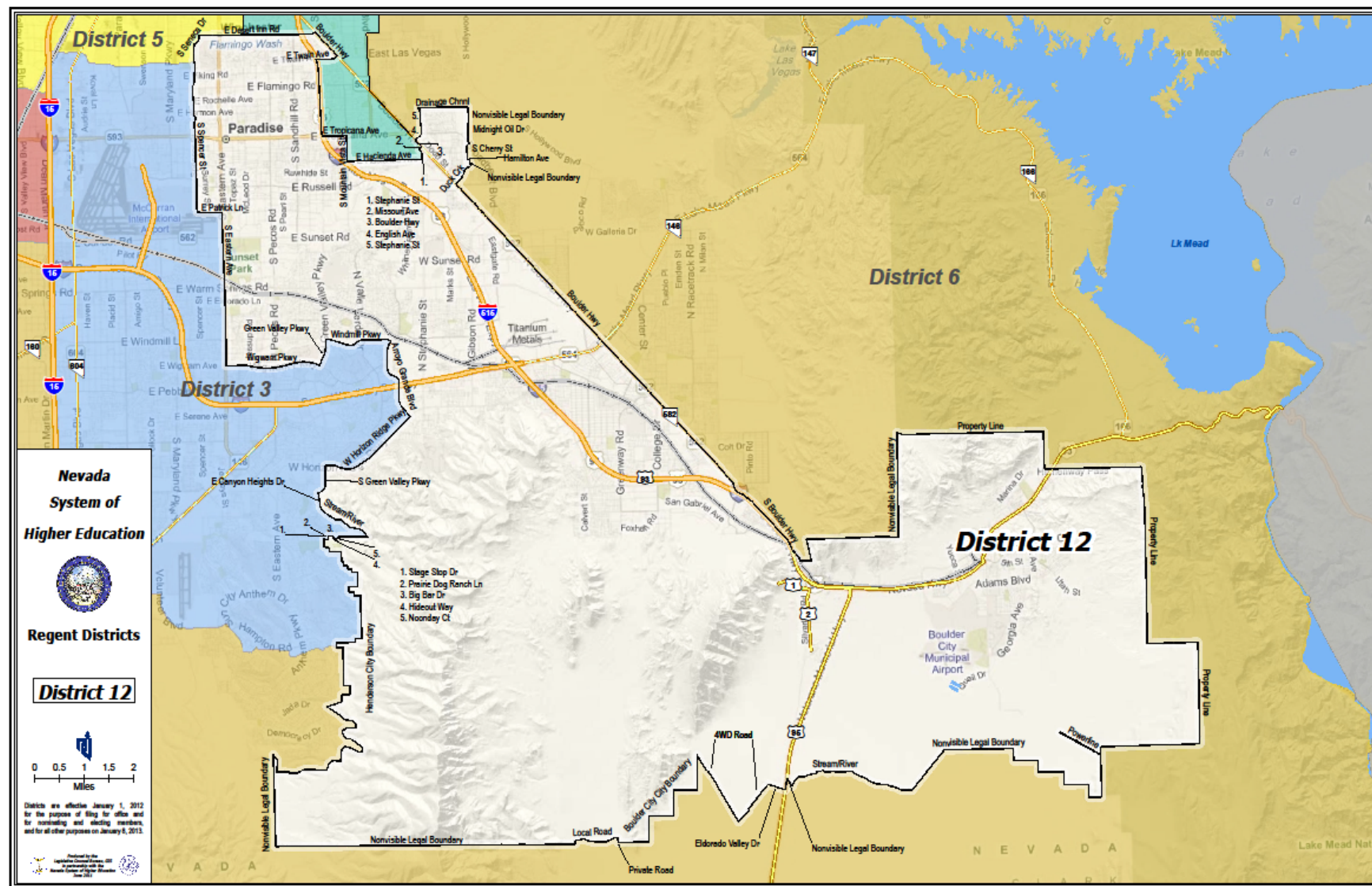
District 11 - Regent Geddes

Humboldt, Pershing, Washoe (part)  
Counties



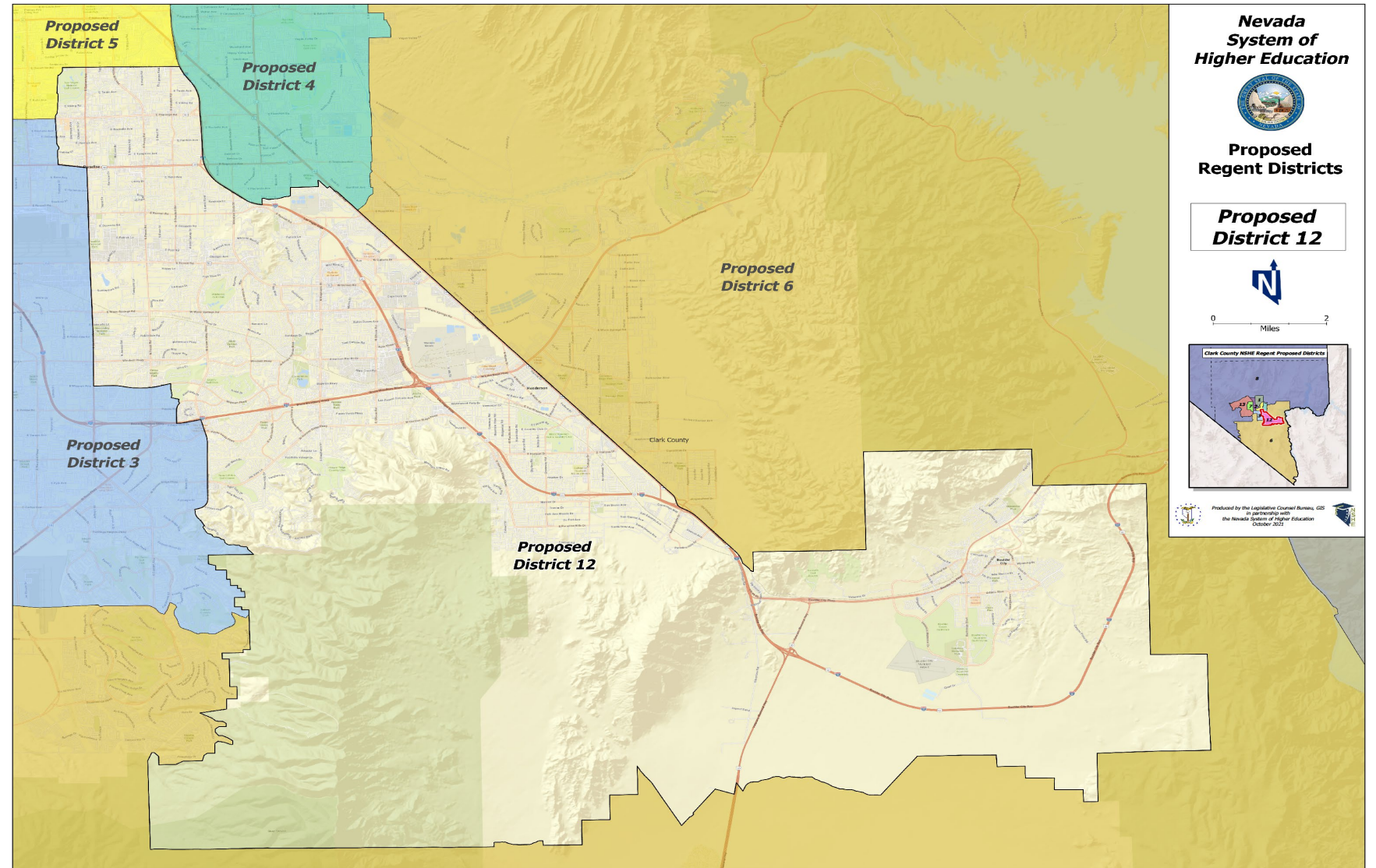
# Current Regent District 12

District 12 -  
Regent Carvalho  
Clark County (part)



# Proposed District 12

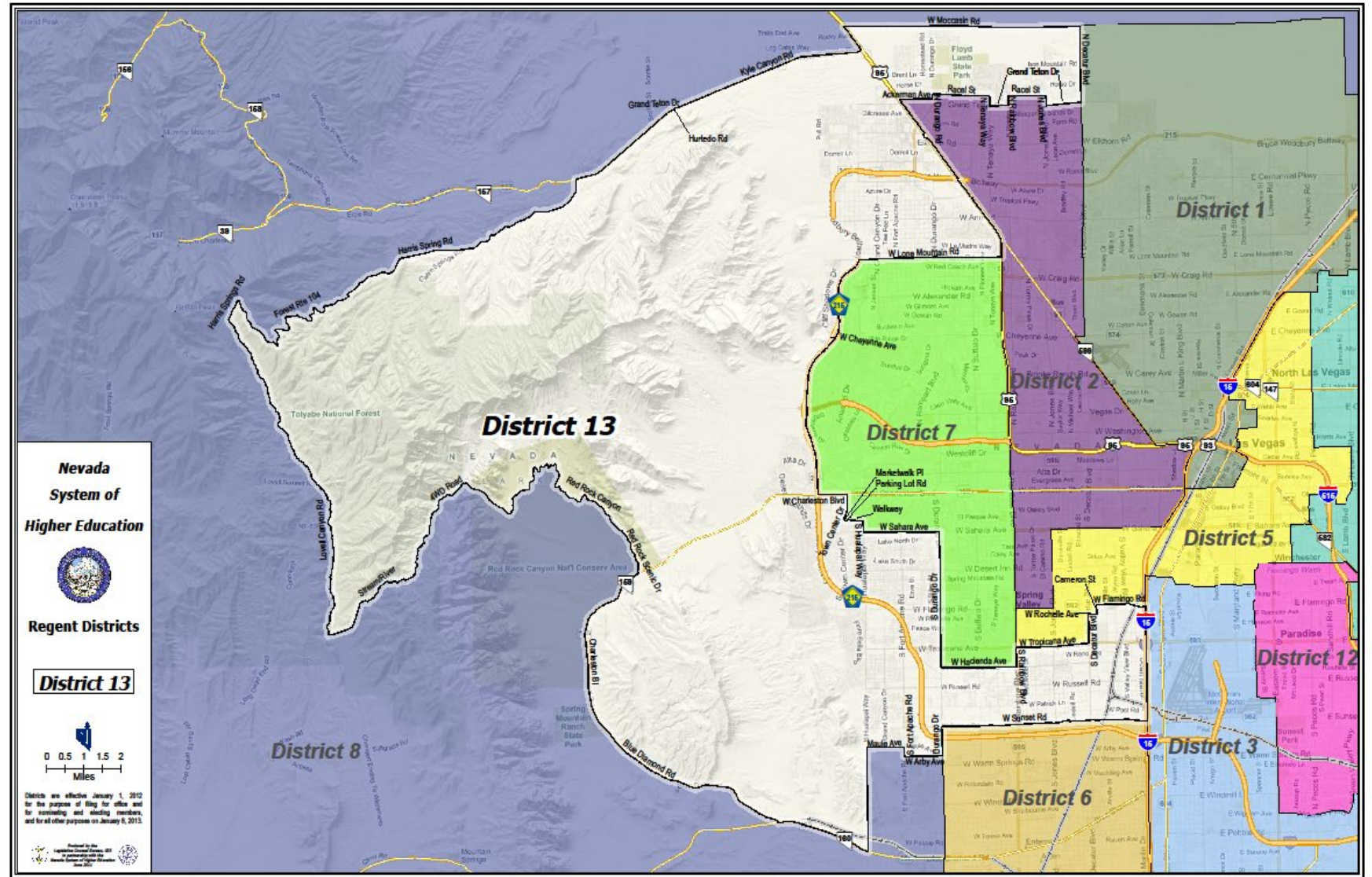
District 12 -  
Regent Carvalho  
Clark County (part)





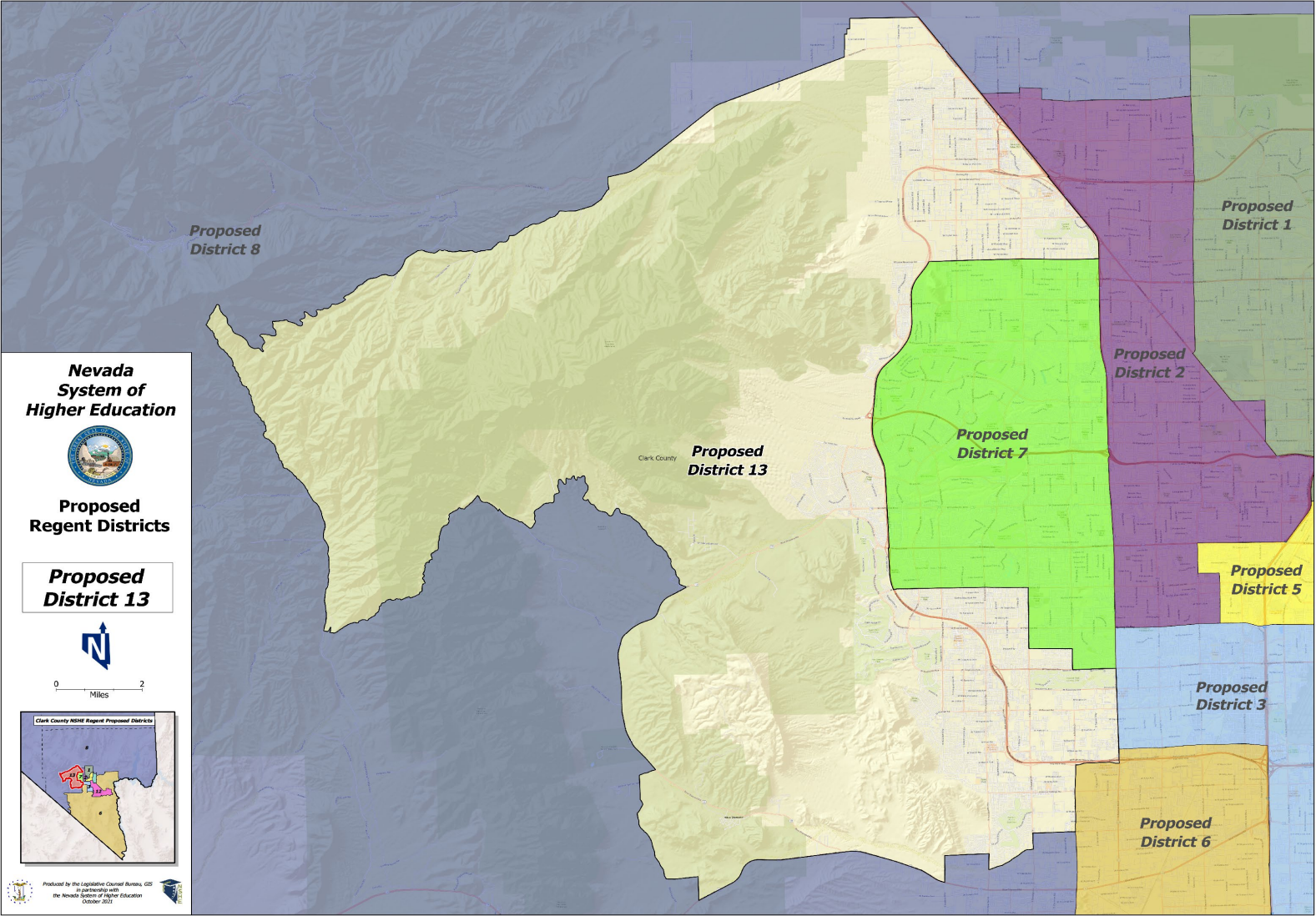
# Current Regent District 13

District 13 -  
Regent Moran  
Clark County (part)



# Proposed District 13

District 13 -  
Regent Moran  
Clark County (part)



# Population of Proposed Regent Districts

## 2020 Census population

as validated by LCB after inmate reallocation pursuant to AB450 (2019)

DISTRICT	Total Population Tabulation 2020 Census			
	All Persons	Target	Dev.	Difference
1	239,265	238,816	0.19%✓	449
2	238,314	238,816	-0.21%✓	-502
3	239,367	238,816	0.23%✓	551
4	238,750	238,816	-0.03%✓	-66
5	239,114	238,816	0.12%✓	298
6	238,218	238,816	-0.25%✓	-598
7	238,312	238,816	-0.21%✓	-504
8	238,678	238,816	-0.06%✓	-138
9	238,691	238,816	-0.05%✓	-125
10	239,302	238,816	0.20%✓	486
11	239,074	238,816	0.11%✓	258
12	239,263	238,816	0.19%✓	447
13	238,266	238,816	-0.23%✓	-550
Assigned	3104614			
Total Pop	3104614			
Unassigned	0			

After proposed redistricting:  
**Overall Population Deviation less than ½ of 1%**

# Proposed Regent Districts 2020 Census Racial Demographics Tabulation

\*2020 Census as validated by LCB after inmate reallocation pursuant to AB450 (2019)

DISTRICT	2020		White alone		Black Combined		AI/AN Combined		Asian Combined		NHOPI Combined		Some Other Race aln		Two or More Races		Total		Hispanic or Latino	
	Total Population	Population	% of Total	Population	% of Total	Population	% of Total	Population	% of Total	Population	% of Total	Population	% of Total	Population	% of Total	Population	% of Total	Minority	% Minority	Population
1	239,265	76,776	32.09%	69,542	29.06%	6,870	2.87%	24,351	10.18%	5,296	2.21%	40,695	17.01%	37,428	15.64%	162,489	67.91%	80,673	33.72%	
2	238,314	101,875	42.75%	37,885	15.90%	7,710	3.24%	21,603	9.06%	4,228	1.77%	46,600	19.55%	36,894	15.48%	136,439	57.25%	88,387	37.09%	
3	239,367	113,421	47.38%	33,590	14.03%	6,314	2.64%	42,142	17.61%	6,993	2.92%	25,848	10.80%	33,937	14.18%	125,946	52.62%	57,553	24.04%	
4	238,750	70,518	29.54%	36,946	15.47%	8,153	3.41%	19,606	8.21%	3,531	1.48%	72,467	30.35%	42,581	17.83%	168,232	70.46%	129,755	54.35%	
5	239,114	60,192	25.17%	44,964	18.80%	7,877	3.29%	15,226	6.37%	2,756	1.15%	81,474	34.07%	39,684	16.60%	178,922	74.83%	135,805	56.80%	
6	238,218	123,280	51.75%	26,443	11.10%	6,035	2.53%	51,474	21.61%	5,326	2.24%	16,472	6.91%	31,207	13.10%	114,938	48.25%	44,131	18.53%	
7	238,312	132,950	55.79%	28,433	11.93%	5,851	2.46%	35,089	14.72%	3,863	1.62%	20,087	8.43%	30,657	12.86%	105,362	44.21%	48,343	20.29%	
8	238,678	158,205	66.28%	19,328	8.10%	10,731	4.50%	19,818	8.30%	3,369	1.41%	20,605	8.63%	27,480	11.51%	80,473	33.72%	47,362	19.84%	
9	238,691	180,380	75.57%	5,055	2.12%	13,318	5.58%	8,828	3.70%	1,742	0.73%	17,149	7.18%	26,947	11.29%	58,311	24.43%	40,511	16.97%	
10	239,302	155,578	65.01%	10,325	4.31%	8,198	3.43%	22,565	9.43%	2,956	1.24%	25,153	10.51%	29,575	12.36%	83,724	34.99%	54,409	22.74%	
11	239,074	146,728	61.37%	8,661	3.62%	12,478	5.22%	15,816	6.62%	3,326	1.39%	34,675	14.50%	32,814	13.73%	92,346	38.63%	70,334	29.42%	
12	239,263	144,873	60.55%	23,756	9.93%	6,944	2.90%	25,829	10.80%	4,418	1.85%	20,257	8.47%	33,324	13.93%	94,390	39.45%	52,388	21.90%	
13	238,266	123,687	51.91%	30,270	12.70%	5,311	2.23%	51,246	21.51%	4,728	1.98%	14,275	5.99%	31,481	13.21%	114,579	48.09%	40,606	17.04%	

# Proposed Regent Districts 2020 Census Voting Age Racial Demographics Tabulation

\*2020 Census as validated by LCB after inmate reallocation pursuant to AB450 (2019)

DISTRICT	2020 18+	White alone		Black Combined		AI/AN Combined		Asian Combined		NHOPI Combined		Some Other Race aln		Two or More Races		Total		Hispanic or Latino	
	Total Population	Population	% of Total	Population	% of Total	Population	% of Total	Population	% of Total	Population	% of Total	Population	% of Total	Population	% of Total	Minority	% Minority	Population	% of Total
1	177,012	61,810	34.92%	48,895	27.62%	5,001	2.83%	18,388	10.39%	3,535	2.00%	28,345	16.01%	23,716	13.40%	115,202	65.08%	53,915	30.46%
2	183,021	84,748	46.31%	26,687	14.58%	5,835	3.19%	17,030	9.30%	2,836	1.55%	32,785	17.91%	24,666	13.48%	98,273	53.69%	60,621	33.12%
3	192,100	95,981	49.96%	24,726	12.87%	4,821	2.51%	33,167	17.27%	4,703	2.45%	19,589	10.20%	23,193	12.07%	96,119	50.04%	41,595	21.65%
4	174,059	56,947	32.72%	24,410	14.02%	5,964	3.43%	15,611	8.97%	2,389	1.37%	49,430	28.40%	28,897	16.60%	117,112	67.28%	87,416	50.22%
5	175,997	50,097	28.46%	31,918	18.14%	5,885	3.34%	12,415	7.05%	1,766	1.00%	55,582	31.58%	27,279	15.50%	125,900	71.54%	92,430	52.52%
6	186,632	101,981	54.64%	17,691	9.48%	4,492	2.41%	39,365	21.09%	3,471	1.86%	12,309	6.60%	19,814	10.62%	84,651	45.36%	30,241	16.20%
7	193,703	113,711	58.70%	20,534	10.60%	4,403	2.27%	28,005	14.46%	2,594	1.34%	15,147	7.82%	20,789	10.73%	79,992	41.30%	34,736	17.93%
8	187,035	126,045	67.39%	13,737	7.34%	7,615	4.07%	14,631	7.82%	2,070	1.11%	15,240	8.15%	17,067	9.13%	60,990	32.61%	31,655	16.92%
9	191,862	149,886	78.12%	3,397	1.77%	9,700	5.06%	6,341	3.30%	1,170	0.61%	12,197	6.36%	17,983	9.37%	41,976	21.88%	27,174	14.16%
10	192,930	131,736	68.28%	7,223	3.74%	6,278	3.25%	17,420	9.03%	2,007	1.04%	17,877	9.27%	20,156	10.45%	61,194	31.72%	37,806	19.60%
11	183,146	118,411	64.65%	5,712	3.12%	8,836	4.82%	11,892	6.49%	2,111	1.15%	23,942	13.07%	21,230	11.59%	64,735	35.35%	46,493	25.39%
12	191,127	120,655	63.13%	17,037	8.91%	5,315	2.78%	19,811	10.37%	3,097	1.62%	15,340	8.03%	22,502	11.77%	70,472	36.87%	37,272	19.50%
13	184,702	99,974	54.13%	20,863	11.30%	3,934	2.13%	39,250	21.25%	3,072	1.66%	10,803	5.85%	19,487	10.55%	84,728	45.87%	28,042	15.18%

# Proposal Complies with all Legal Requirements for Redistricting

---

- ▶ Districts have substantially equal population – overall population deviation of less than  $\frac{1}{2}$  of 1%.  
(Joint Rules - No district should have greater or less than 5% deviation from ideal district population.)
- ▶ Proposed plan complies with Section 2 of the Voting Rights Act.  
(The proposed plan is not discriminatory against any person or group of persons on account of race, color or status as a member of a language minority group.)
- ▶ Proposed plan has no racial gerrymandering.  
(Racial gerrymandering exists when race is the dominant and controlling rationale in drawing district lines and traditional race-neutral districting principles become subordinate to racial considerations.)

# Proposed Plan Follows All Traditional Redistricting Principles

---

- ▶ Contiguity
- ▶ Compactness
- ▶ Preservation of (counties and other) political subdivisions
- ▶ Preservation of communities of interest
- ▶ Preservation of cores of prior districts
- ▶ Avoiding pairing incumbents (continuation of representation)

# Proposal Complies with Joint Rules Previously Adopted

---

- ▶ Federal decennial census as validated by LCB was the exclusive database used for redistricting.
- ▶ All proposed district boundaries created by following census geography.
- ▶ Public participation and input was invited and encouraged in all aspects of the reapportionment and redistricting process; all reapportionment and redistricting activities were conducted by the Board of Regents at public meetings.
- ▶ No proposed district has greater or less than 5% deviation from the ideal district population.

(Overall population deviation of proposed plan less than ½ of 1%.)