



INTERAGENCY OVERVIEW OF THE 2005 FIRE SEASON

EXHIBIT M - LANDS
Document consists of 21 pages, plus cover.
Entire Exhibit Provided
Meeting Date: 11-15-05

Year to Date Wildfire Report

October 30, 2005



2005 Wildland Fire Summary

The winter season of 2005 set records for snow and total precipitation over much of Nevada. This slowed the fire season in the upper elevations and dramatically increased the potential in lower and mid-slope elevations. By late May, much of the lower and mid level vegetation in Southern Nevada was cured and in high fire danger. As the summer progresses this same potential for large fire occurrence moved north and west in Nevada. **Between June 22 and June 29, 32 lightning fires consumed 683,495 acres, which accounted for 66% of the total acres burned in Nevada in 2005.** Extreme fire behavior occurred on many fires and 50,000 acres and 6-8 mile fire runs were not uncommon on several fires in a 24 hour period.

Fuels and Conditions

Due to the wet winter and spring, there was record growth in perennial and annual grasses throughout much of Nevada. In Southern Nevada, many areas that traditionally have less than 500/lb/acre of fine fuels had 2,000-3000+ lb/acre. In Northern Nevada, record grass growth also occurred and statewide, this grass was often continuous and in the 18-24" range. This record growth exceeded that of 1999-2000 when a record number of acres were consumed by wildfire in Nevada. While the moisture provided some needed relief to drought conditions, much of the pinyon pine forest areas are still suffering from the effects of extended drought years and many stands have 35% to 55% mortality.

Nevada fine fuel loading remains high in many areas of the state and is of particular concern in the rural and urban interface areas of Nevada communities. If Nevada encounters a mild winter in 2005-2006, much of the dry dead light fuels may remain standing, thus adding to the fuel loading in the 2006 fire season.

Pre-Suppression Planning

Based on the known fuel conditions and season potential, all agencies increased their fire suppression forces. Additional agency and private forces were brought on, in advance of the peak fire season. During most of the fire season these "Severity" resources including aircraft, dozers, water tenders, engines and crews more than doubled the normal initial attack Wildland fire resources in Nevada.

Acres Burned

On a statewide, "all Agencies" basis, a total of **1,032,104** acres have burned during **794** fires since January 1, 2005. These numbers represent 85% of the 933 fires and 272% of the 379,330 acres burned by this date, on an average in the last 10 years. Of the 794 fires, 55 large fires of 300 acres or more occurred throughout Nevada, which is an increase of 125% from the 10 year average of 44 large fires (94% of the fires starts were caught at initial attack).

Nevada Division of Forestry

To date, a total of **92,161** acres have burned during **77** Wildland fires on NDF jurisdictional lands. Of those, **36** were human caused for **13,897** acres, and **40** were lightning caused for **78,263** acres. The 10 year average for NDF is 104 fires for 17,260 acres burned.

Bureau of Land Management

To date, a total of **883,272** acres have burned during **513** Wildland fires on BLM jurisdictional lands. Of those, **141** were human caused for 16,811 acres, and **372** were lightning caused for **866,461** acres. **The 10 year average for the BLM is 600 fires for 333,663 acres burned.**

U.S. Forest Service

To date, a total of **18,070** acres have burned during **115** Wildland fires on USFS jurisdictional lands. Of those **33** were human caused for **9,363** acres, and **82** were lightning caused for **8,707** acres. The 10 year average for the USFS is 196 fires for 26,057 acres burned.

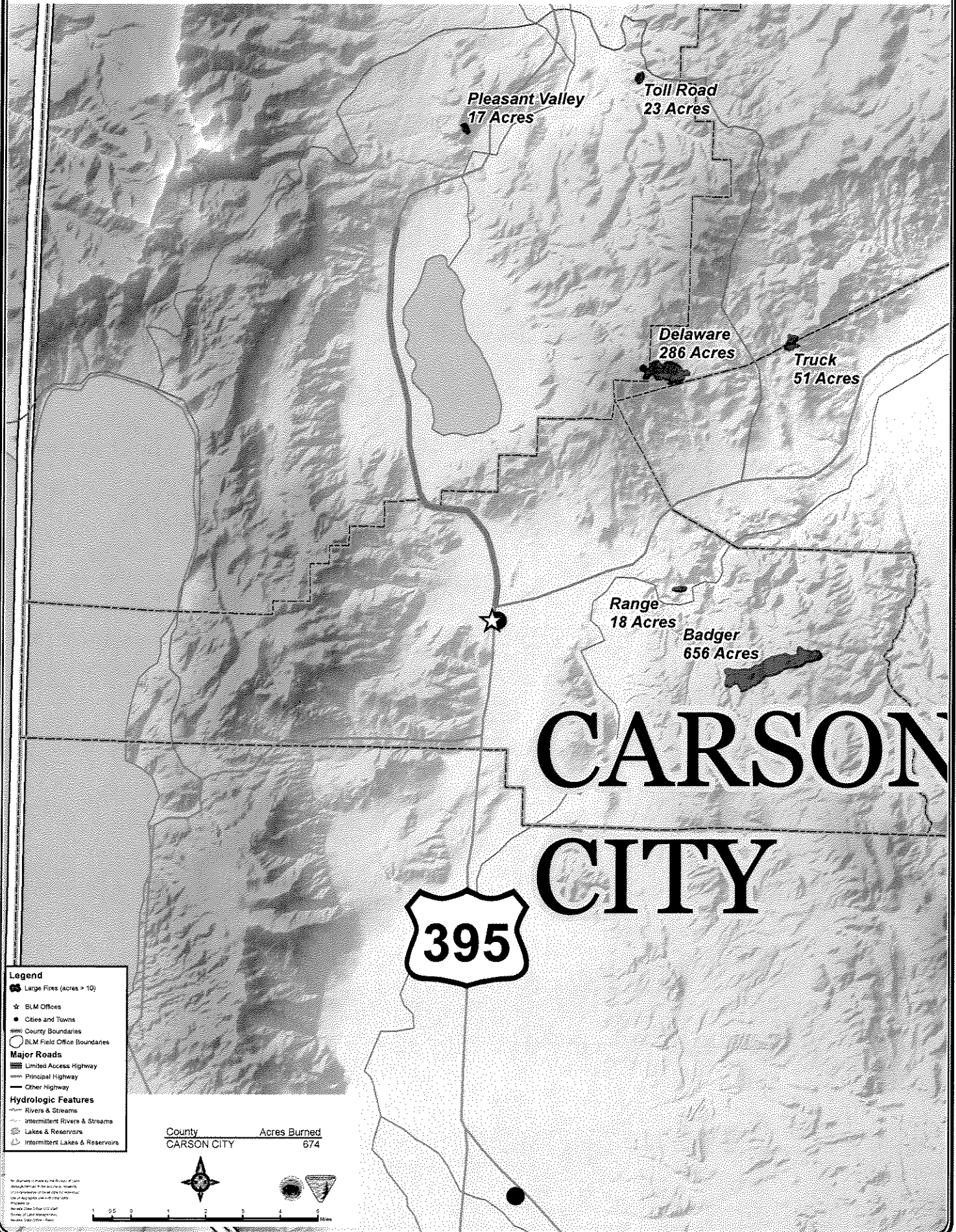
Fire Rehabilitation

The BLM has submitted ES&R plans for 44 fires that total 870,000 acres. Aerial and drill seeding is planned for more than 136,000 of these acres. NDF plans fire rehabilitation on 15 fires for 400 acres.

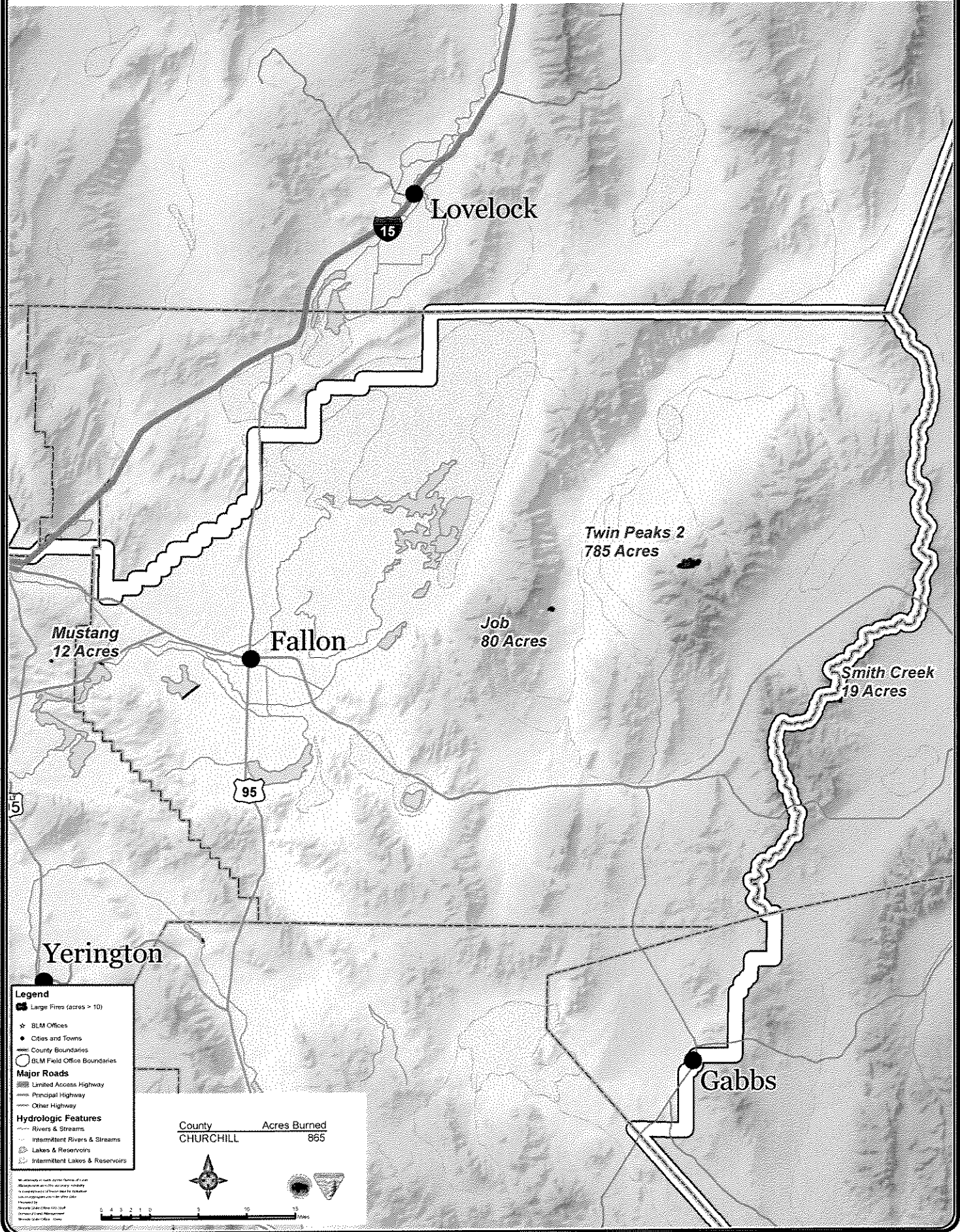
Conclusion

The State of Nevada continues to see larger, more intense and frequent Wildland fires across the state, as is the case throughout the west. Wildland fires result in significant economic impacts to our communities, agricultural operations, outdoor recreation use, wildlife habitat and native vegetation. It is critical that the agencies continue to work with Nevada communities and private citizens to mitigate the effects wildfire has to public and private lands. The Nevada Wildland Fire agencies supported the Nevada Community Wildfire Risk/Hazard Assessment Project and will work with the communities on those plans. The carry-over of fine fuels and possible new fuel growth in a major concern for 2006, and the Wildland Fire agencies will work with all their partners in trying to address mitigation opportunities relating to the fuels.

2005 Fire Season Activity - Carson City County

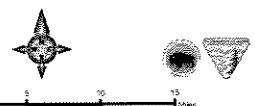


2005 Fire Season Activity - Churchill County

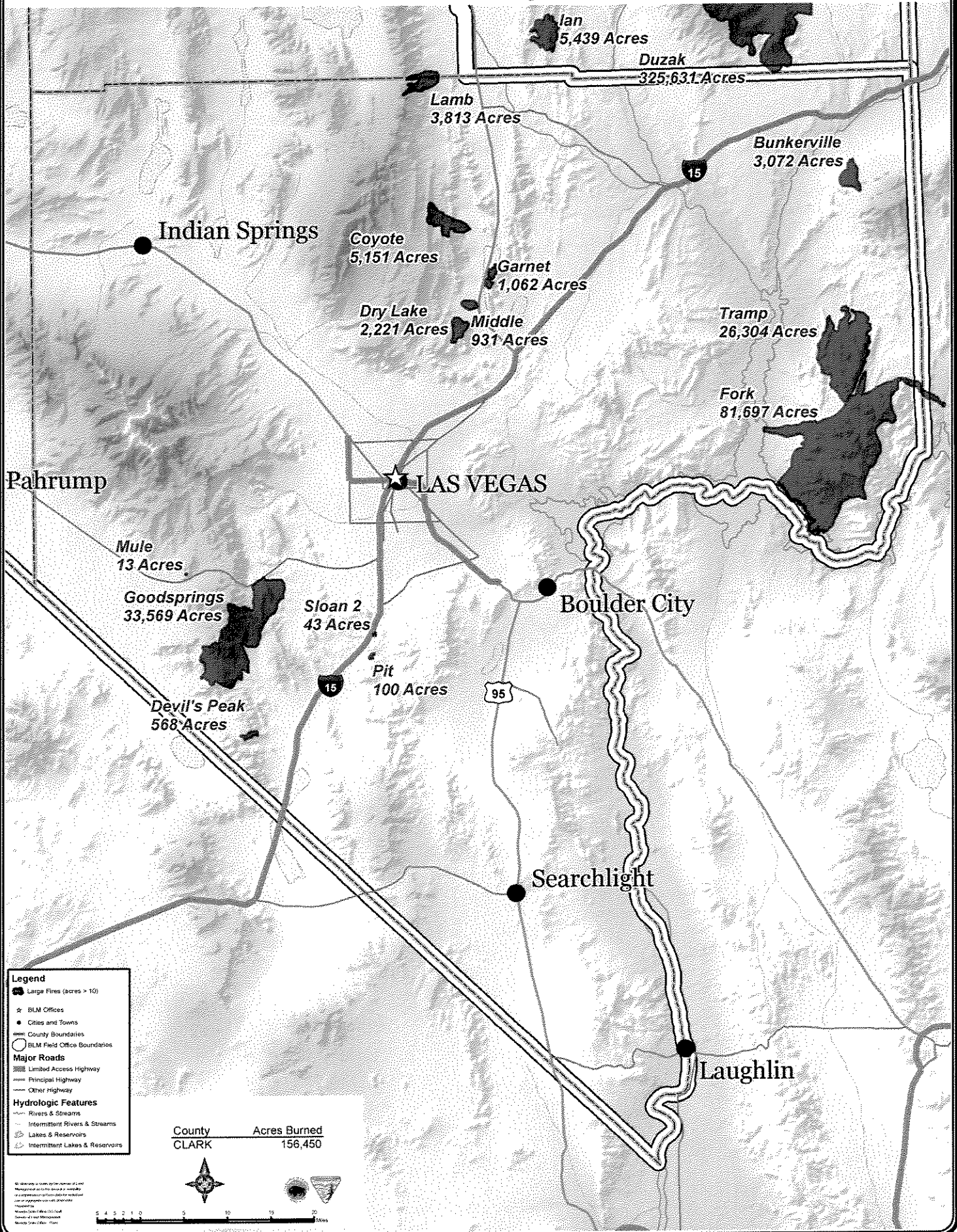


- Legend**
- Large Fires (acres > 10)
 - ★ BLM Offices
 - Cities and Towns
 - County Boundaries
 - BLM Field Office Boundaries
- Major Roads**
- ▬ Limited Access Highway
 - ▬ Principal Highway
 - ▬ Other Highway
- Hydrologic Features**
- ▬ Rivers & Streams
 - ▬ Intermittent Rivers & Streams
 - Lakes & Reservoirs
 - ▬ Intermittent Lakes & Reservoirs

County	Acres Burned
CHURCHILL	865



2005 Fire Season Activity - Clark County



2005 Fire Season Activity - Douglas County

Range
★ 18 Acres Badger
656 Acres

CARSON CITY



Gardnerville

Mud Lake
580 Acres

Legend

- ★ Large Fires (acres > 10)
- ◆ BLM Offices
- Cities and Towns
- County Boundaries
- BLM Field Office Boundaries

Major Roads

- ▨ Limited Access Highway
- ▨ Principal Highway
- ▨ Other Highway

Hydrologic Features

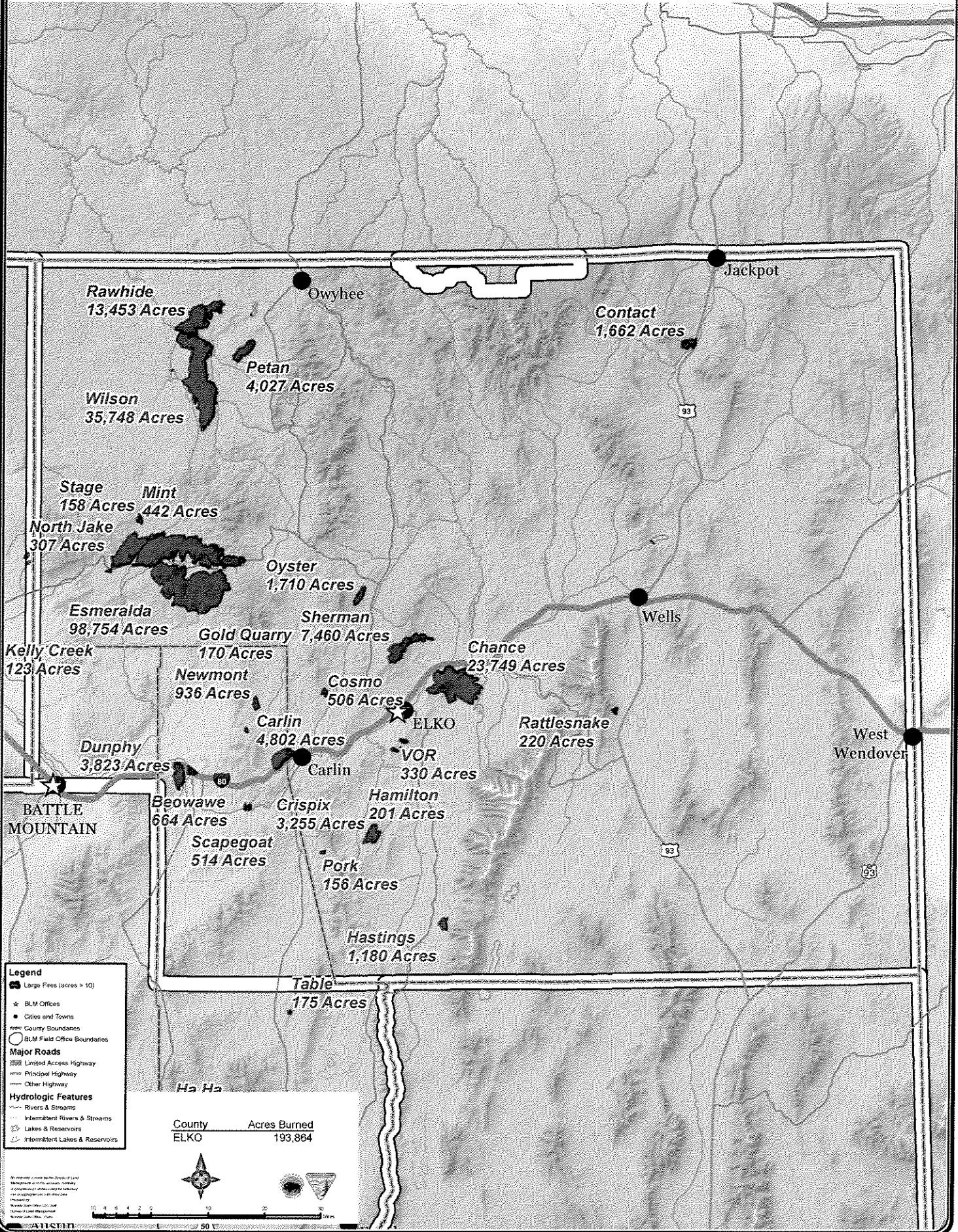
- ▨ Rivers & Streams
- ▨ Intermittent Rivers & Streams
- ▨ Lakes & Reservoirs
- ▨ Intermittent Lakes & Reservoirs

County	Acres Burned
DOUGLAS	431

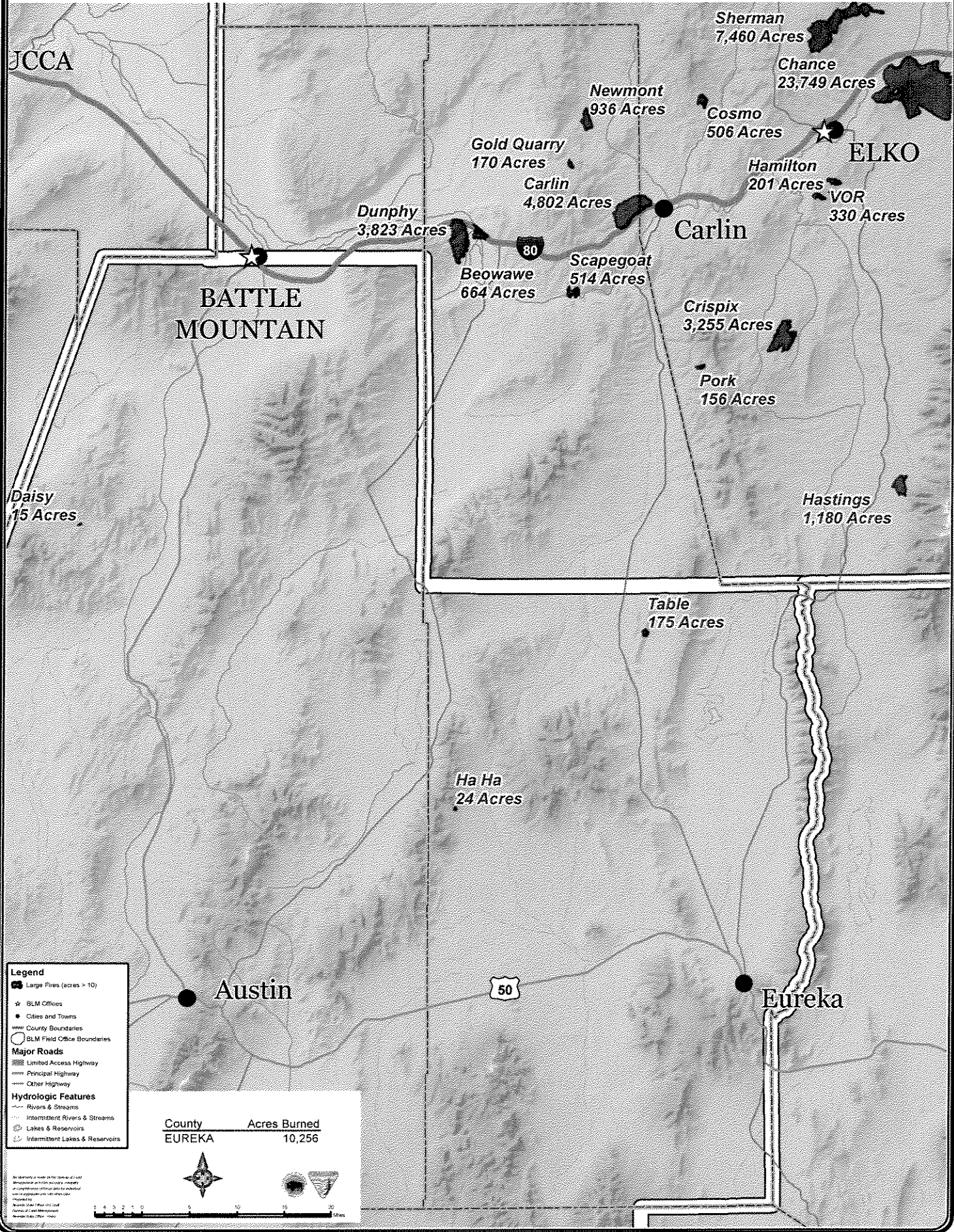


Map prepared by Douglas County Office & staff
Map data provided by USGS, BLM, and other sources
© 2005 Douglas County Office
Printed in USA
Map data provided by USGS, BLM, and other sources
Douglas County Office
Map data provided by USGS, BLM, and other sources

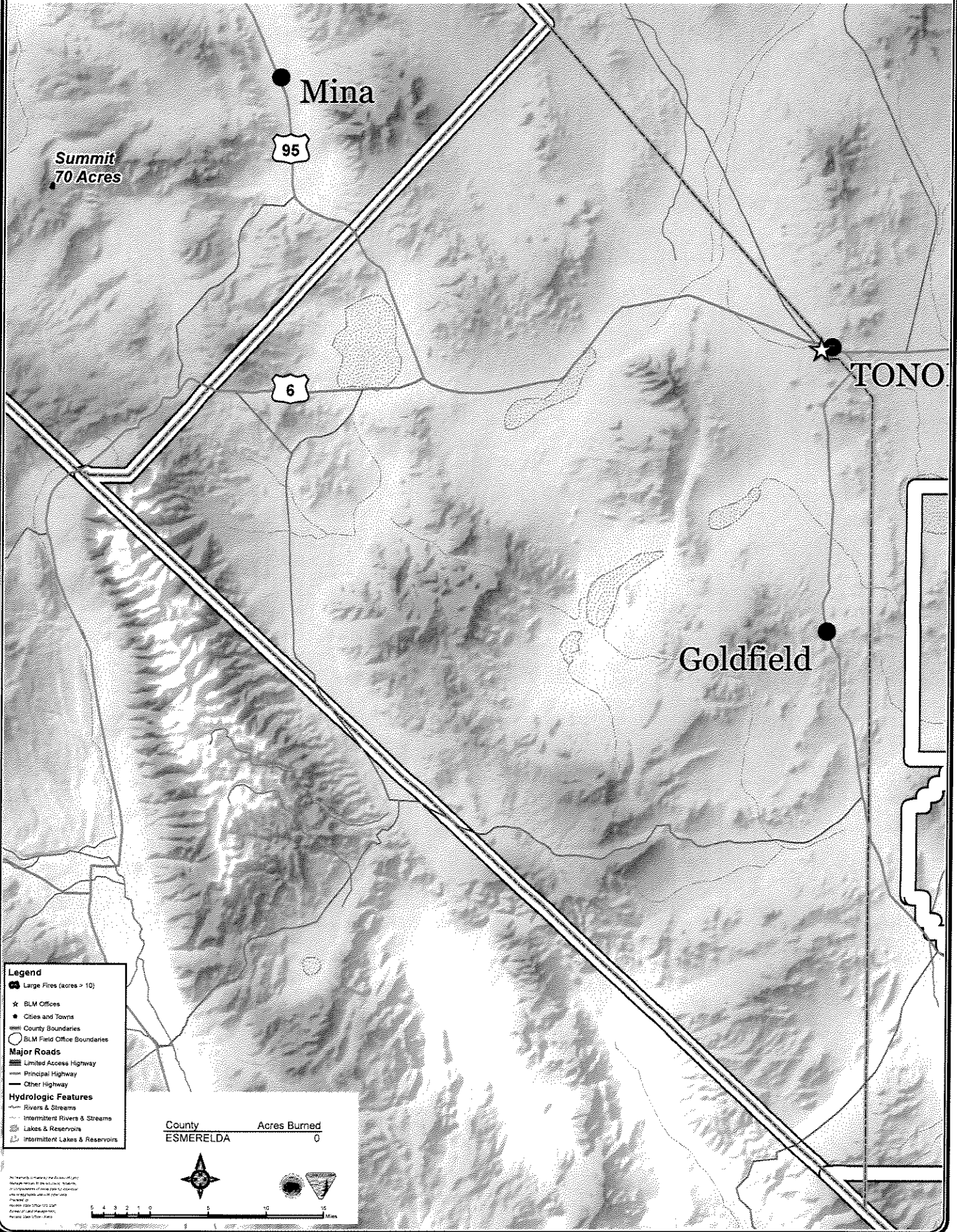
2005 Fire Season Activity - Elko County



2005 Fire Season Activity - Eureka County



2005 Fire Season Activity - Esmerelda County



Summit
70 Acres

Mina

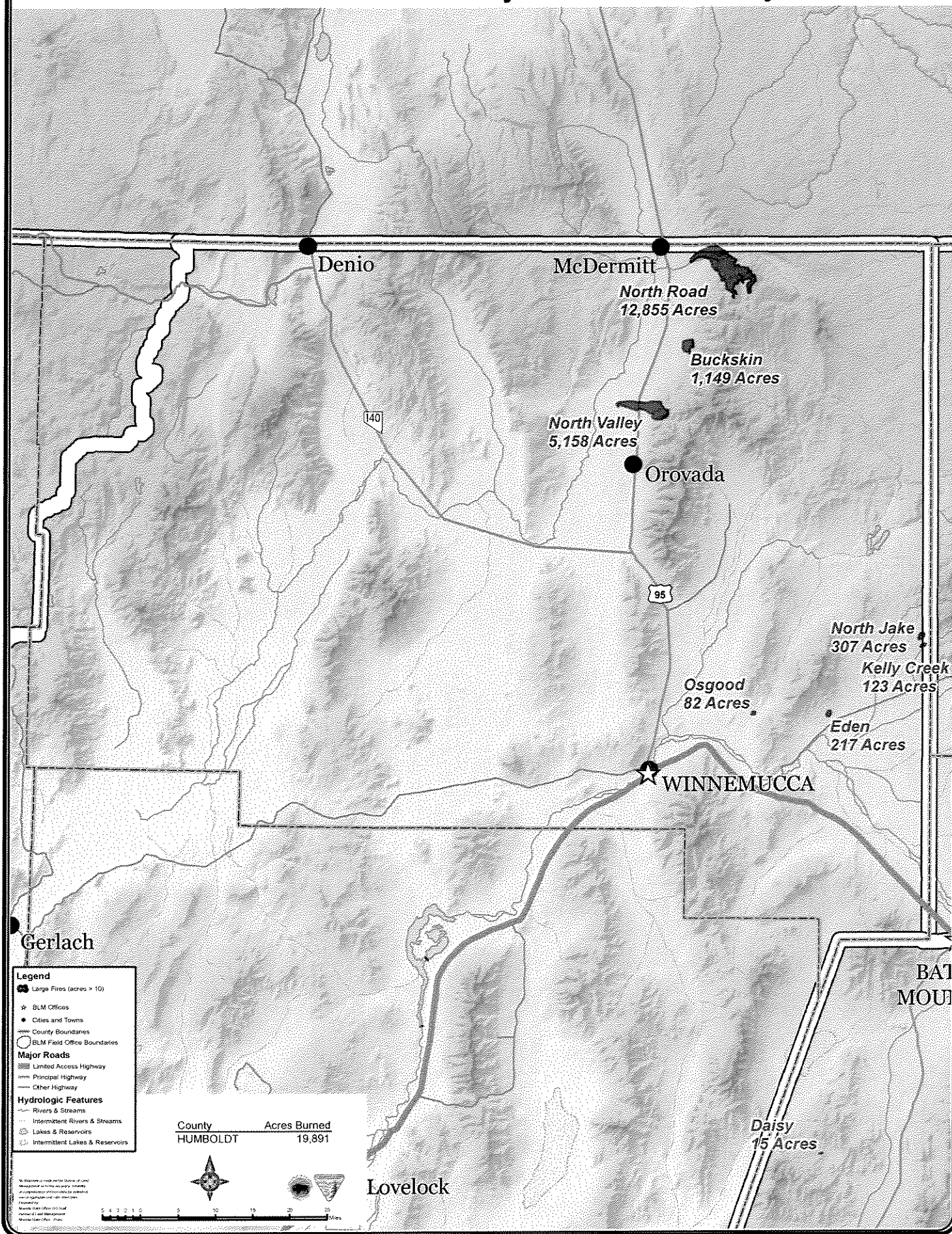
95

6

TONO

Goldfield

2005 Fire Season Activity - Humboldt County



Legend

- Large Fires (acres > 10)
- ★ BLM Offices
- Cities and Towns
- ▭ County Boundaries
- BLM Field Office Boundaries

Major Roads

- ▬ Limited Access Highway
- ▬ Principal Highway
- ▬ Other Highway

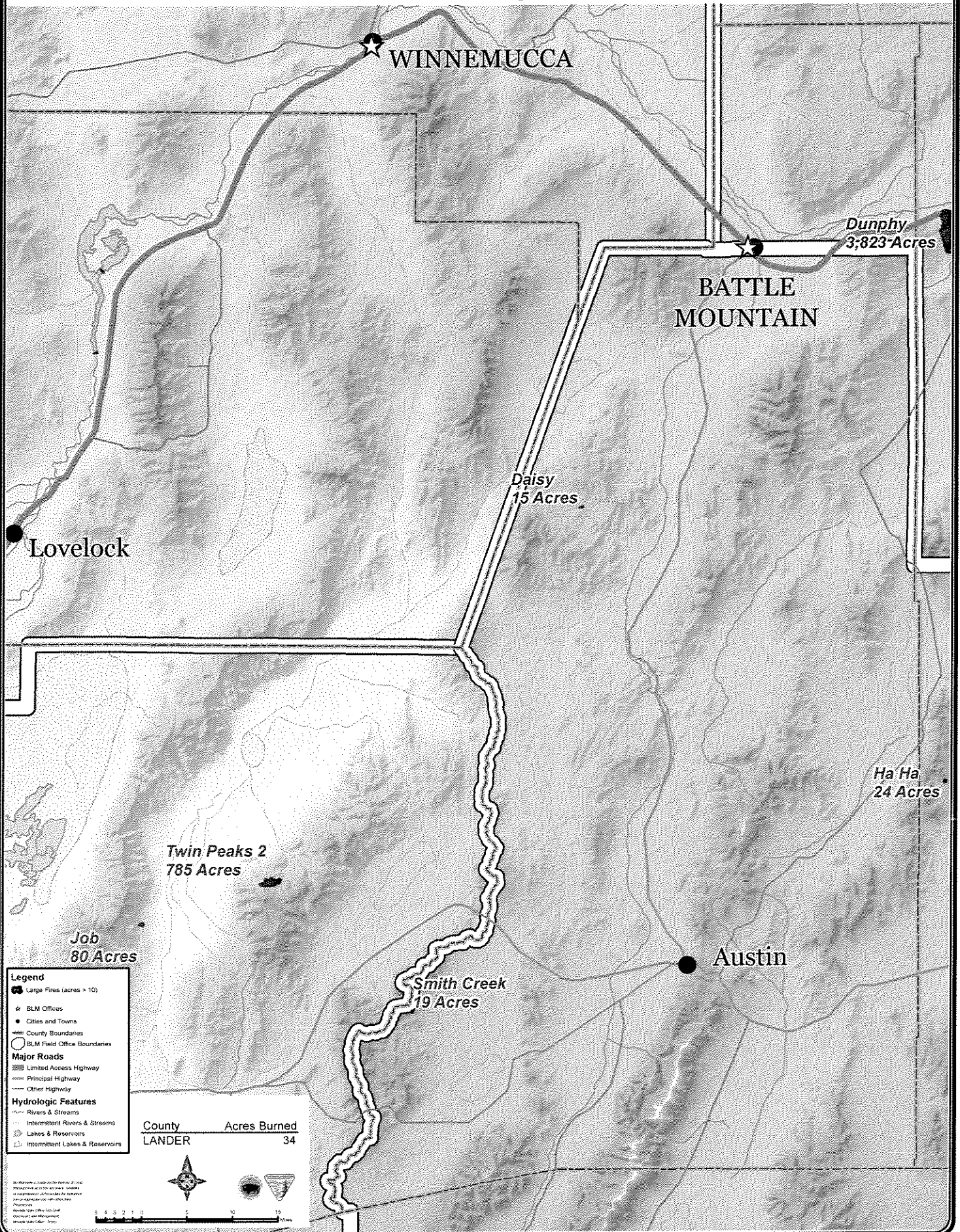
Hydrologic Features

- ▬ Rivers & Streams
- ▬ Intermittent Rivers & Streams
- Lakes & Reservoirs
- Intermittent Lakes & Reservoirs

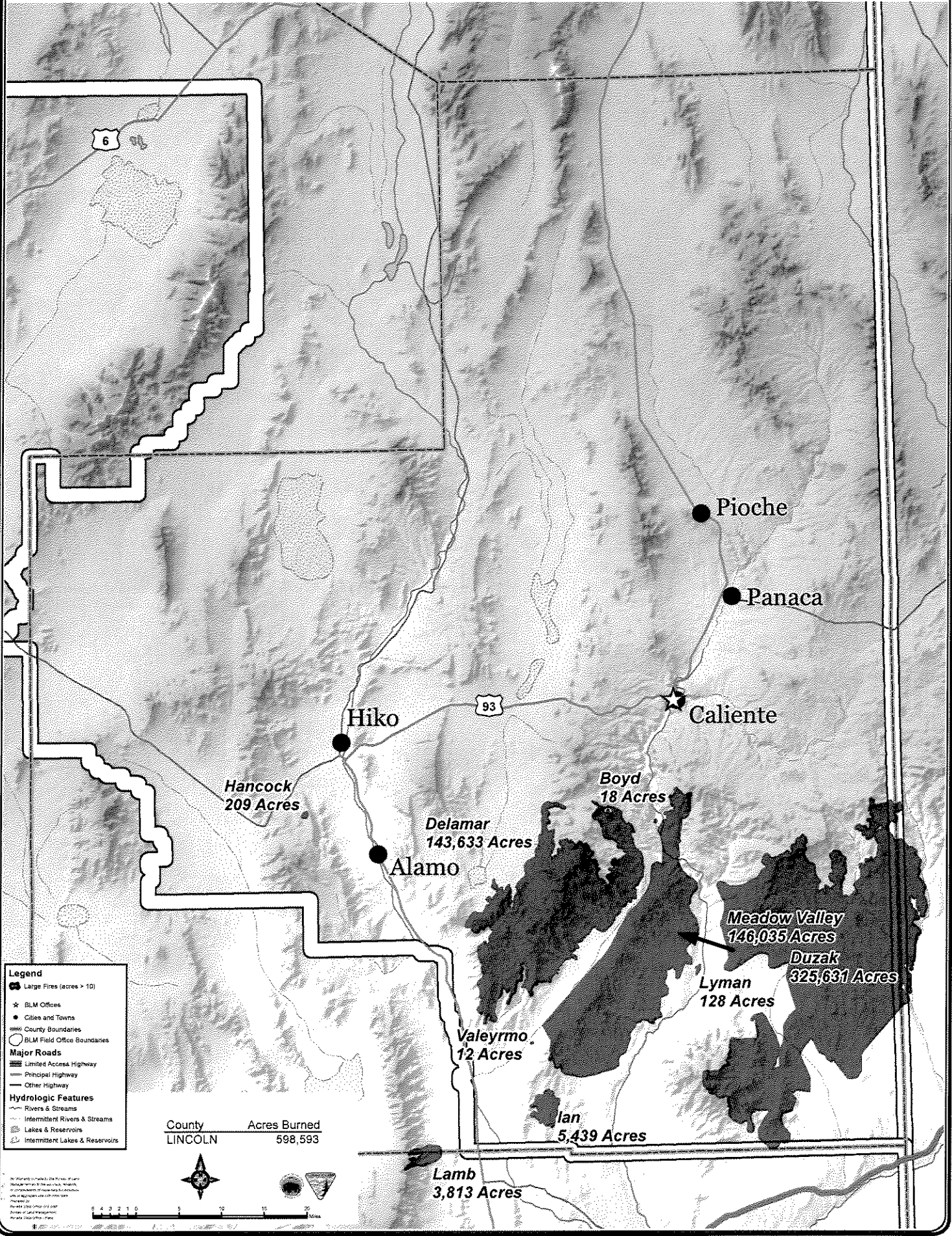
County	Acres Burned
HUMBOLDT	19,891



2005 Fire Season Activity - Lander County



2005 Fire Season Activity - Lincoln County



Legend

- Large Fires (acres > 10)
- BLM Offices
- Cities and Towns
- County Boundaries
- BLM Field Office Boundaries

Major Roads

- Limited Access Highway
- Principal Highway
- Other Highway

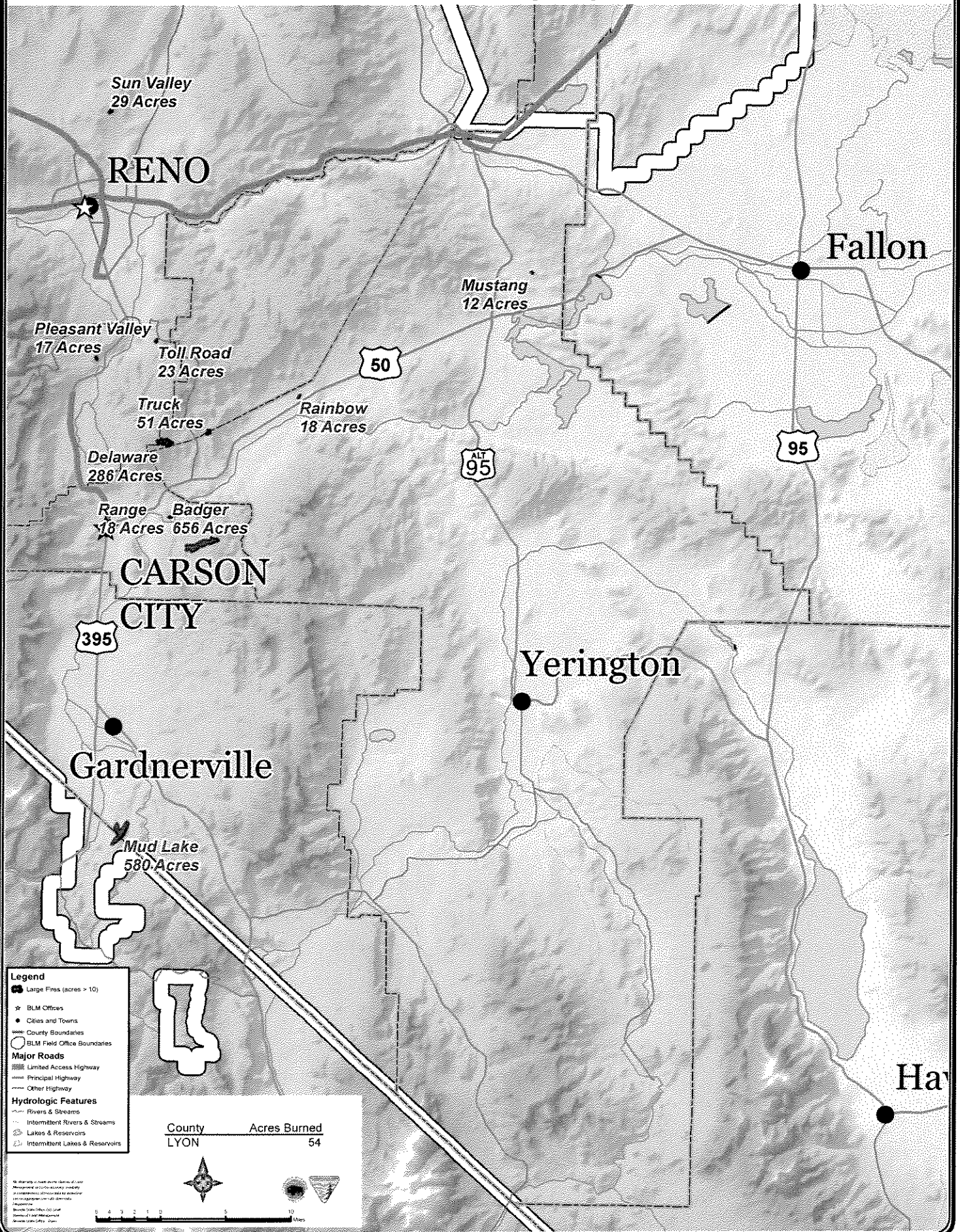
Hydrologic Features

- Rivers & Streams
- Intermittent Rivers & Streams
- Lakes & Reservoirs
- Intermittent Lakes & Reservoirs

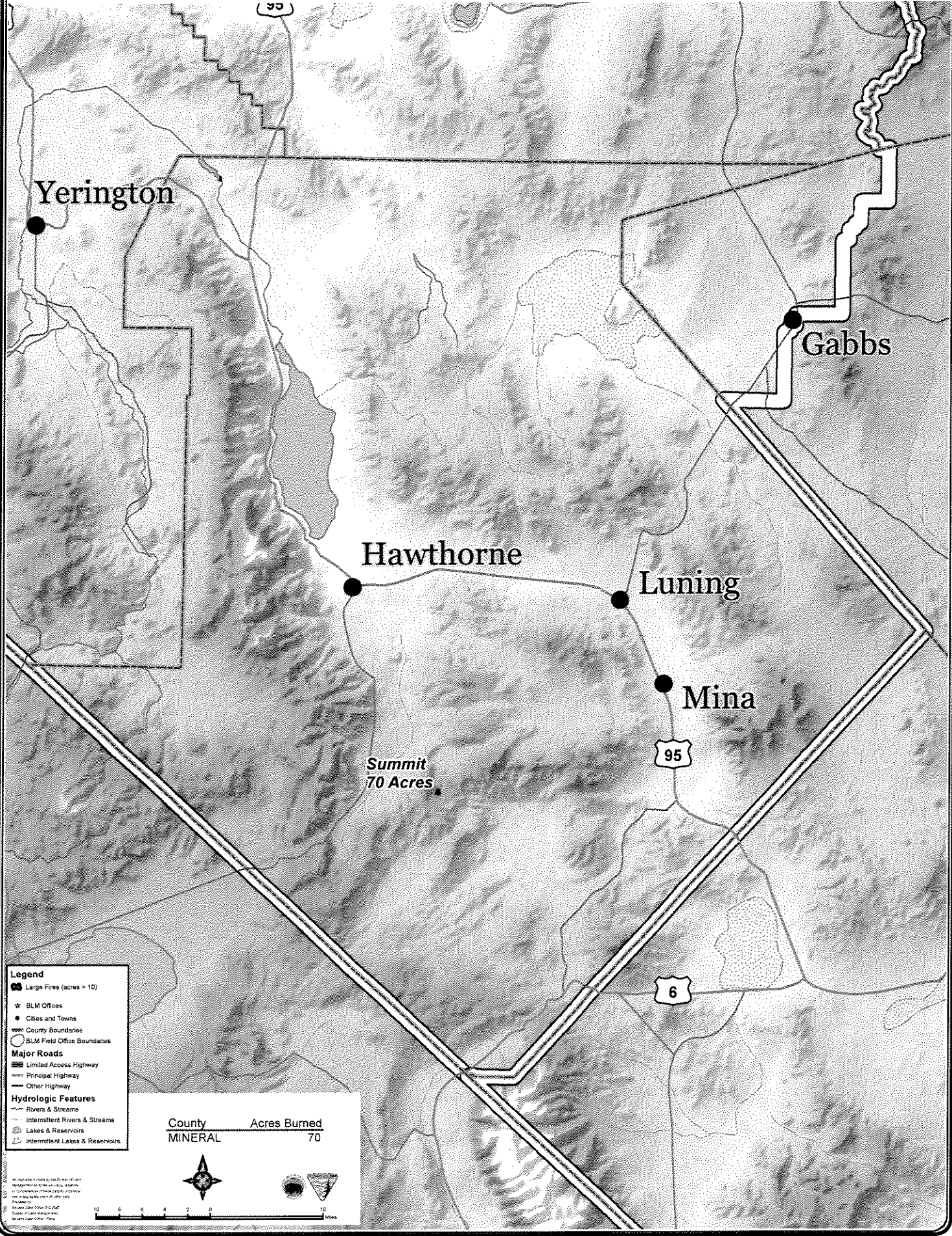
County **LINCOLN** Acres Burned **598,593**



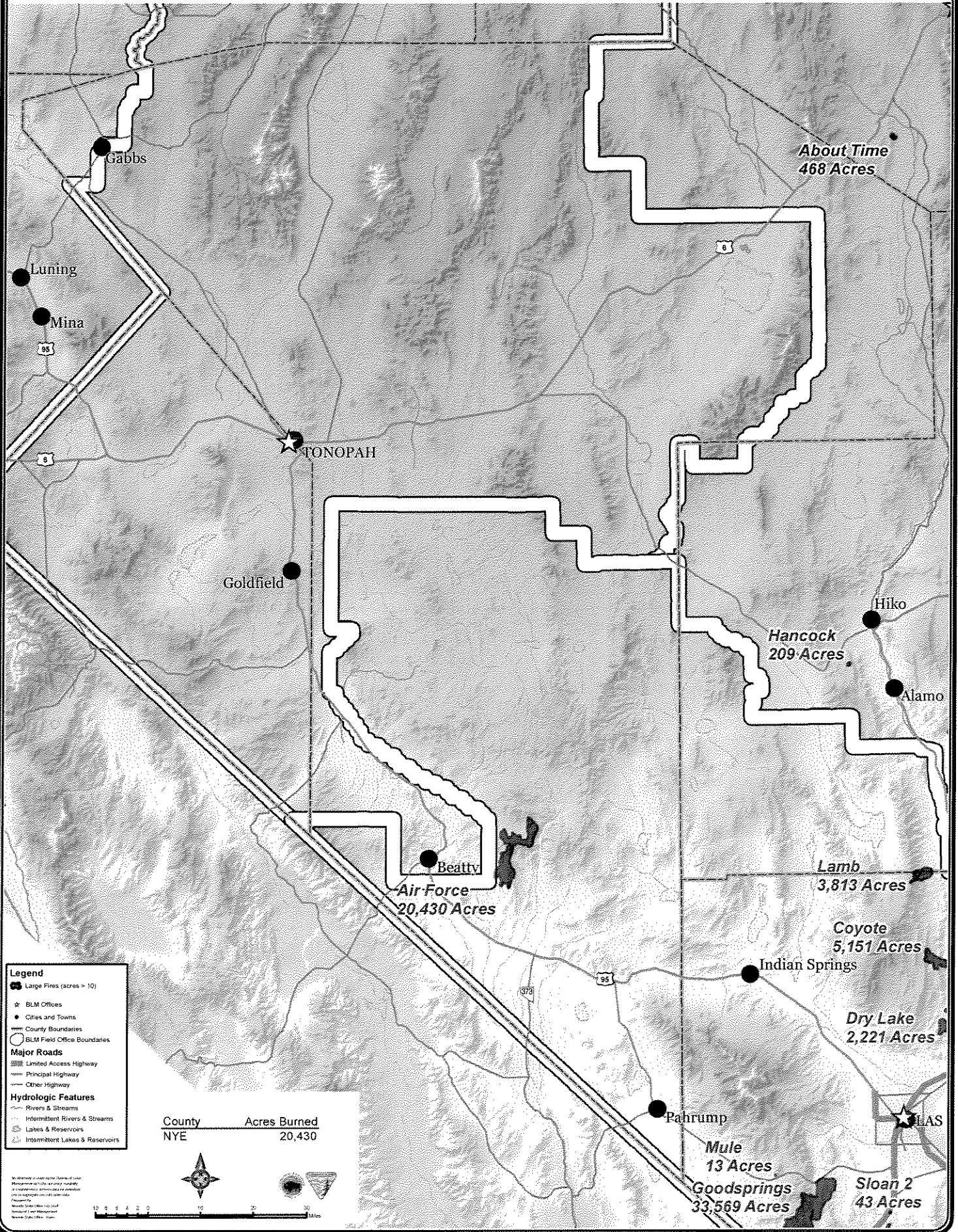
2005 Fire Season Activity - Lyon County



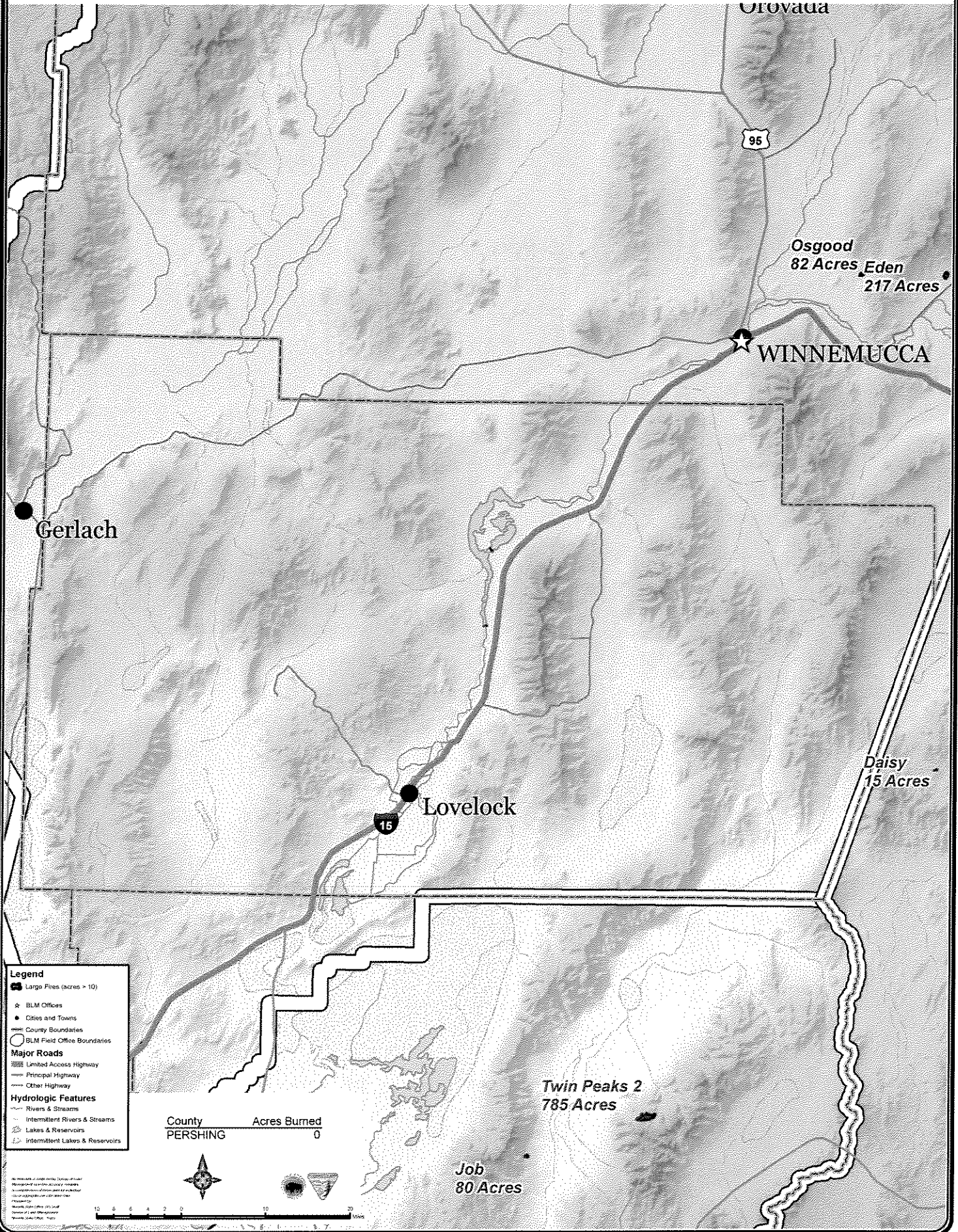
2005 Fire Season Activity - Mineral County



2005 Fire Season Activity - Nye County

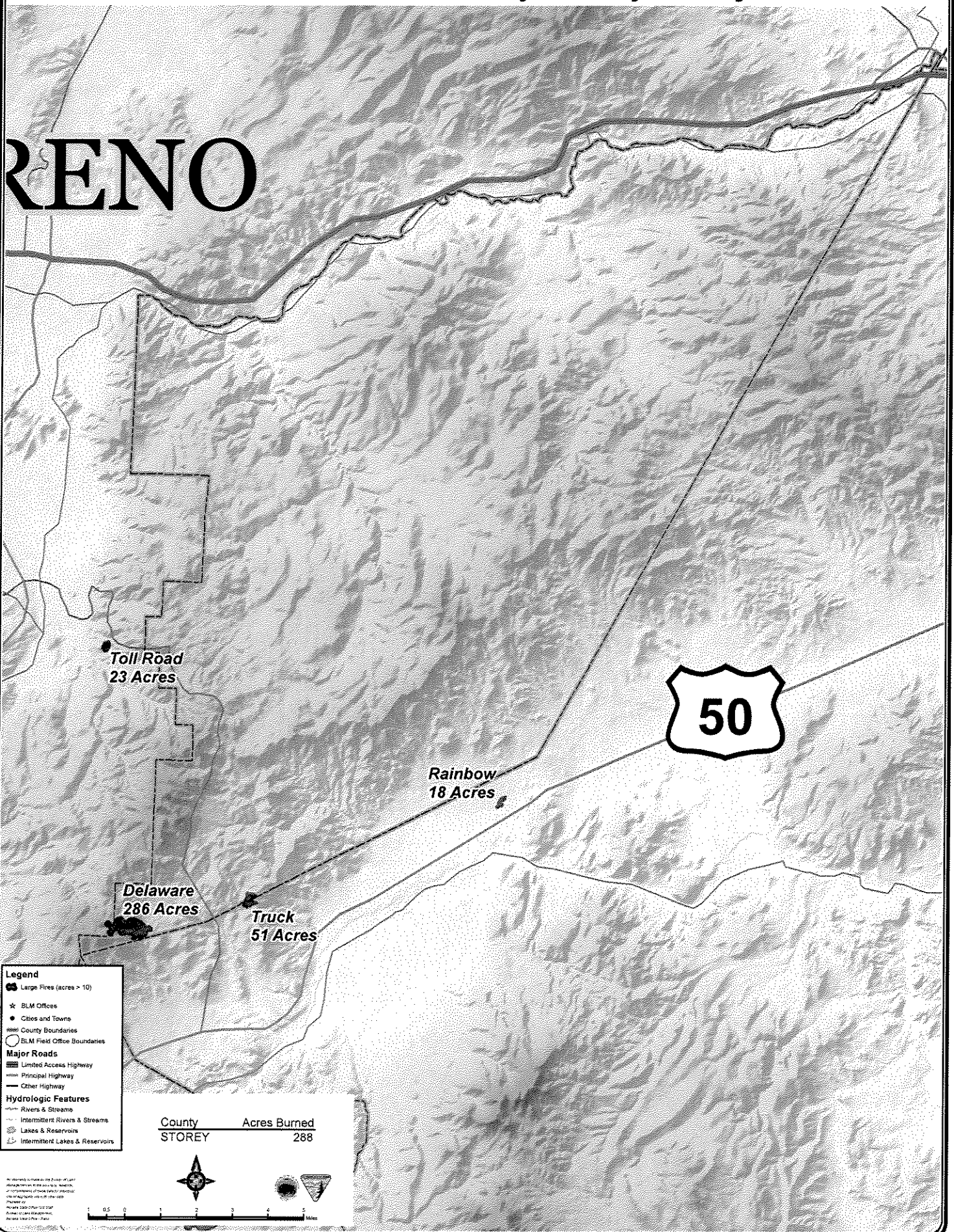


2005 Fire Season Activity - Pershing County



2005 Fire Season Activity - Storey County

RENO



Toll Road
23 Acres

Rainbow
18 Acres

Delaware
286 Acres

Truck
51 Acres

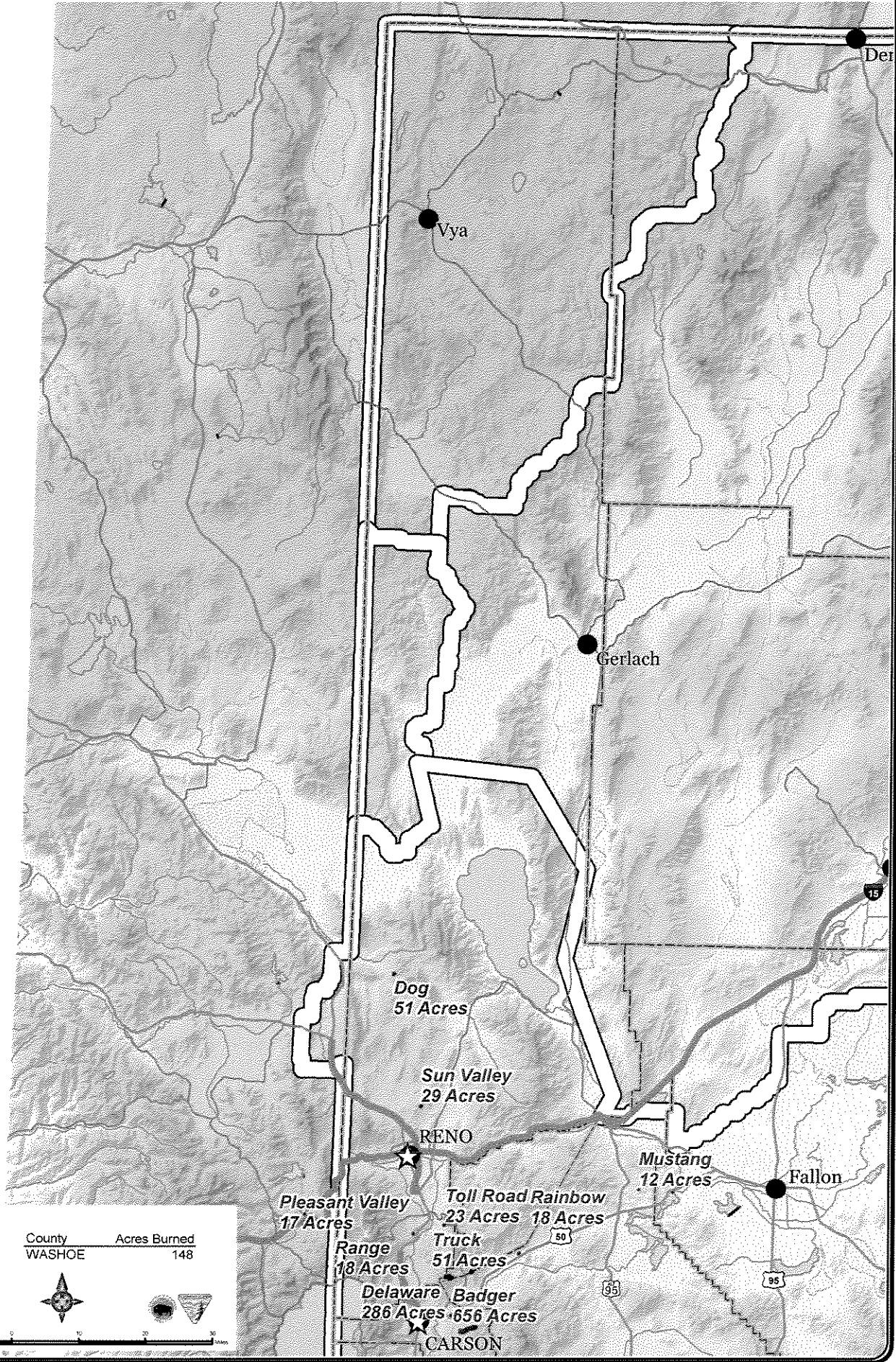


- Legend**
- Large Fires (acres > 10)
 - ★ BLM Offices
 - Cities and Towns
 - County Boundaries
 - BLM Field Office Boundaries
 - Major Roads**
 - ▬ Limited Access Highway
 - ▬ Principal Highway
 - ▬ Other Highway
 - Hydrologic Features**
 - ▬ Rivers & Streams
 - ▬ Intermittent Rivers & Streams
 - Lakes & Reservoirs
 - Intermittent Lakes & Reservoirs

County	Acres Burned
STOREY	288



2005 Fire Season Activity - Washoe County

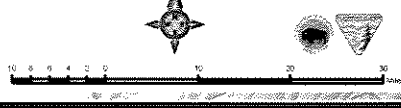


Legend

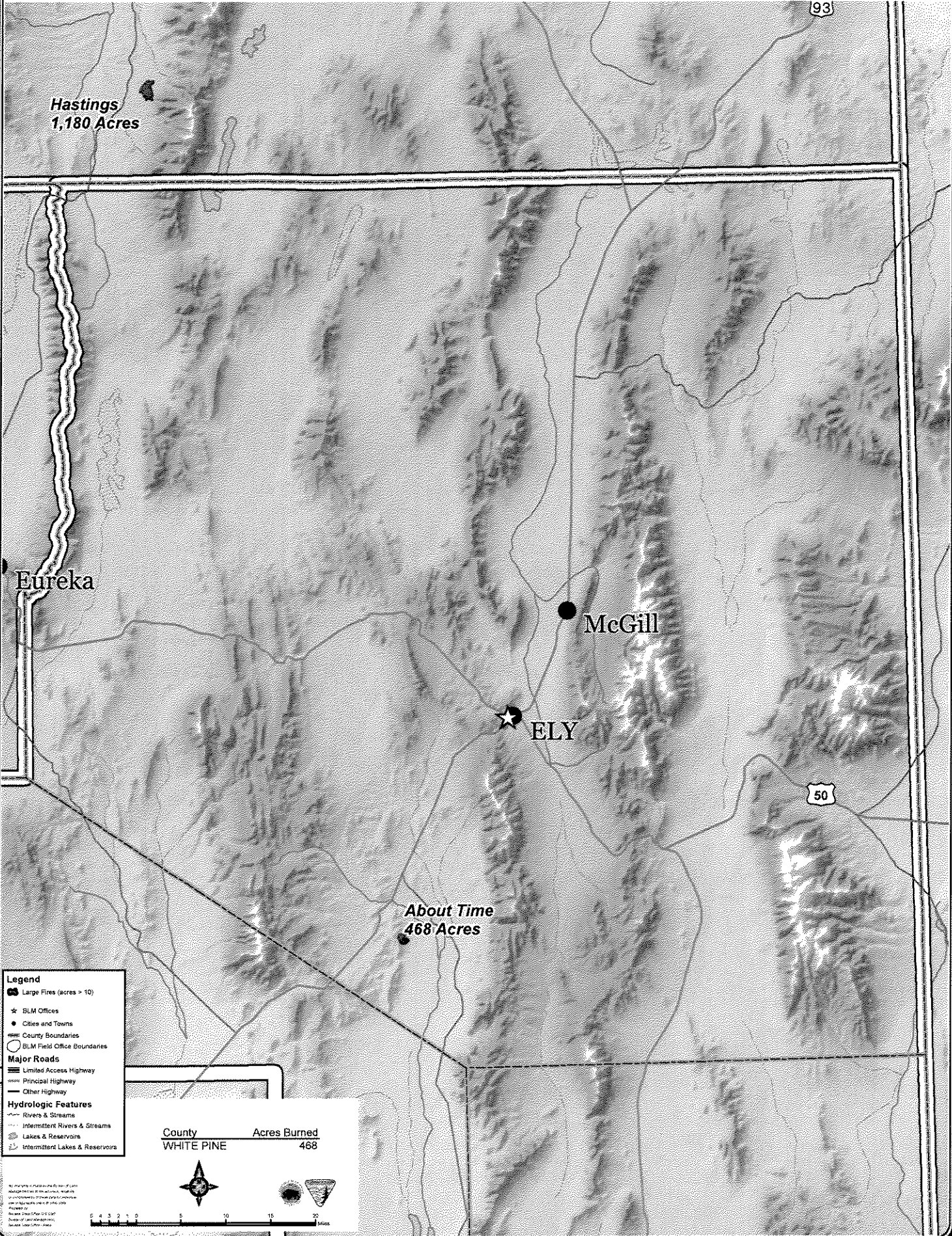
- Large Fires (acres > 10)
- BLM Offices
- Cities and Towns
- County Boundaries
- BLM Field Office Boundaries
- Major Roads**
- Limited Access Highway
- Principal Highway
- Other Highway
- Hydrologic Features**
- Rivers & Streams
- Intermittent Rivers & Streams
- Lakes & Reservoirs
- Intermittent Lakes & Reservoirs

County	Acres Burned
WASHOE	148

All statistics are based on the Bureau of Land Management's official boundary. All boundaries are shown for informational purposes only. Boundaries are subject to change. Washoe County Office of Management and Administration



2005 Fire Season Activity - White Pine County



Hastings
1,180 Acres

Eureka

McGill

ELY

About Time
468 Acres

50

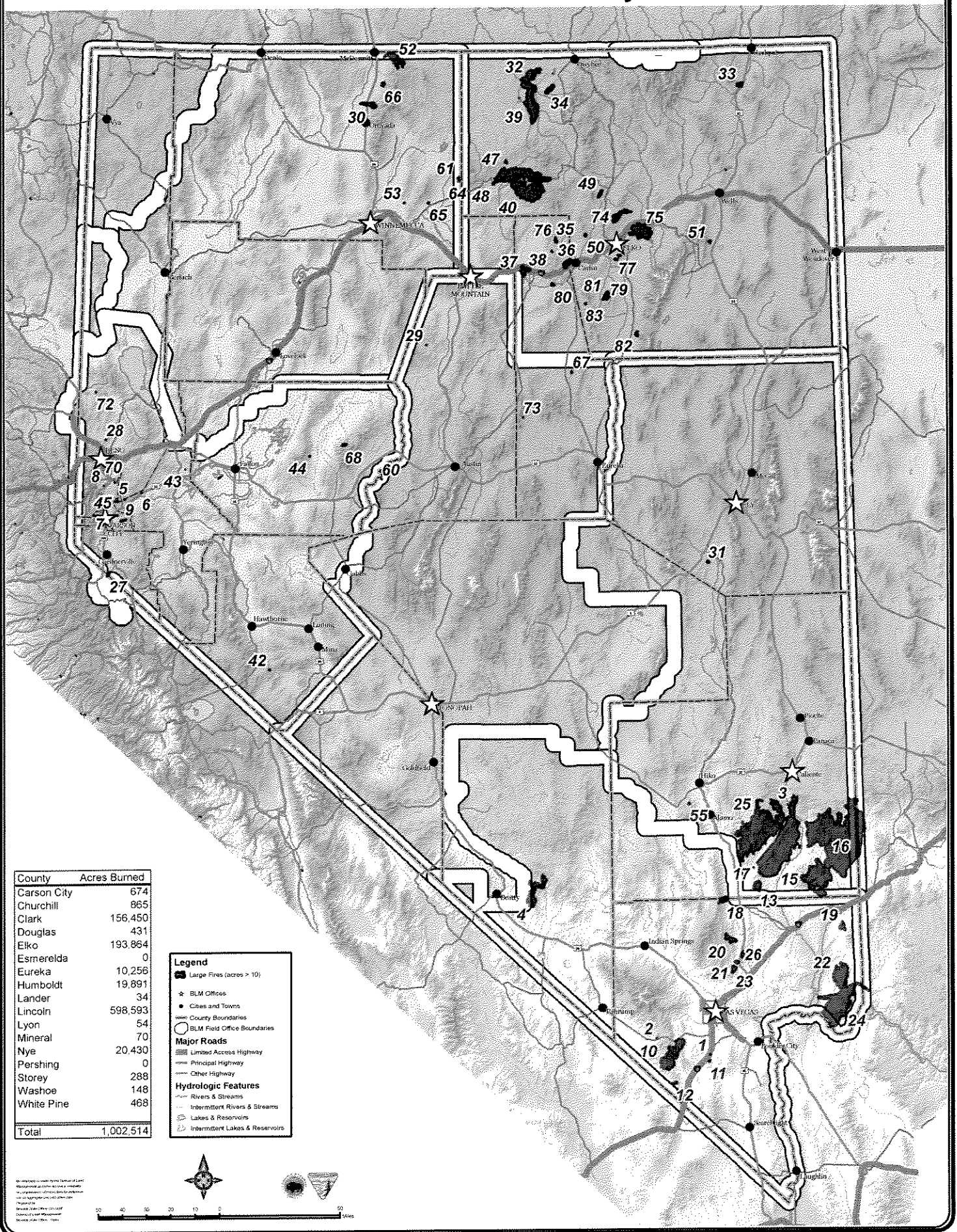
93

- Legend**
- Large Fires (acres > 10)
 - ★ BLM Offices
 - Cities and Towns
 - ▭ County Boundaries
 - BLM Field Office Boundaries
- Major Roads**
- ▬ Limited Access Highway
 - ▬ Principal Highway
 - ▬ Other Highway
- Hydrologic Features**
- ~ Rivers & Streams
 - ~ Intermittent Rivers & Streams
 - Lakes & Reservoirs
 - Intermittent Lakes & Reservoirs

County	Acres Burned
WHITE PINE	468



2005 Fire Season Activity



ID	Fire Name	Acres			
1	Sloan 2	43			
2	Mule	13			
3	Boyd	18			
4	Air Force	20,430			
5	Truck	51			
6	Rainbow	18			
7	Range	18			
8	Pleasant Valley	17			
9	Badger	656			
10	Goodsprings	33,569			
11	Pit	100			
12	Devil's Peak	568			
13	Ian	5,439			
14	Lyman	128			
15	Meadow Valley	146,035			
16	Duzak	325,631			
17	Valeyymo	12			
18	Lamb	3,813			
19	Bunkerville	3,072			
20	Coyote	5,151			
21	Middle	931			
22	Tramp	26,304			
23	Dry Lake	2,221			
24	Fork	81,697			
25	Delamar	143,633			
26	Garnet	1,062			
27	Mud Lake	580			
28	Sun Valley	29			
29	Daisy	15			
30	North Valley	5,158			
31	About Time	468			
32	Rawhide	13,453			
33	Contact	1,662			
34	Petan	4,027			
35	Gold Quarry	170			
36	Carlin	4,802			
37	Dunphy	3,823			
38	Beowawe	664			
39	Wilson	35,748			
40	Esmeralda	98,754			
42	Summit	70			
43	Mustang	12			
44	Job	80			
45	Delaware	286			
47	Mint	442			
48	Stage	158			
49	Oyster	1,710			
50	Cosmo	506			
51	Rattlesnake	220			
52	North Road	12,855			
53	Osgood	82			
60	Smith Creek	19			
55	Hancock	209			
61	North Jake	307			
64	Kelly Creek	123			
65	Eden	217			
66	Buckskin	1,149			
67	Table	175			
68	Twin Peaks 2	785			
70	Toll Road	23			
72	Dog	51			
73	Ha Ha	24			
74	Sherman	7,460			
75	Chance	23,749			
76	Newmont	936			
77	VOR	330			
79	Hamilton	201			
80	Scapegoat	514			
81	Crispix	3,255			
82	Hastings	1,180			
83	Pork	156			
	Total Acres =	1,027,265	(24,751 acres out of state)		
	Count =	71			

2005 Fire Season Activity & Previous Years

