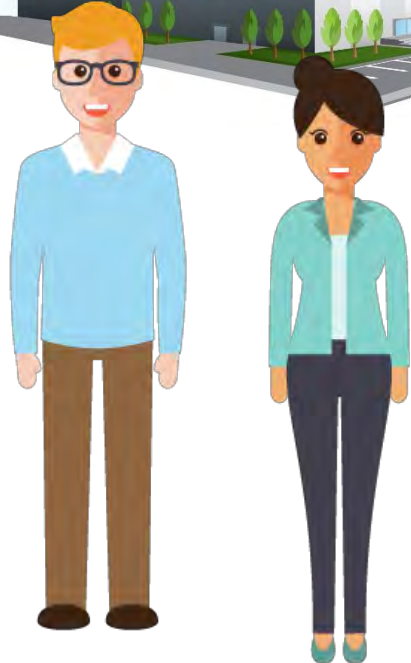


MAXIMIZING INDEPENDENCE IN THE COMMUNITY



SUPPORTED LIVING ARRANGEMENT (SLA)



Agenda Item III A-7 (SeniorVetSpecial)
Meeting Date: 04-12-18

FOR PERSONS WITH INTELLECTUAL DISABILITIES

PROGRAMS FOR PERSONS WITH INTELLECTUAL DISABILITIES & RELATED CONDITIONS

(8) DEVELOPMENTAL DISABILITY.-

- (A) IN GENERAL. -The term "developmental disability" means a severe, chronic disability of an individual that
- (i) is attributable to a mental or physical impairment or combination of mental and physical impairments;
 - (ii) is manifested before the individual attains age 22;
 - (iii) is likely to continue indefinitely;
 - (iv) results in substantial functional limitations in 3 or more of the following areas of major life activity:
 - (I) Self-care.
 - (II) Receptive and expressive language.
 - (III) Learning.
 - (IV) Mobility.
 - (V) Self-direction.
 - (VI) Capacity for independent living.
 - (VII) Economic self-sufficiency; and
 - (v) reflects the individual's need for a combination and sequence of special, interdisciplinary, or generic services, individualized supports, or other forms of assistance that are of lifelong or extended duration and are individually planned and coordinated

PROGRAMS FOR PERSONS WITH INTELLECTUAL DISABILITIES & RELATED CONDITIONS

Intellectual Disabilities or closely related developmental disabilities like:

- Autism
- Down Syndrome
- Acquired or Traumatic Brain Injury
- Prader Willi Syndrome



Department of Health & Human Services



Aging & Disability Services Division



Regional Centers (DRC, RRC, SRC)



**PROGRAMS FOR PERSONS WITH INTELLECTUAL
DISABILITIES AND RELATED CONDITIONS**



SUPPORTED LIVING ARRANGEMENT (SLA)



Services

Intermittent SLA

The service recipients in this program require intermittent support while living in a home or apartment by themselves, with a roommate, or with family. The service recipient receives a minimum (from several hours per week) to moderate (daily) support from paid SLA staff according to the identified needs and desires. Support hours are determined by the team's assessment of the service recipient's service/support needs.

24 hour SLA

24 hour Supported Living Arrangements support service recipients in need of maximum support services. Staff are present whenever there are service recipients at home; there is awake or asleep staff at night depending on the needs of the service recipients. People typically live in a home with roommates in a community neighborhood and share the support services from the provider.

Host Homes

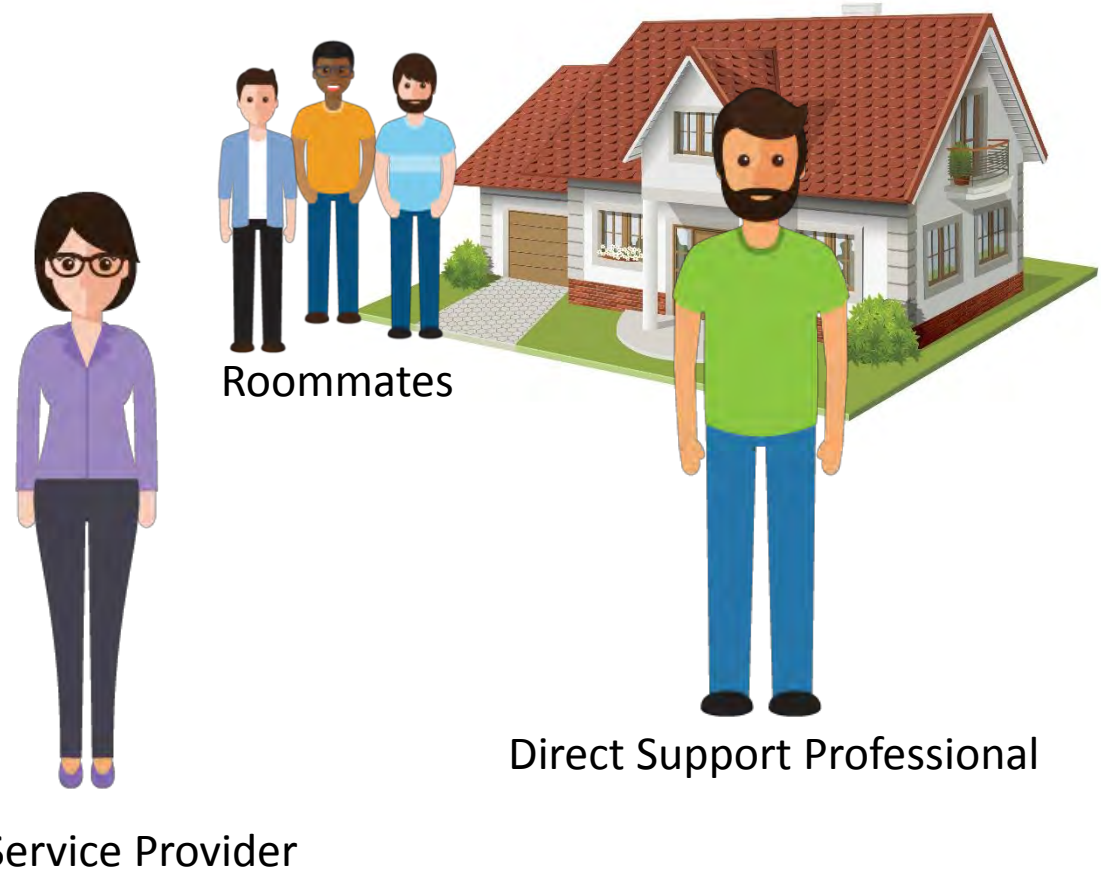
Service recipients who desire or need a family living situation receive services from a Host Home provider who includes the service recipient in their family life and activities. Direct services/supports are to assist in the acquisition, retention or improvement of skills for the service recipient to successfully reside in the community.



Regional Centers



Private Providers



24 Hour SLA

- 3 to 4 Individuals per Home
- Wake Graves
- Goal is Community Integration
- Yards and home maintained
- State QA Team audits frequently



Grocery Shopping





Cooking Meals

Cleaning



Teaching Skills





Medication Management



Memory Making



Direct Support Professional



Increased Recruiting Costs



Increased Training Costs



Health Insurance Laws & Increases



75% to 100% Turnover



Private Service Provider



**Daily Overtime,
Min Wage Increases
and 24 hour Care**