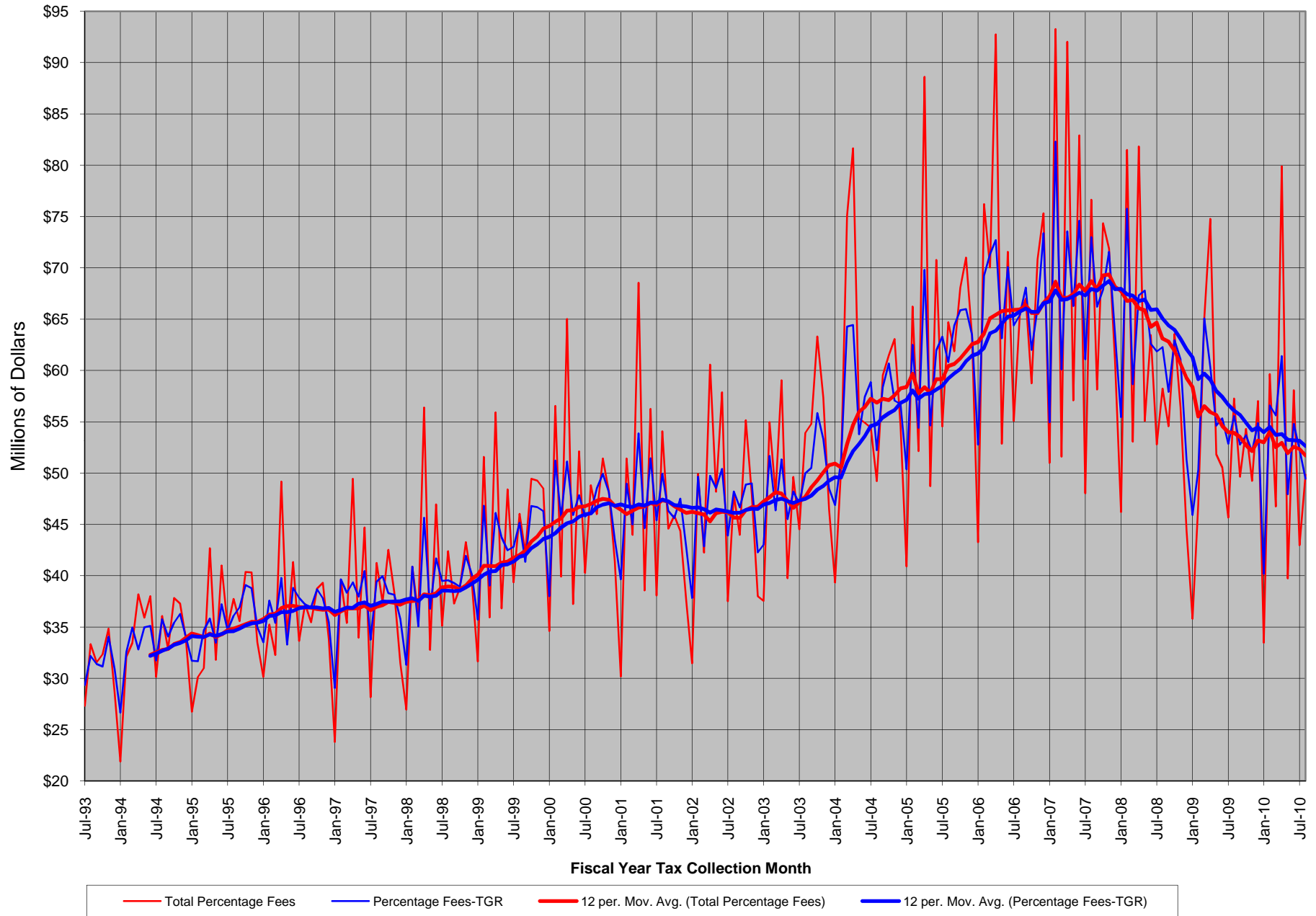
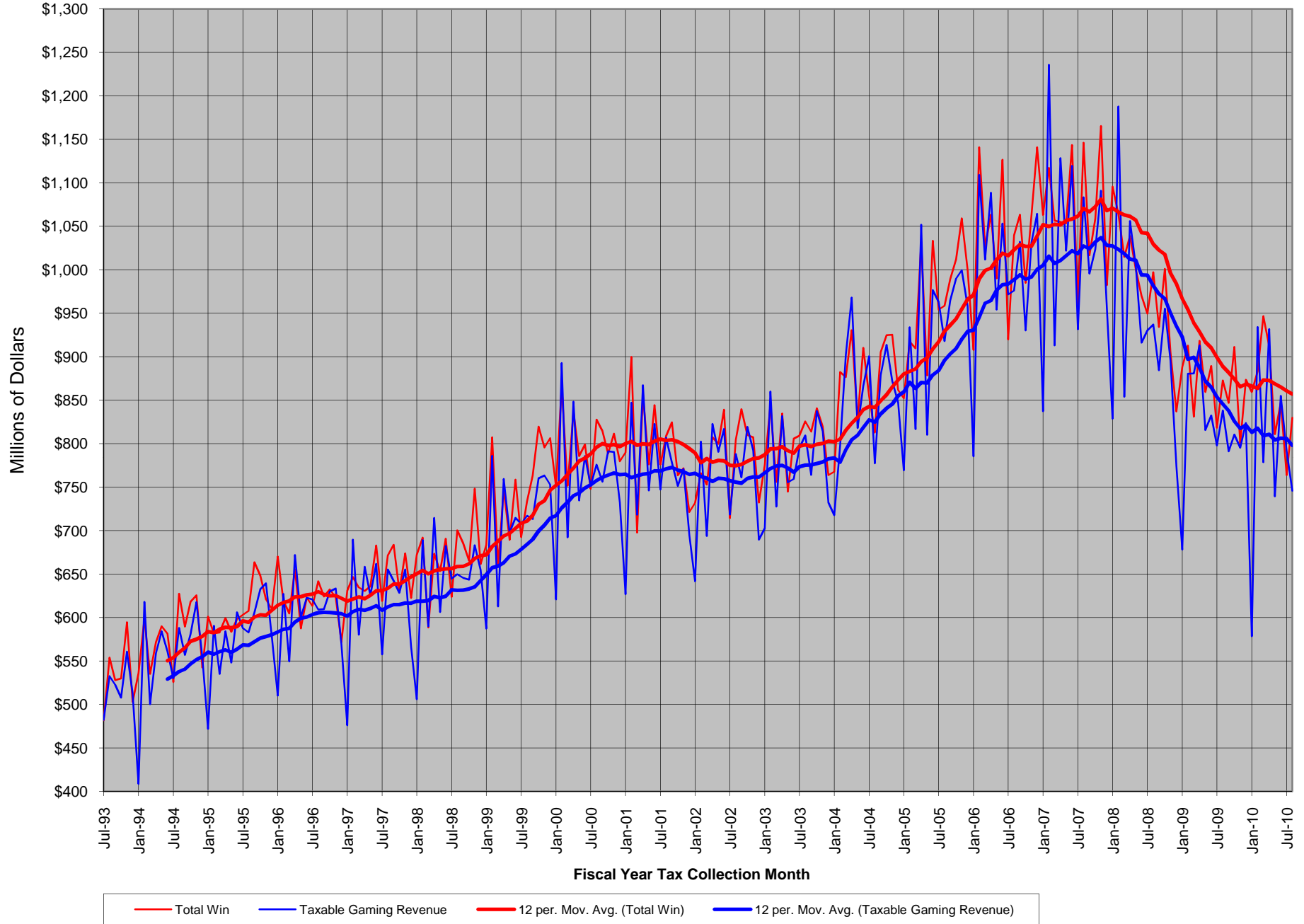


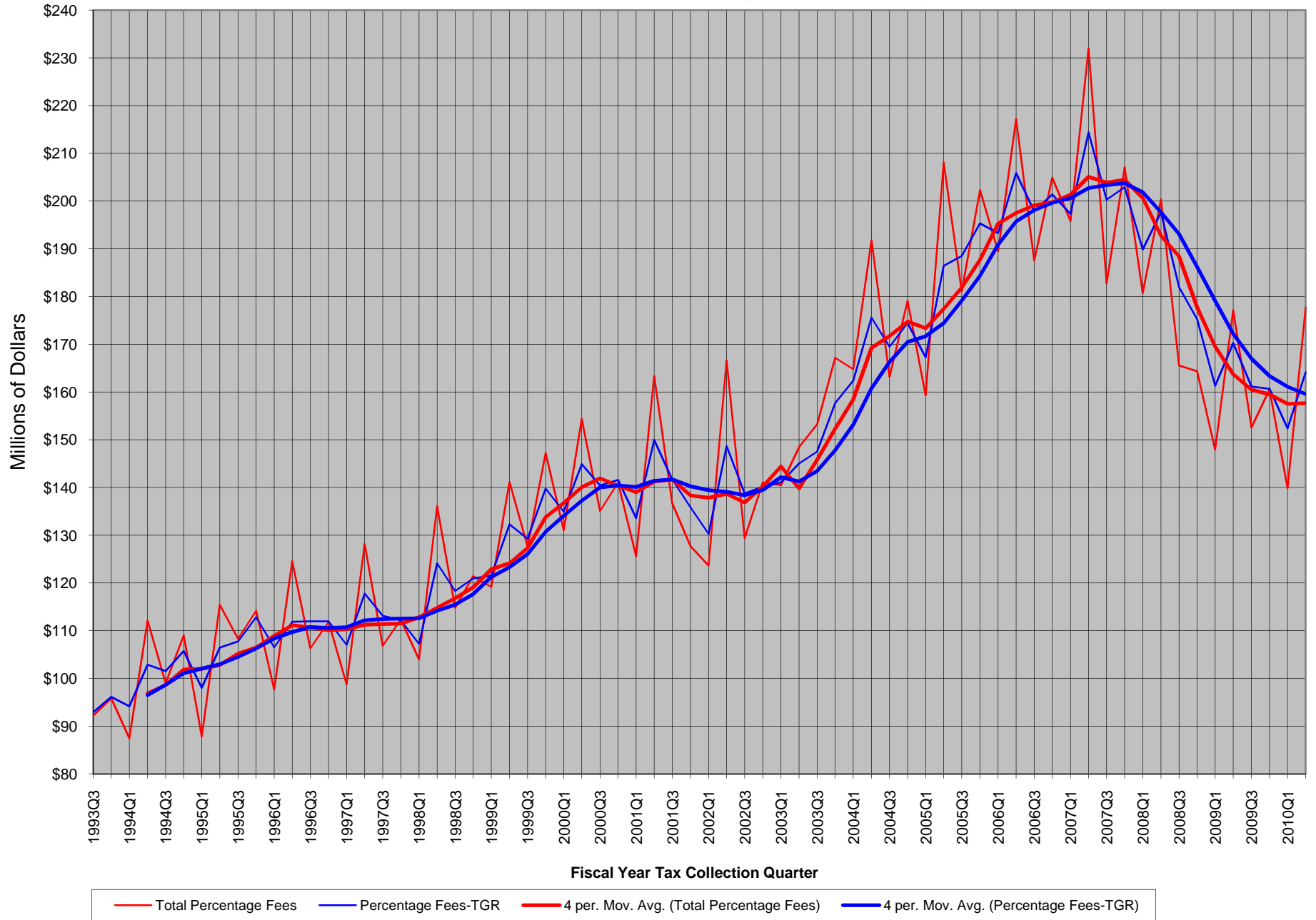
**TABLE 1M**  
**Statewide Total Percentage Fee Collections and**  
**Percentage Fee Collections from Taxable Gaming Revenue**  
**Fiscal Year Tax Collection Basis: July 1993 - July 2010**



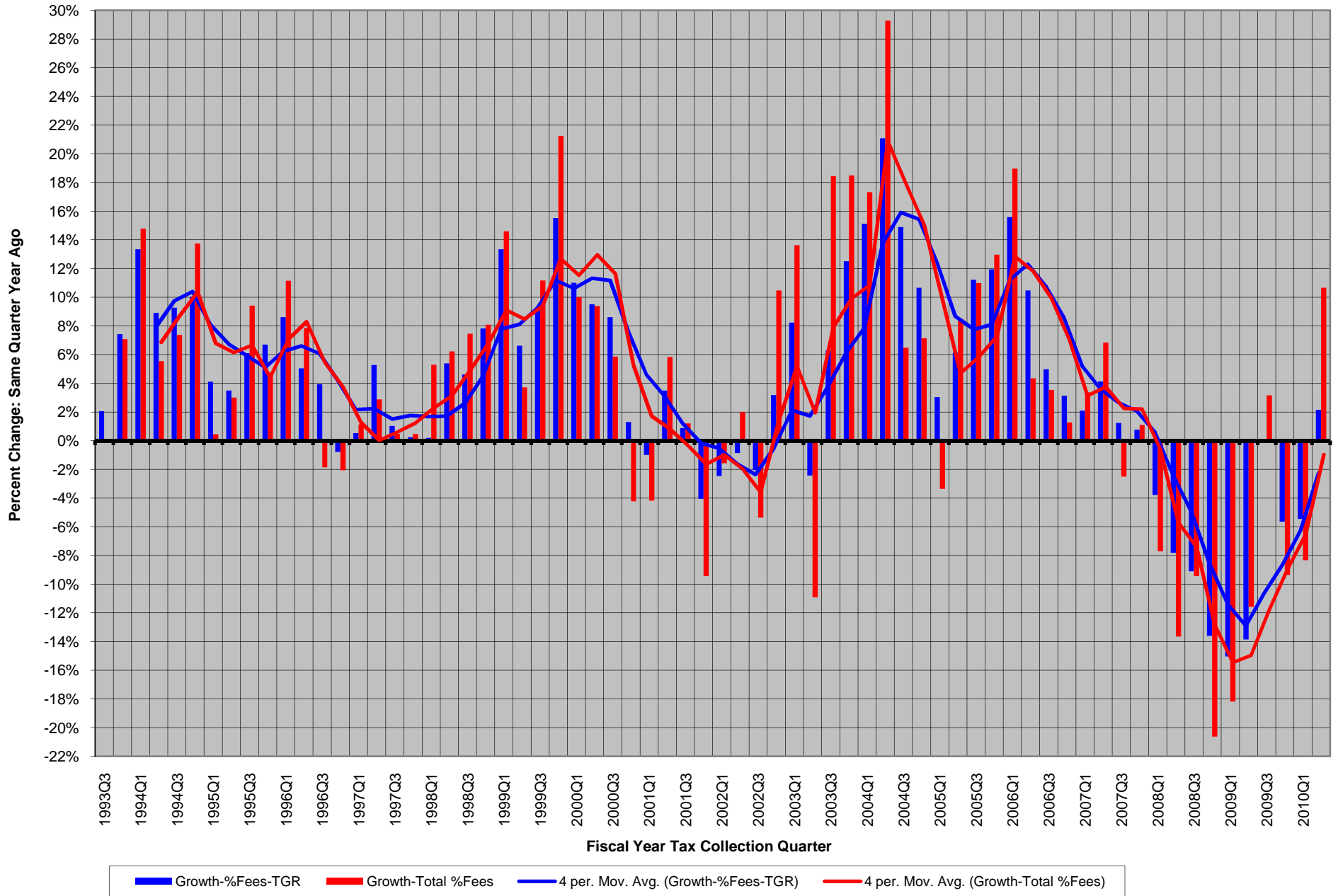
**TABLE 4M**  
**Statewide Total Win and Taxable Gaming Revenue**  
**Fiscal Year Tax Collection Basis: July 1993 - July 2010**



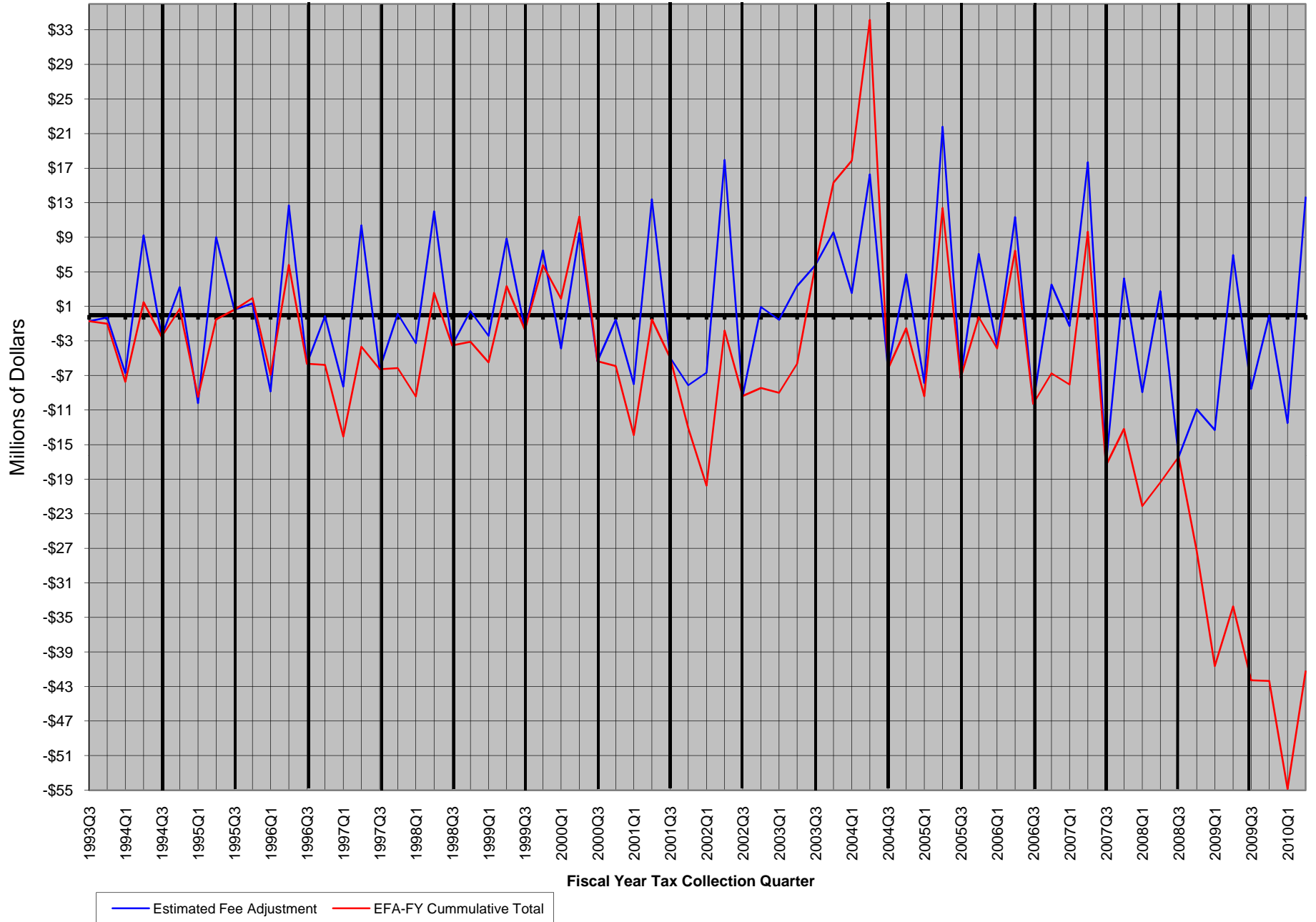
**TABLE1Q**  
**Statewide Total Percentage Fee Collections and**  
**Percentage Fee Collections from Taxable Gaming Revenue**  
**Fiscal Year Tax Collection Basis: 1993:3rd Quarter - 2010:2nd Quarter**



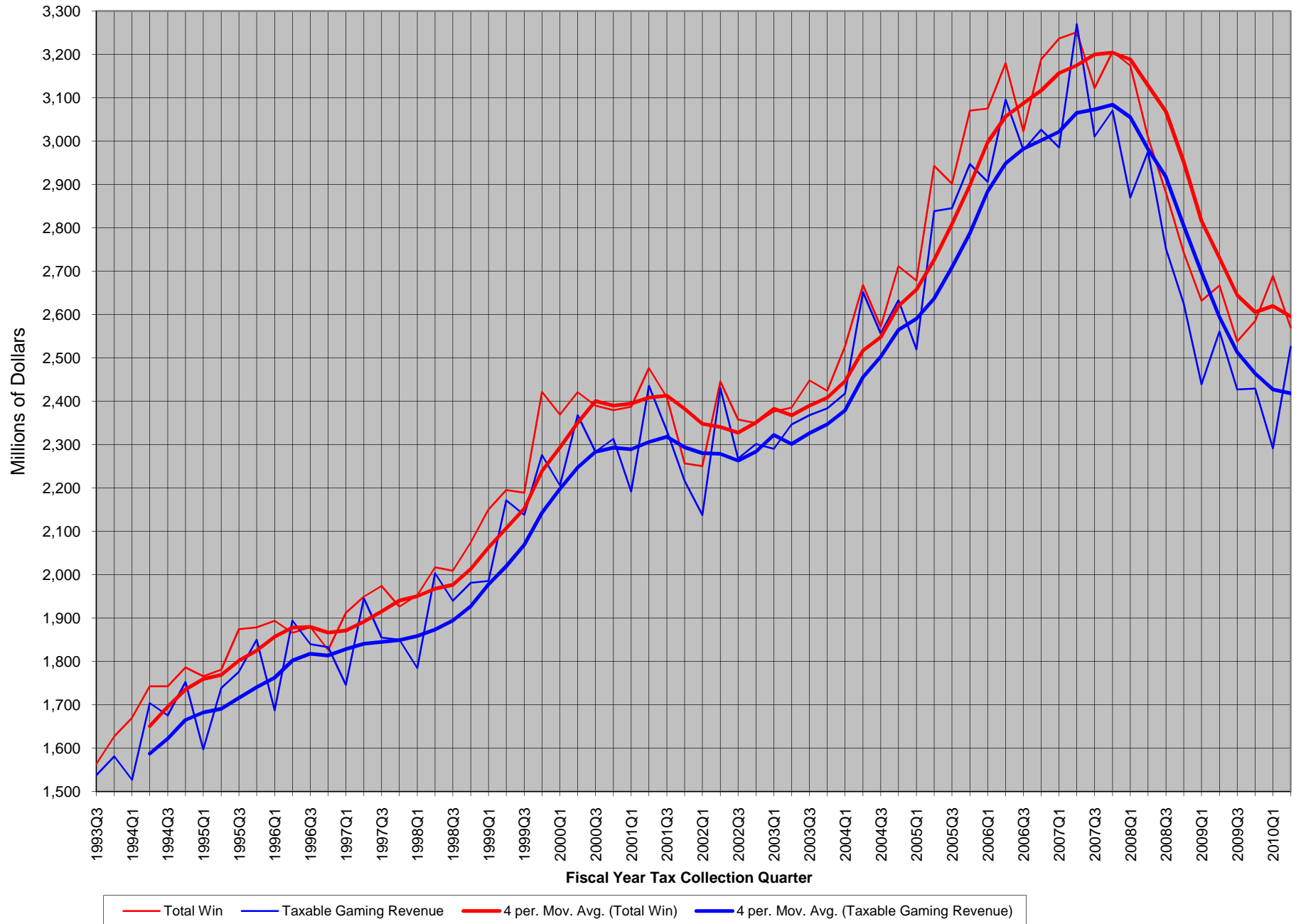
**TABLE 2Q**  
**Comparison of the Growth in Statewide Total Percentage Fee Collections and Percentage Fee Collections from**  
**Taxable Gaming Revenue - Quarter versus Same Quarter Year Ago**  
**Fiscal Year Tax Collection Basis: 1993:3rd Quarter - 2010:1st Quarter**



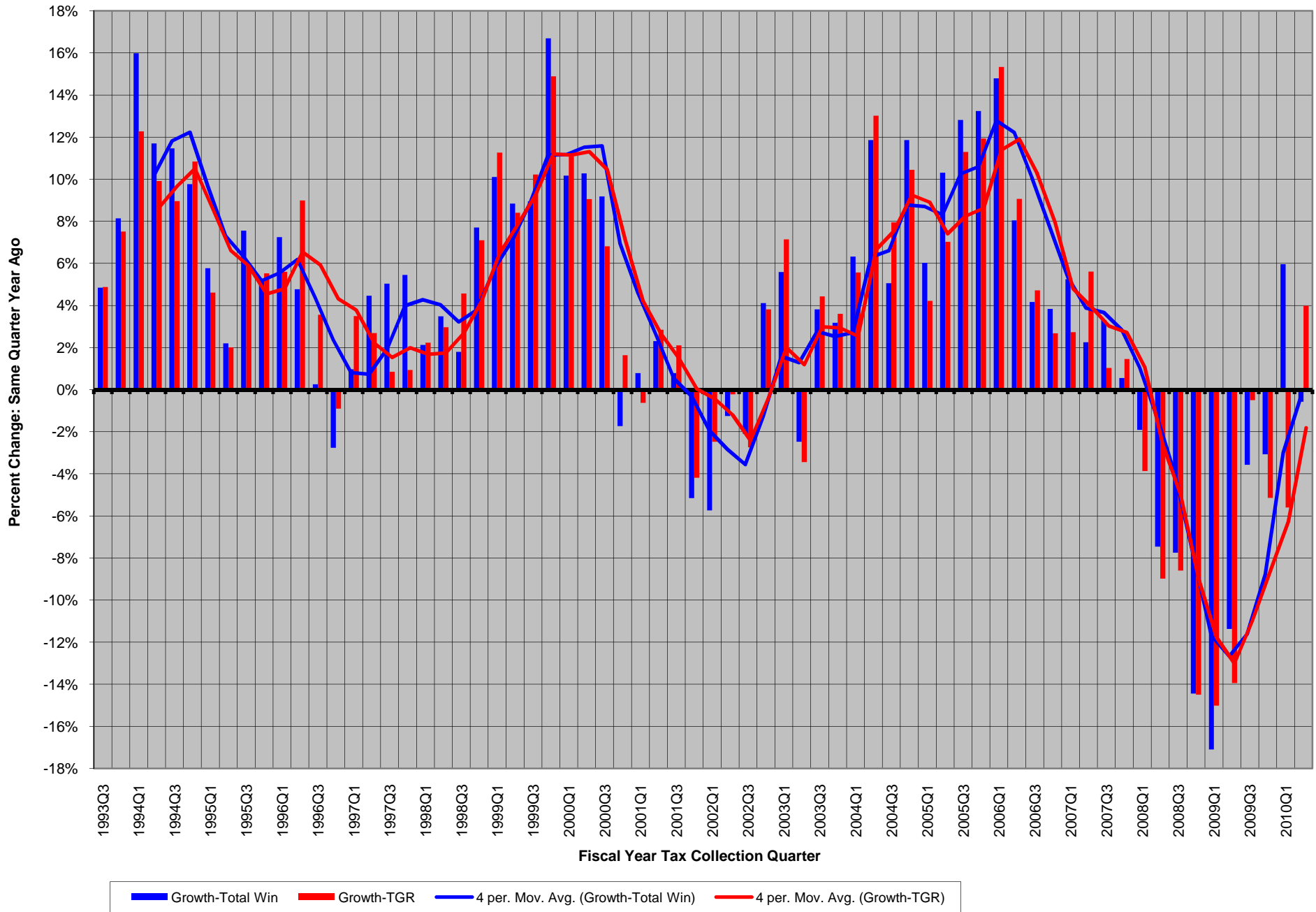
**TABLE3Q**  
**Statewide Estimated Fee Adjustment by Quarter and Cumulative Fiscal Year-to-Date by Fiscal Year**  
**Fiscal Year Tax Collection Basis: 1993:3rd Quarter - 2010:1st Quarter**



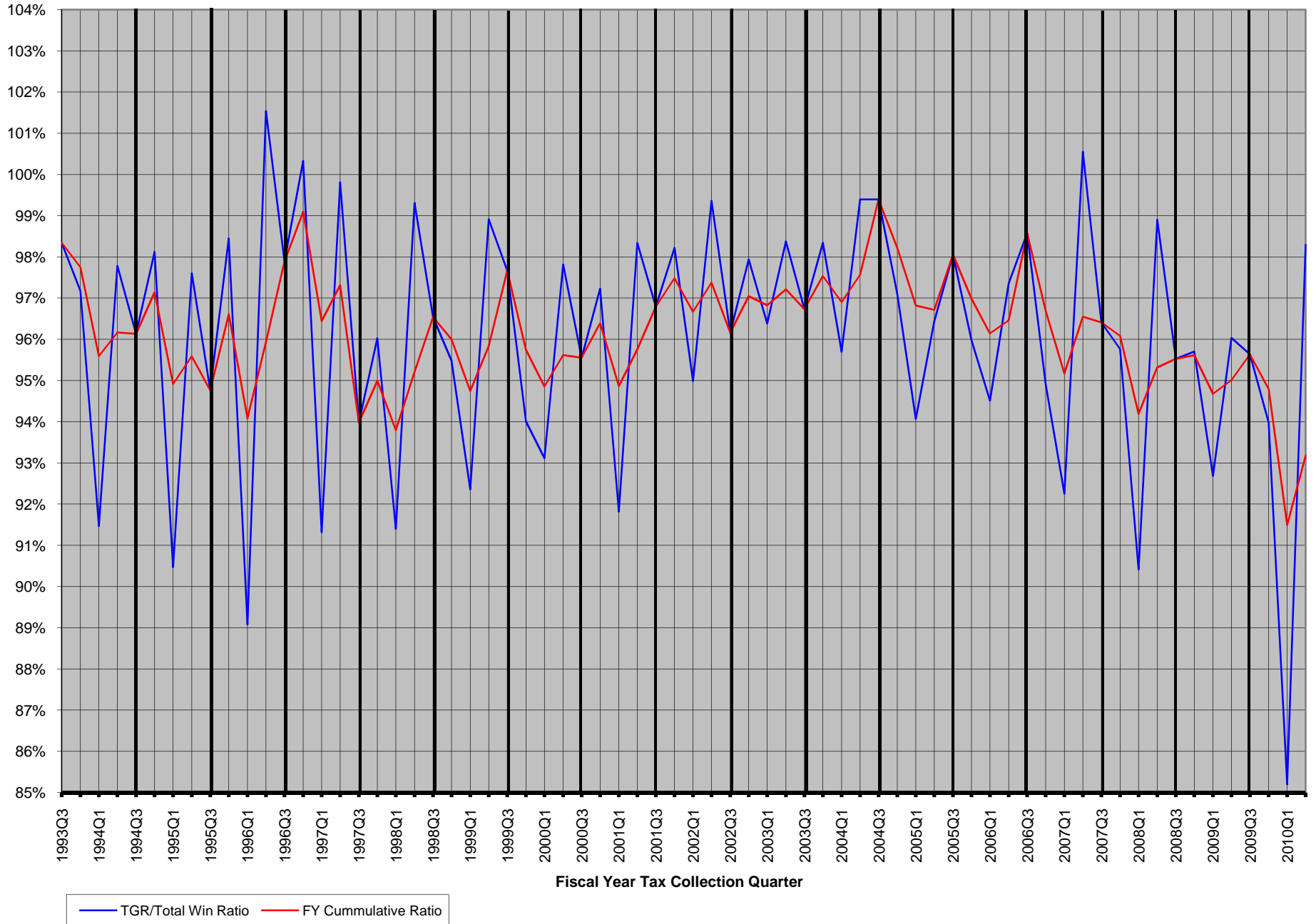
**TALBE 4Q**  
**Statewide Total Win and Taxable Gaming Revenue**  
**Fiscal Year Tax Collection Basis: 1993:3rd Quarter - 2010:2nd Quarter**



**TABLE 5Q**  
**Comparison of the Growth in Statewide Total Win & Taxable Gaming Revenue-Quarter versus Same Quarter Year Ago**  
**Fiscal Year Tax Collection Basis: 1993:3rd Quarter - 2010:2nd Quarter**

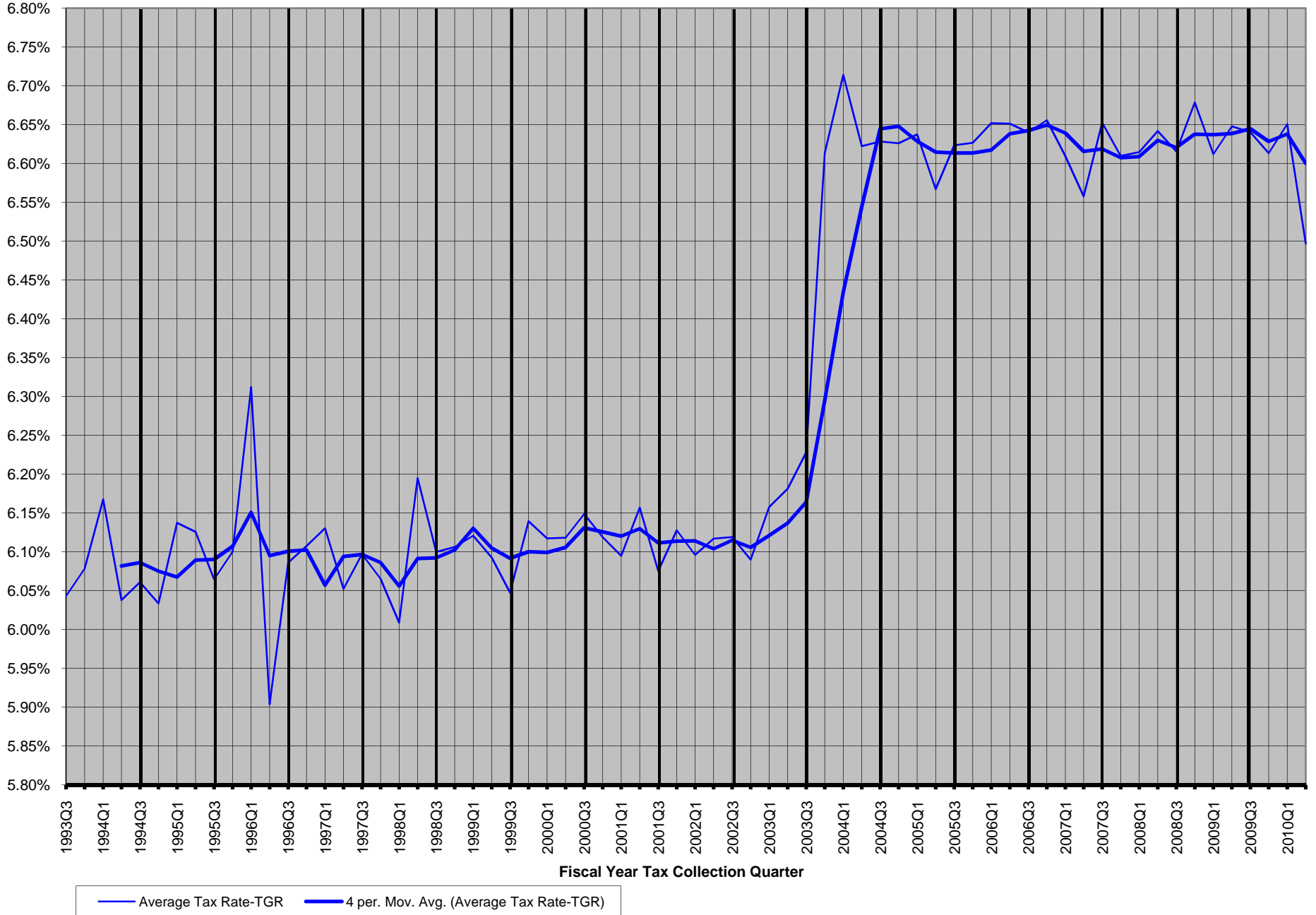


**TABLE 6Q**  
**Statewide Ratio of Taxable Gaming Revenue to Total Win and Cummulative Fiscal Year-to-Date Ratio by Fiscal Year**  
**Fiscal Year Tax Collection Basis: 1993:3rd Quarter - 2010:2nd Quarter**

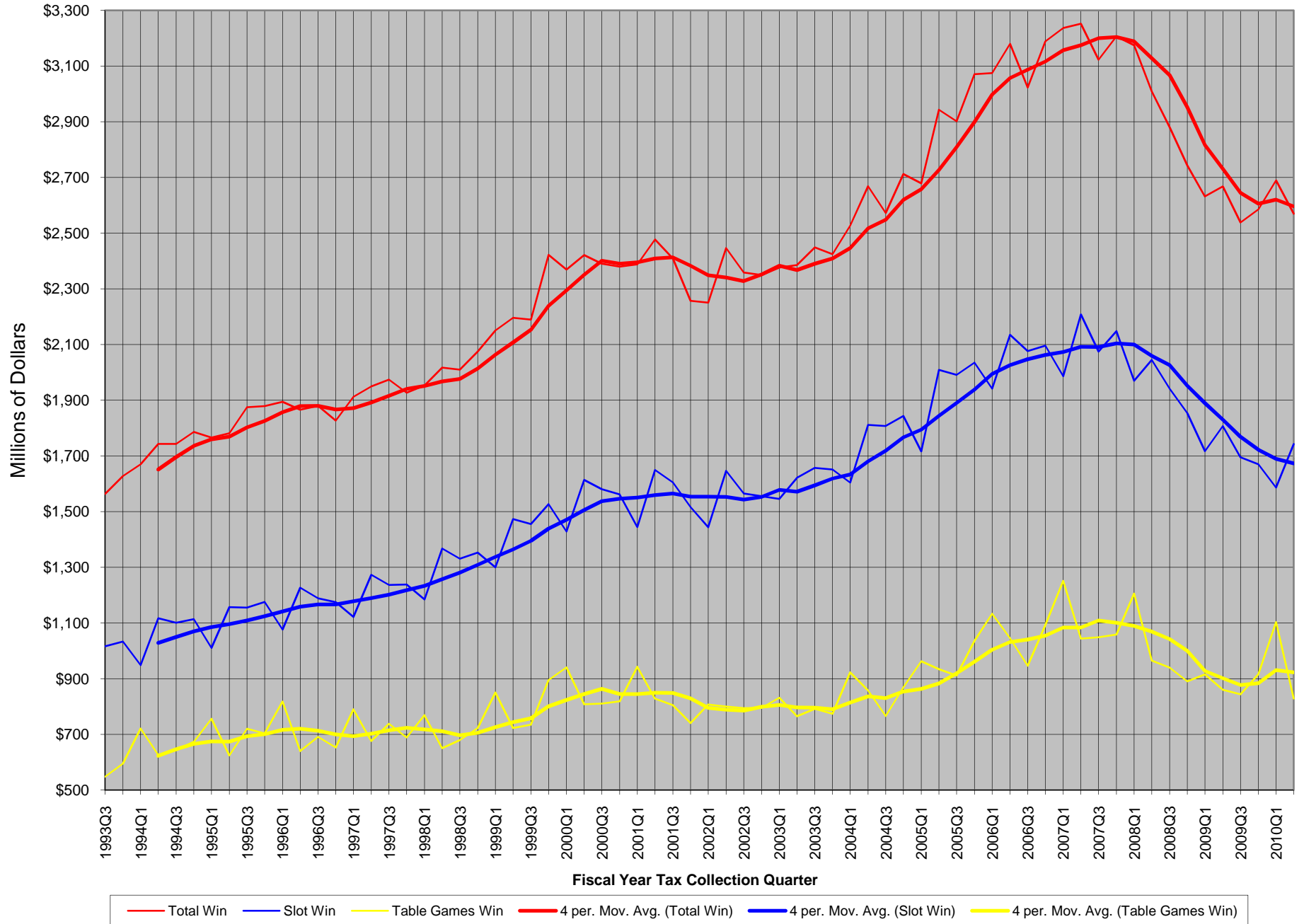




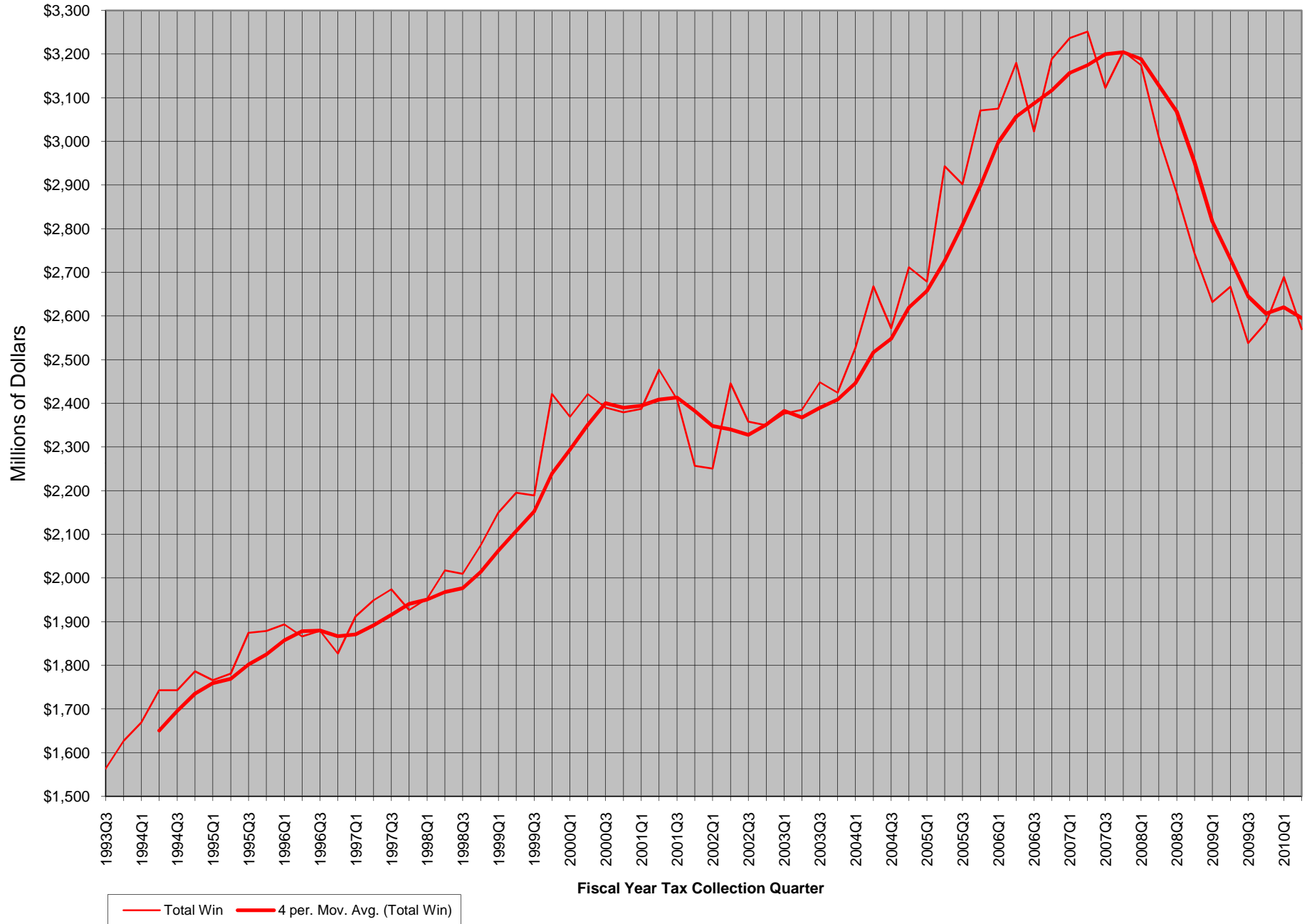
**TABLE 7Q**  
**Statewide Average Tax Rate (Percentage Fees from TGR/Taxable Gaming Revenue (TGR))**  
**Fiscal Year Tax Collection Basis: 1993:3rd Quarter - 2010:2nd Quarter**



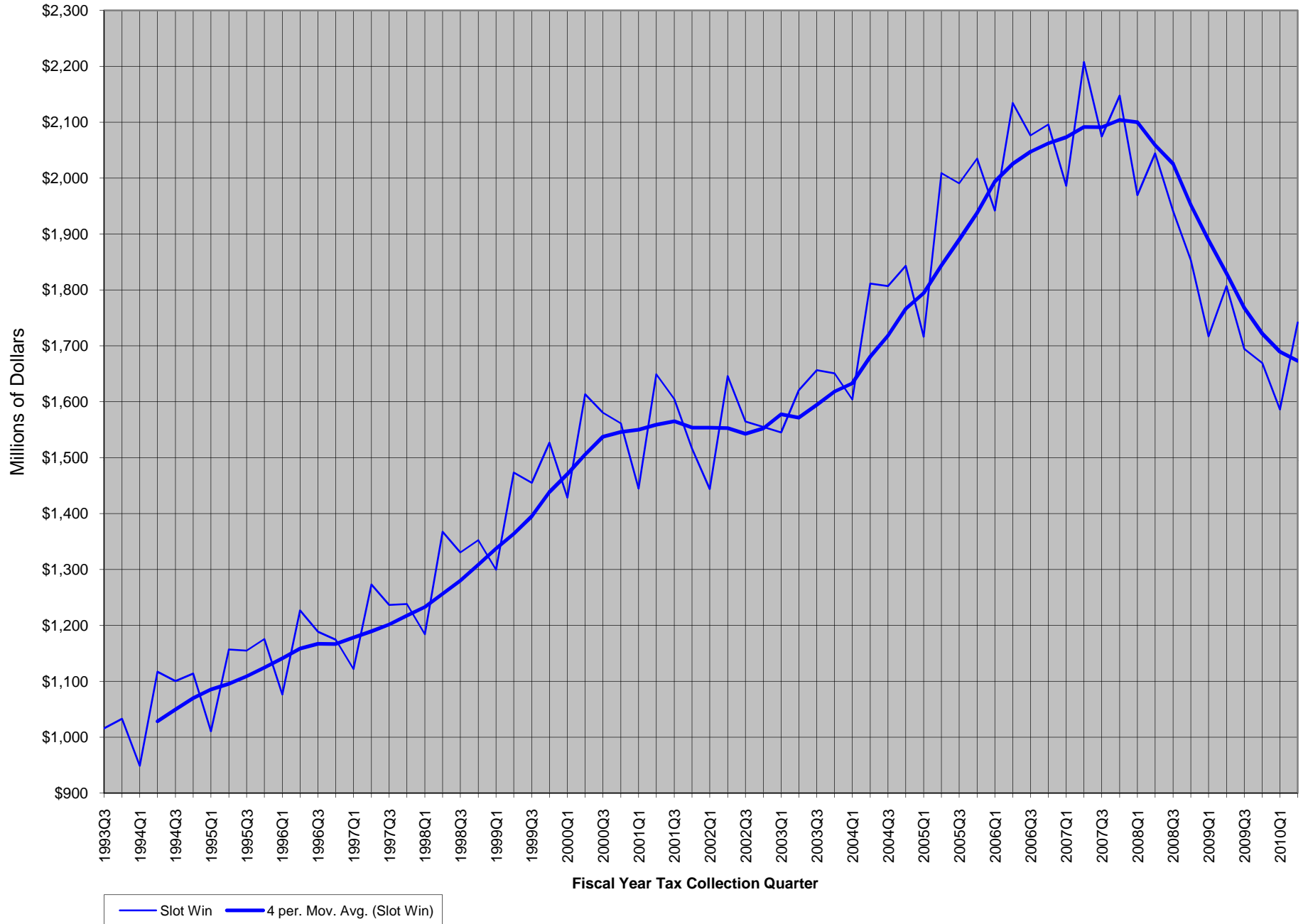
**TABLE 8Q**  
**Statewide Total Win, Slot Win and Table Games Win**  
**Fiscal Year Tax Collection Basis: 1993:3rd Quarter - 2010:2nd Quarter**



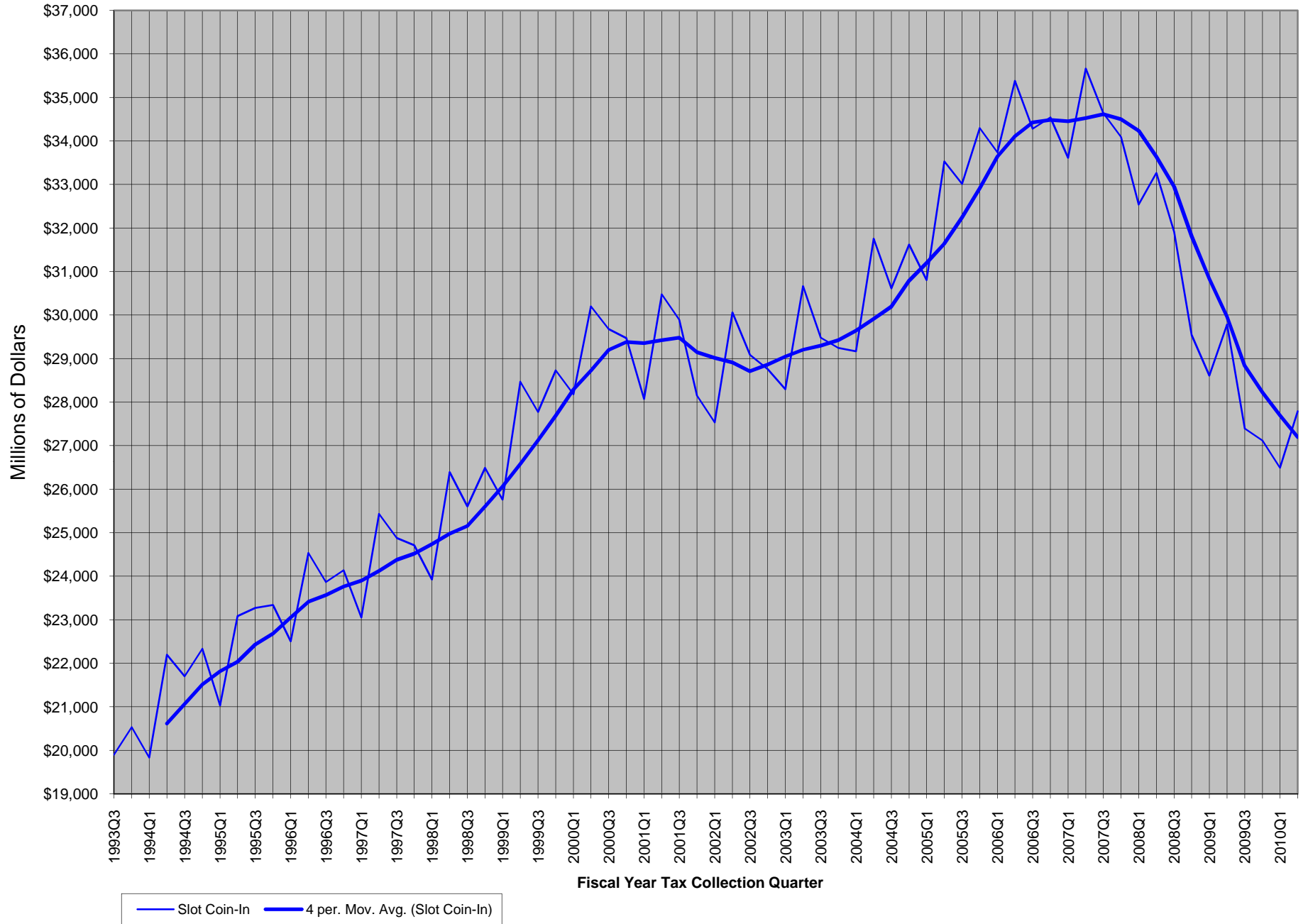
**TABLE 9Q**  
**Statewide Total Win**  
**Fiscal Year Tax Collection Basis: 1993:3rd Quarter - 2010:2nd Quarter**



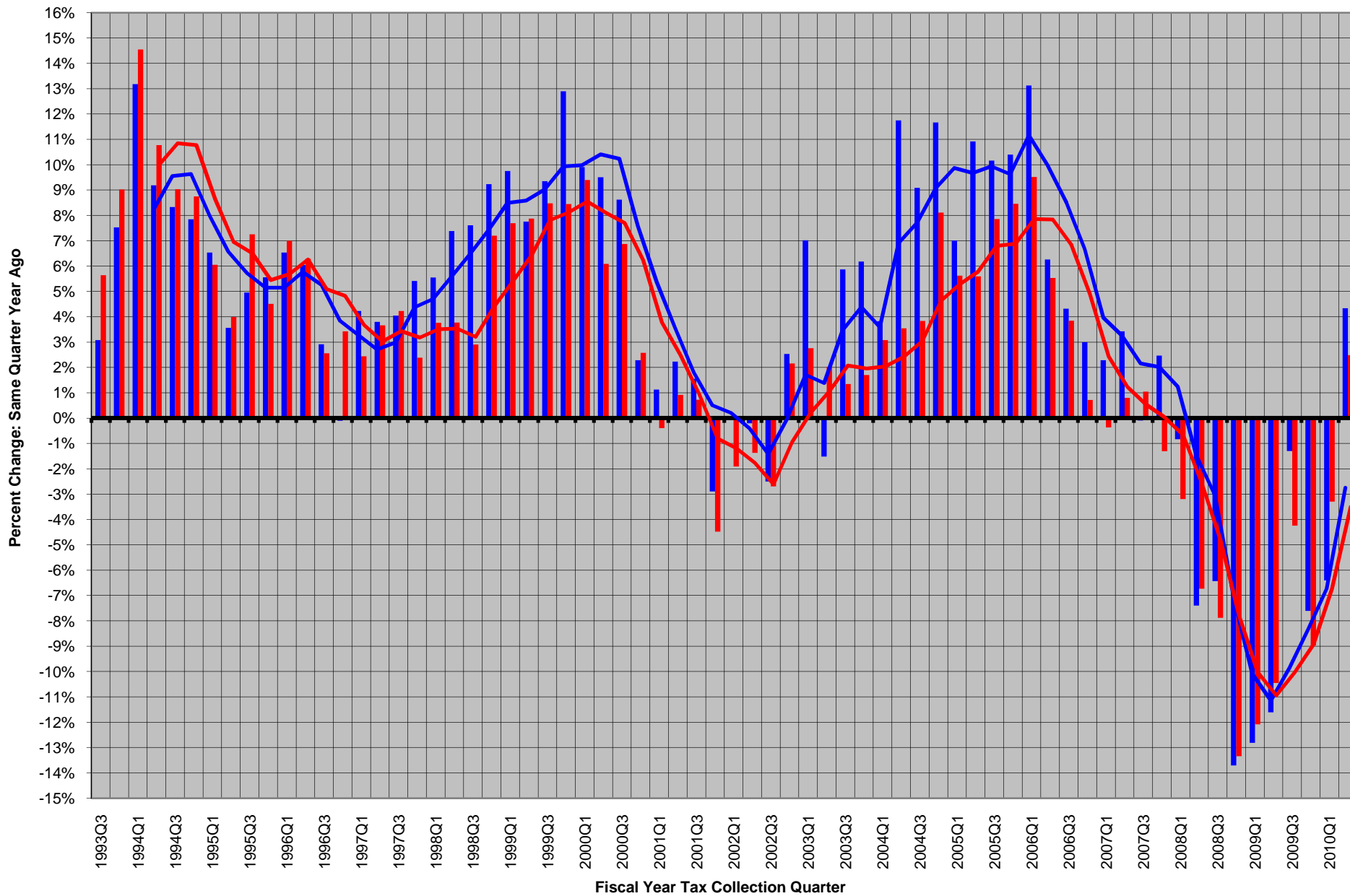
**TABLE 10Q**  
**Statewide Slot Win**  
**Fiscal Year Tax Collection Basis: 1993:3rd Quarter - 2010:2nd Quarter**



**TABLE 11Q**  
**Statewide Slot Coin-In**  
**Fiscal Year Tax Collection Basis: 1993:3rd Quarter - 2010:2nd Quarter**

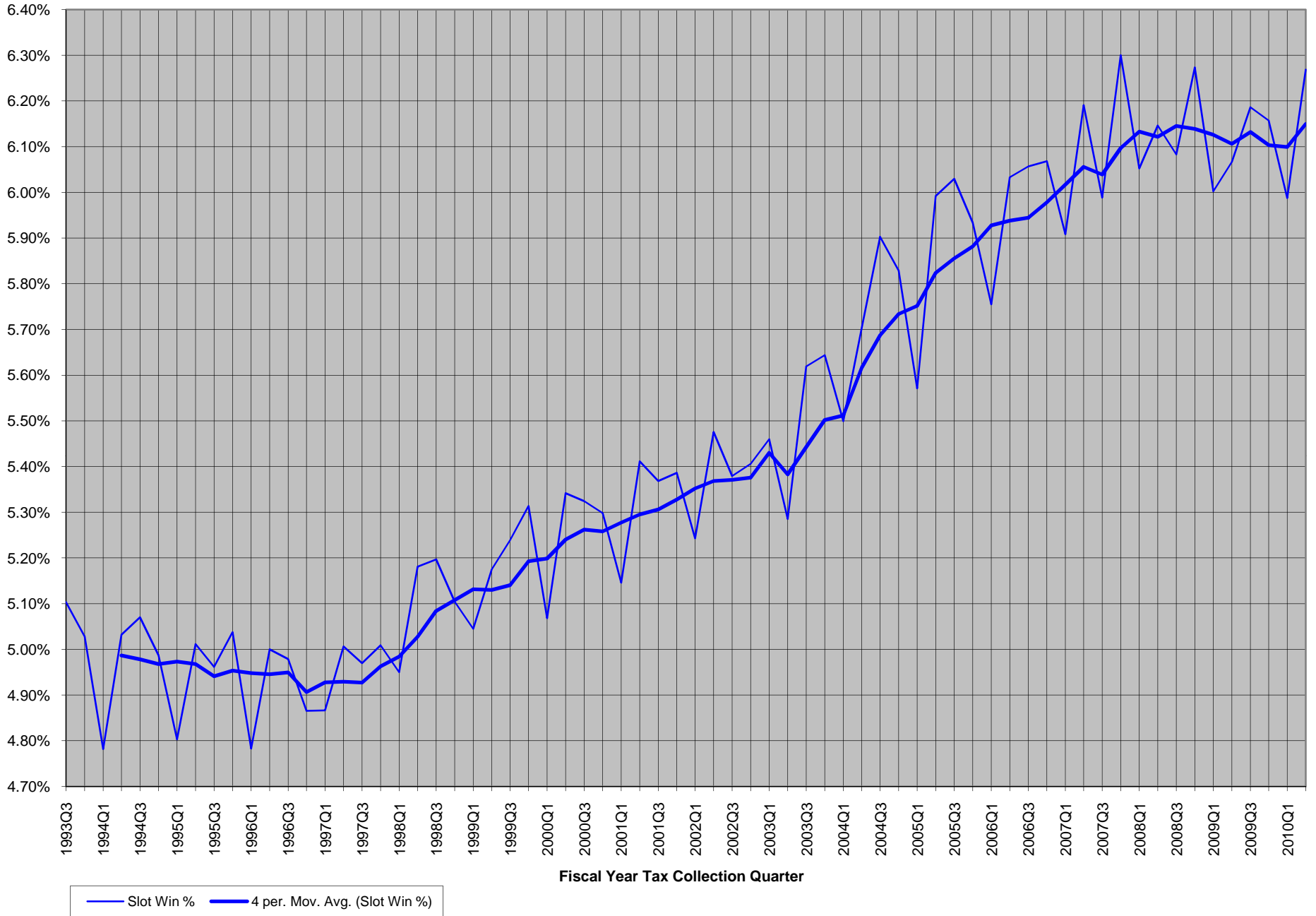


**TABLE 12Q**  
**Comparison of the Growth in Statewide Slot Win and Slot Coin-In - Quarter versus Same Quarter Year Ago**  
**Fiscal Year Tax Collection Basis: 1993:3rd Quarter - 2010:2nd Quarter**

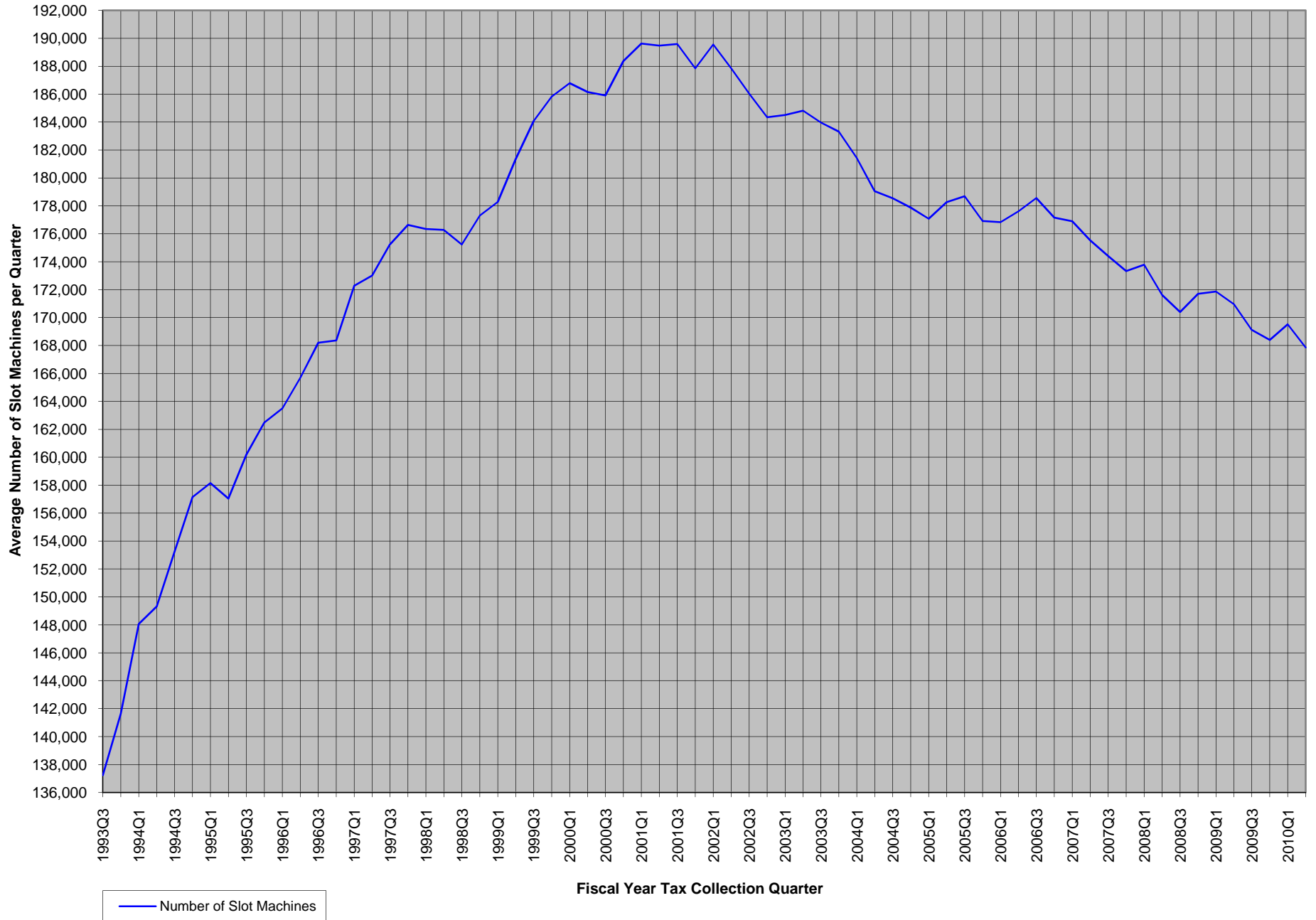


■ Slot Win - Year/Year Growth    
 ■ Slot Coin-In - Year/Year Growth    
—●— 4 per. Mov. Avg. (Slot Win - Year/Year Growth)    
—●— 4 per. Mov. Avg. (Slot Coin-In - Year/Year Growth)

**TABLE 13Q**  
**Statewide Slot Win % (Slot Win / Slot Coin-In)**  
**Fiscal Year Tax Collection Basis: 1993:3rd Quarter - 2010:2nd Quarter**

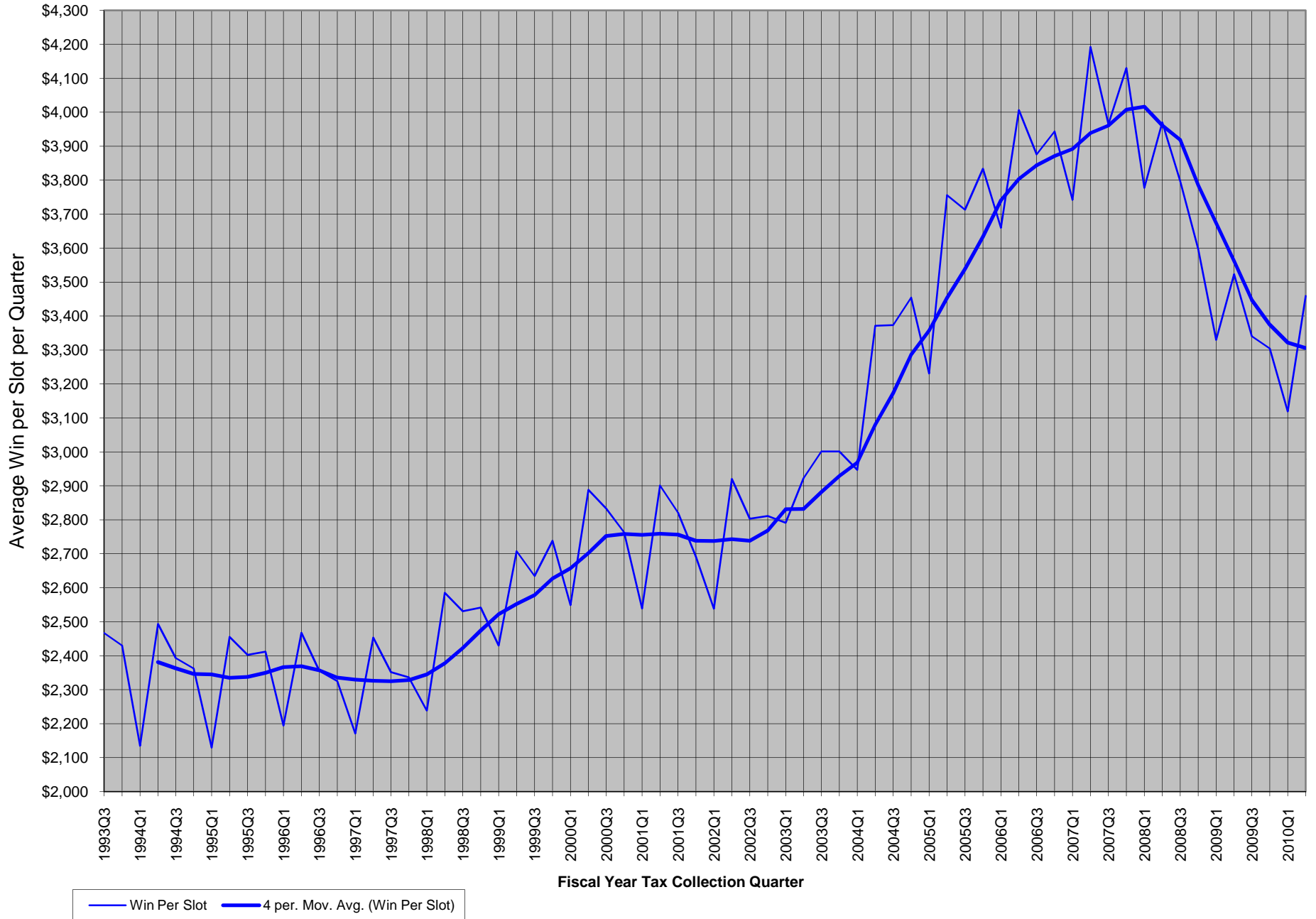


**TABLE 14Q**  
**Statewide Number of Slot Machines (Non-restricted)**  
**Fiscal Year Tax Collection Basis: 1993:3rd Quarter - 2010:2nd Quarter**

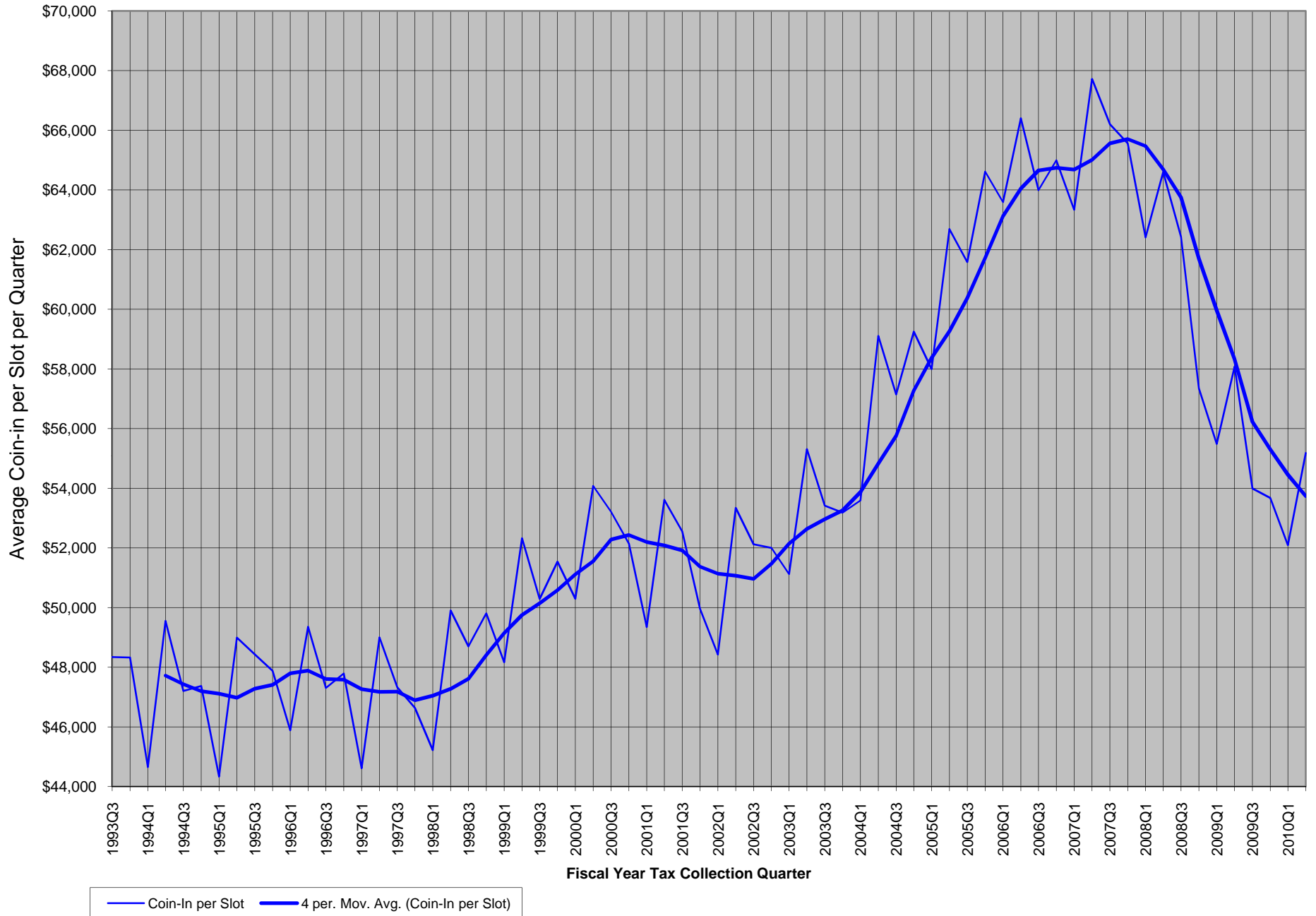




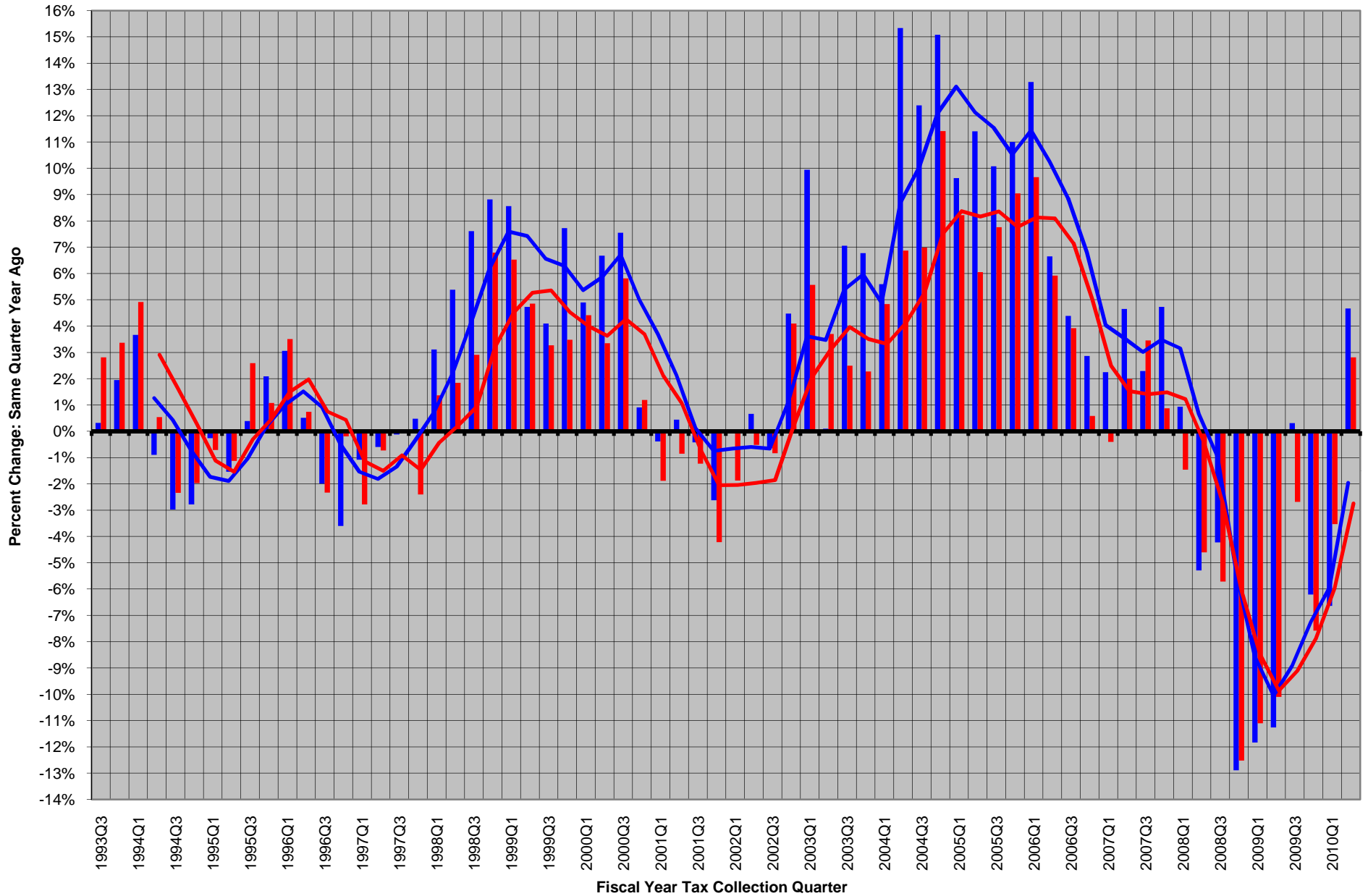
**TABLE 15Q**  
**Statewide Win per Slot**  
**Fiscal Year Tax Collection Basis: 1993:3rd Quarter - 2010:2nd Quarter**



**TABLE 16Q**  
**Statewide Coin-In per Slot**  
**Fiscal Year Tax Collection Basis: 1993:3rd Quarter - 2010:2nd Quarter**

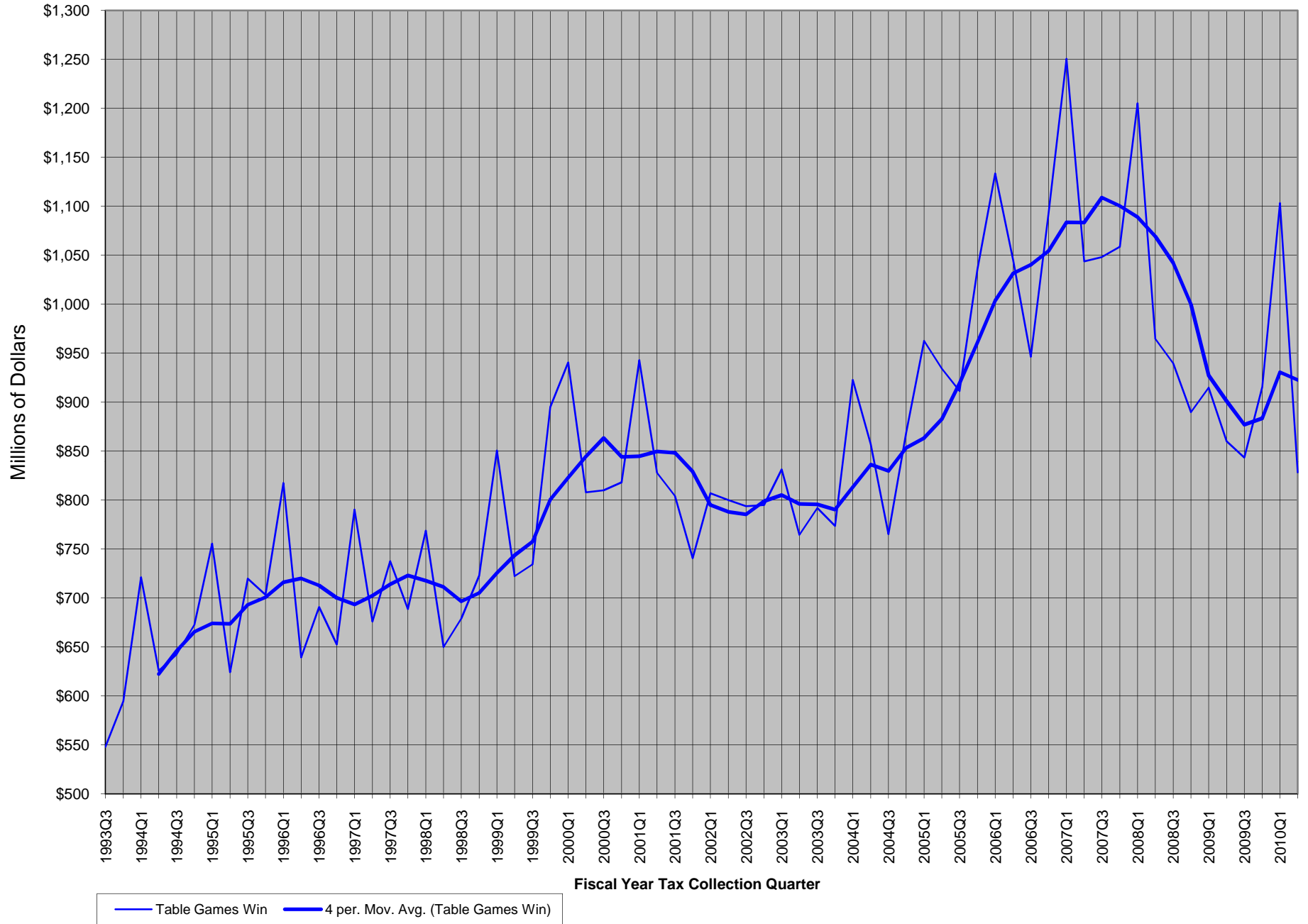


**TABLE 17Q**  
**Comparison of the Growth in Statewide Win per Slot and Coin-In per Slot - Quarter versus Same Quarter Year Ago**  
**Fiscal Year Tax Collection Basis: 1993:3rd Quarter - 2010:2nd Quarter**

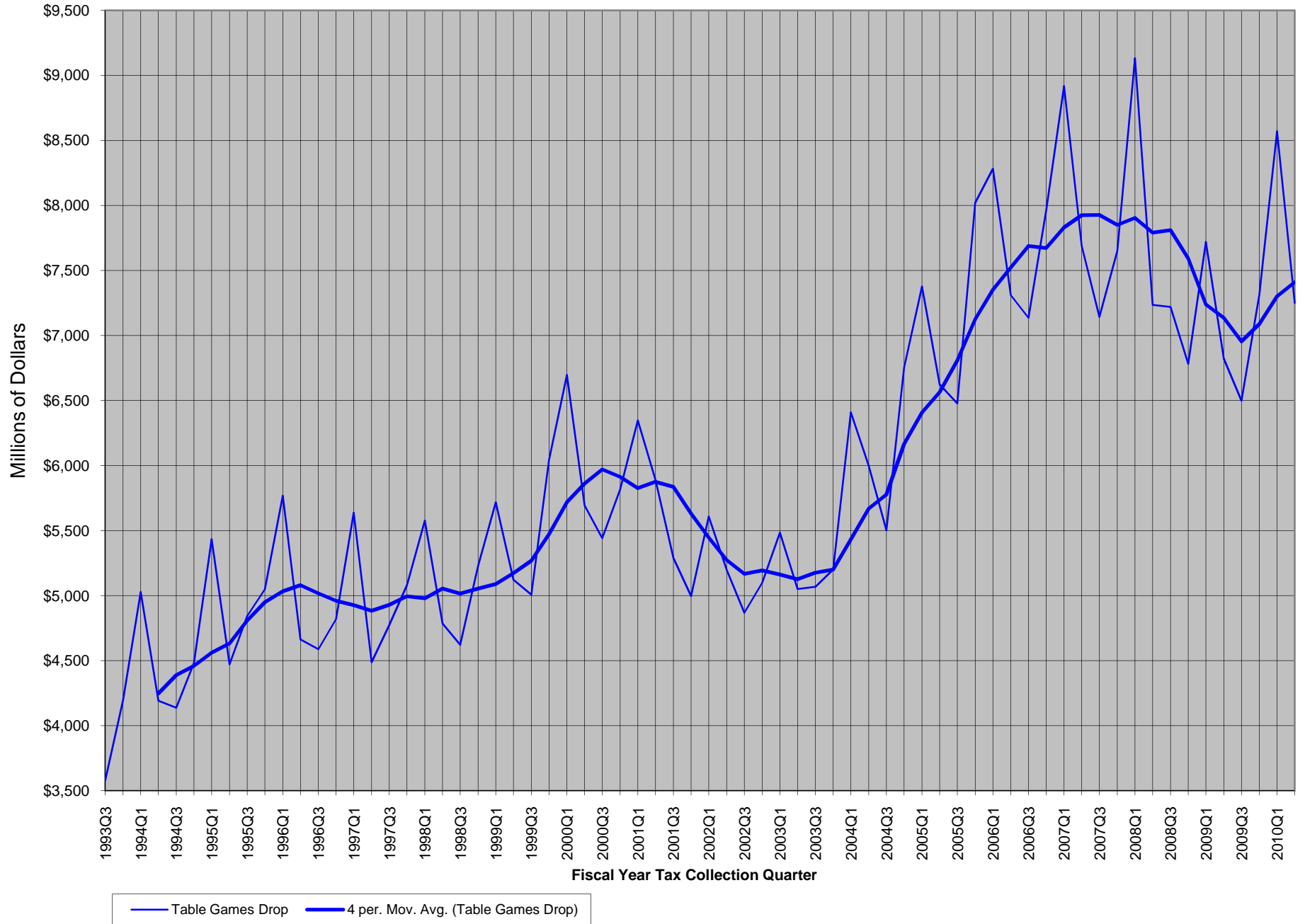


■ Win Per Slot - Y/Y Growth    
 ■ Coin-In per Slot - Y/Y Growth    
 — 4 per. Mov. Avg. (Win Per Slot - Y/Y Growth)    
 — 4 per. Mov. Avg. (Coin-In per Slot - Y/Y Growth)

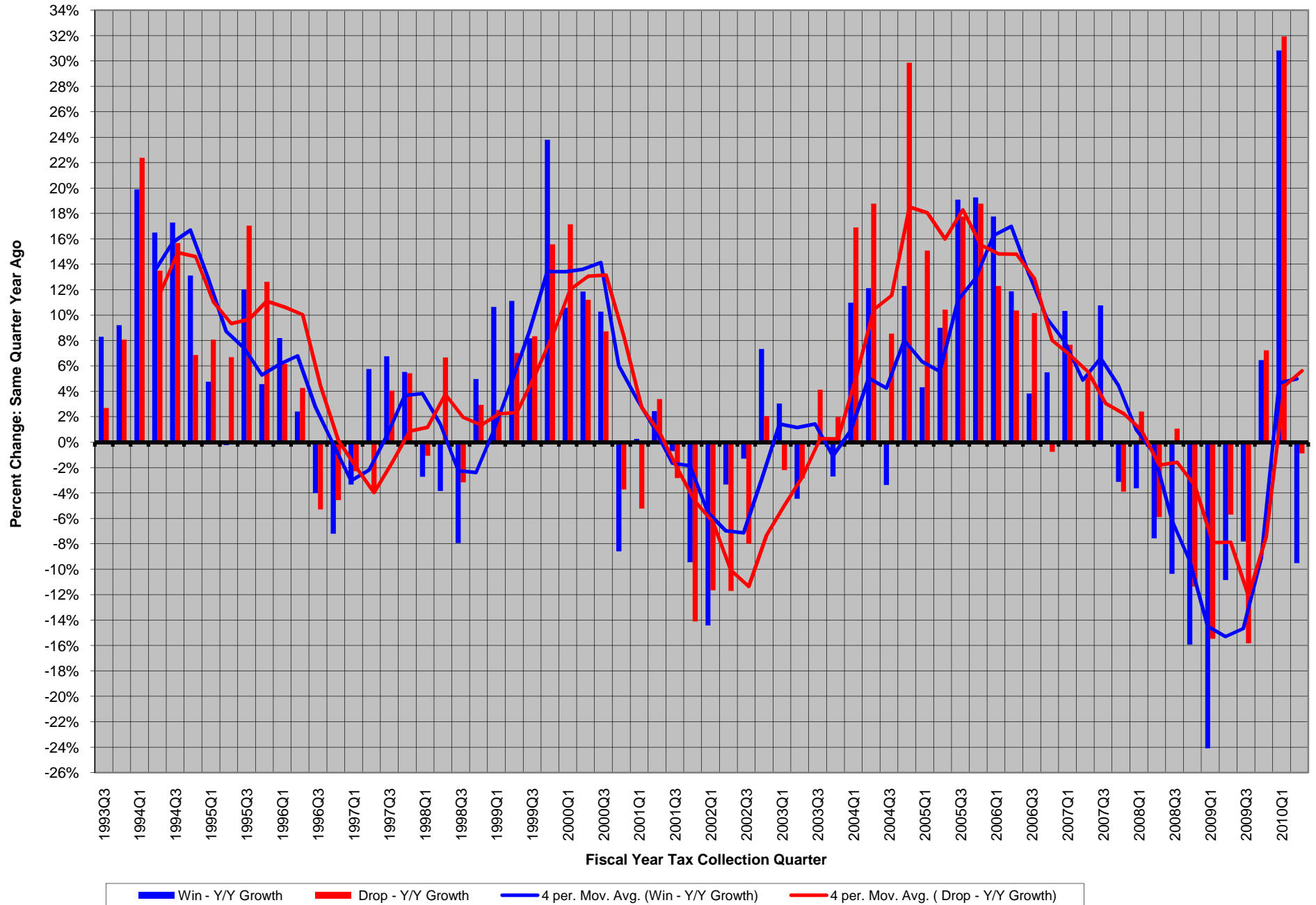
**TABLE 18Q**  
**Statewide Table Games Win**  
**Fiscal Year Tax Collection Basis: 1993:3rd Quarter - 2010:2nd Quarter**



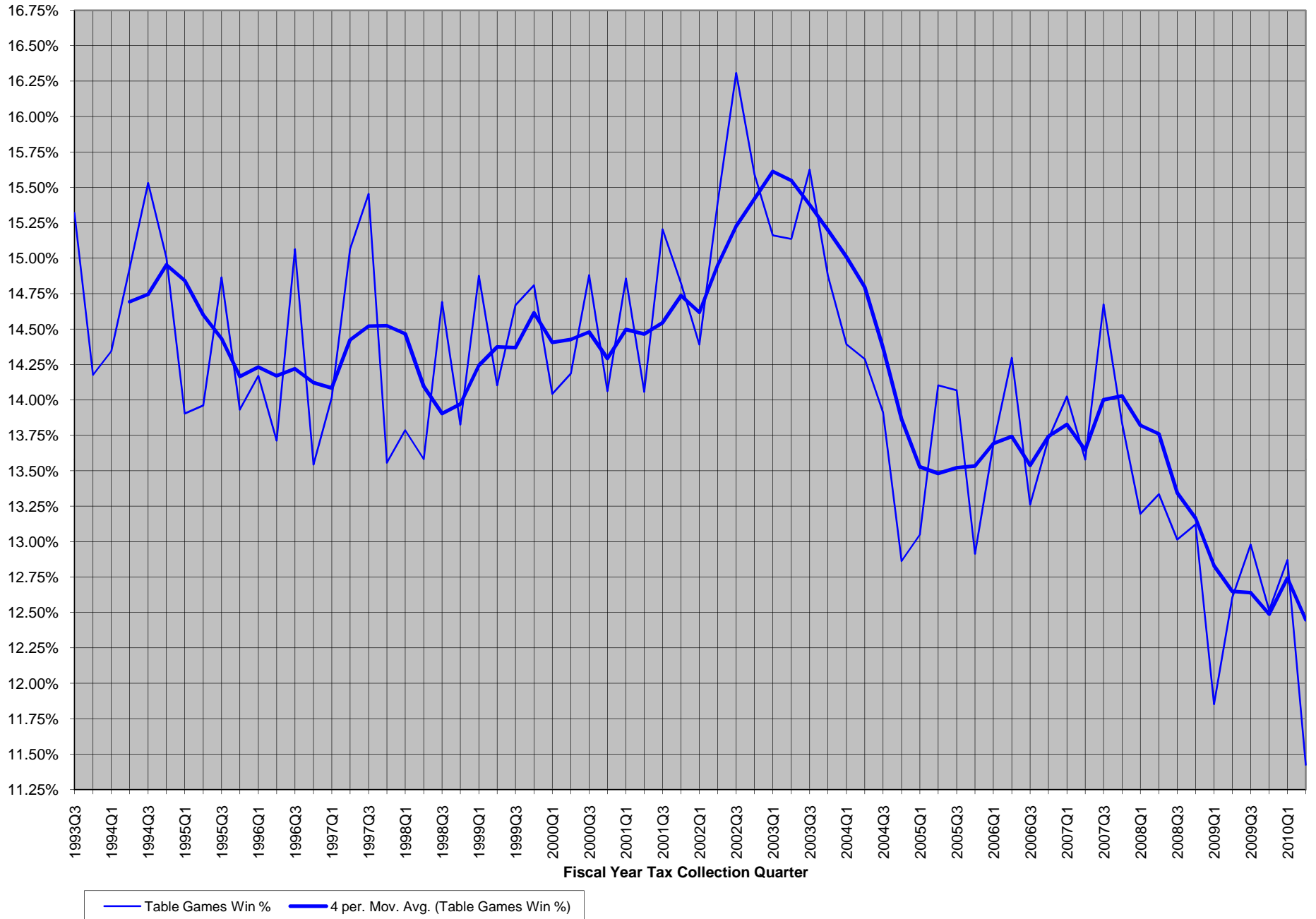
**TABLE 19Q**  
**Statewide Table Games Drop**  
**Fiscal Year Tax Collection Basis: 1993:3rd Quarter - 2010:2nd Quarter**



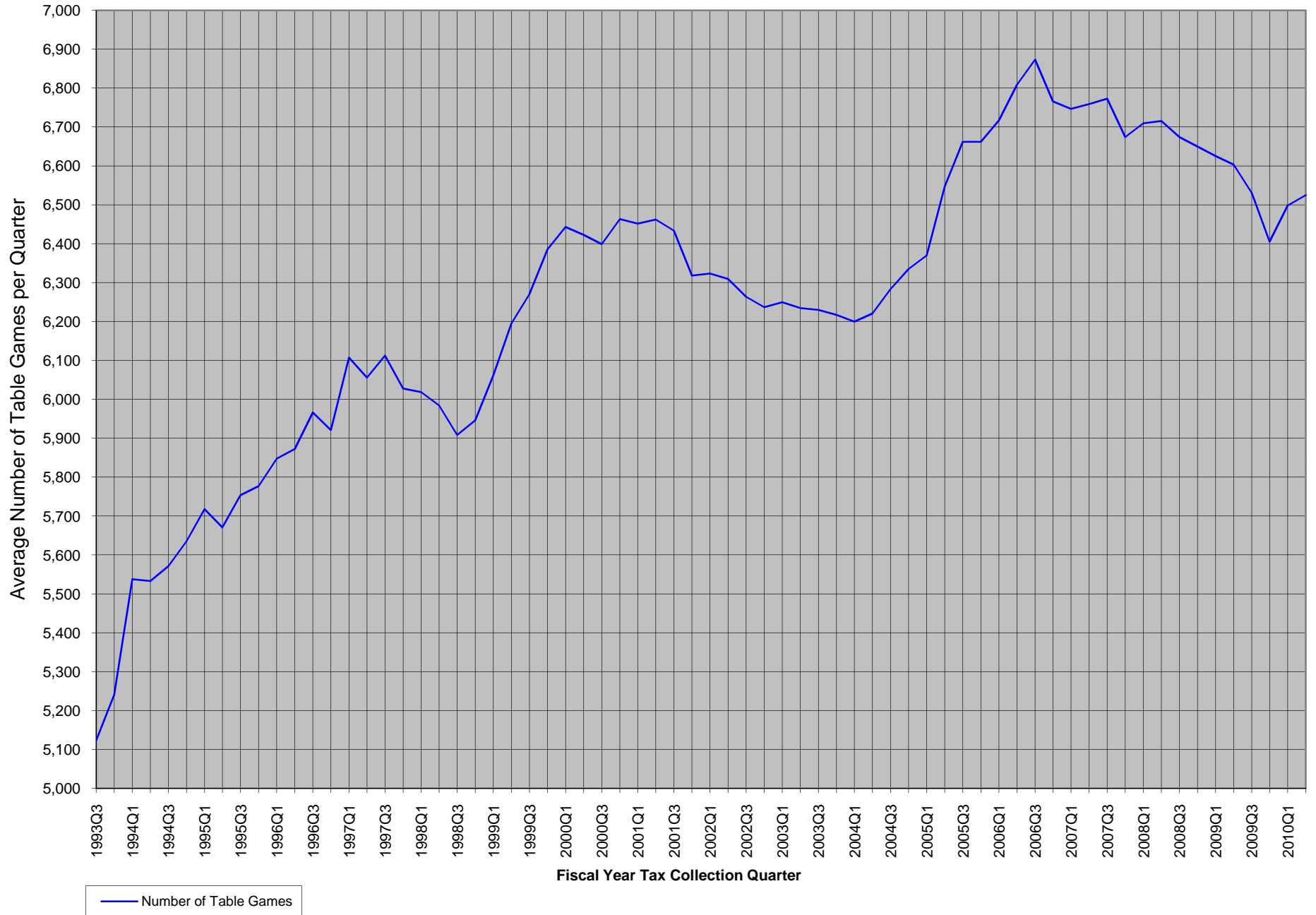
**TABLE 20Q**  
**Comparison of the Growth in Statewide Table Games Win & Table Games Drop - Quarter versus Same Quarter Year Ago**  
**Fiscal Year Tax Collection Basis: 1993:3rd Quarter - 2010:2nd Quarter**



**TABLE 21Q**  
**Statewide Table Games Win % (Table Games Win / Table Games Drop)**  
**Fiscal Year Tax Collection Basis: 1993:3rd Quarter - 2010:2nd Quarter**

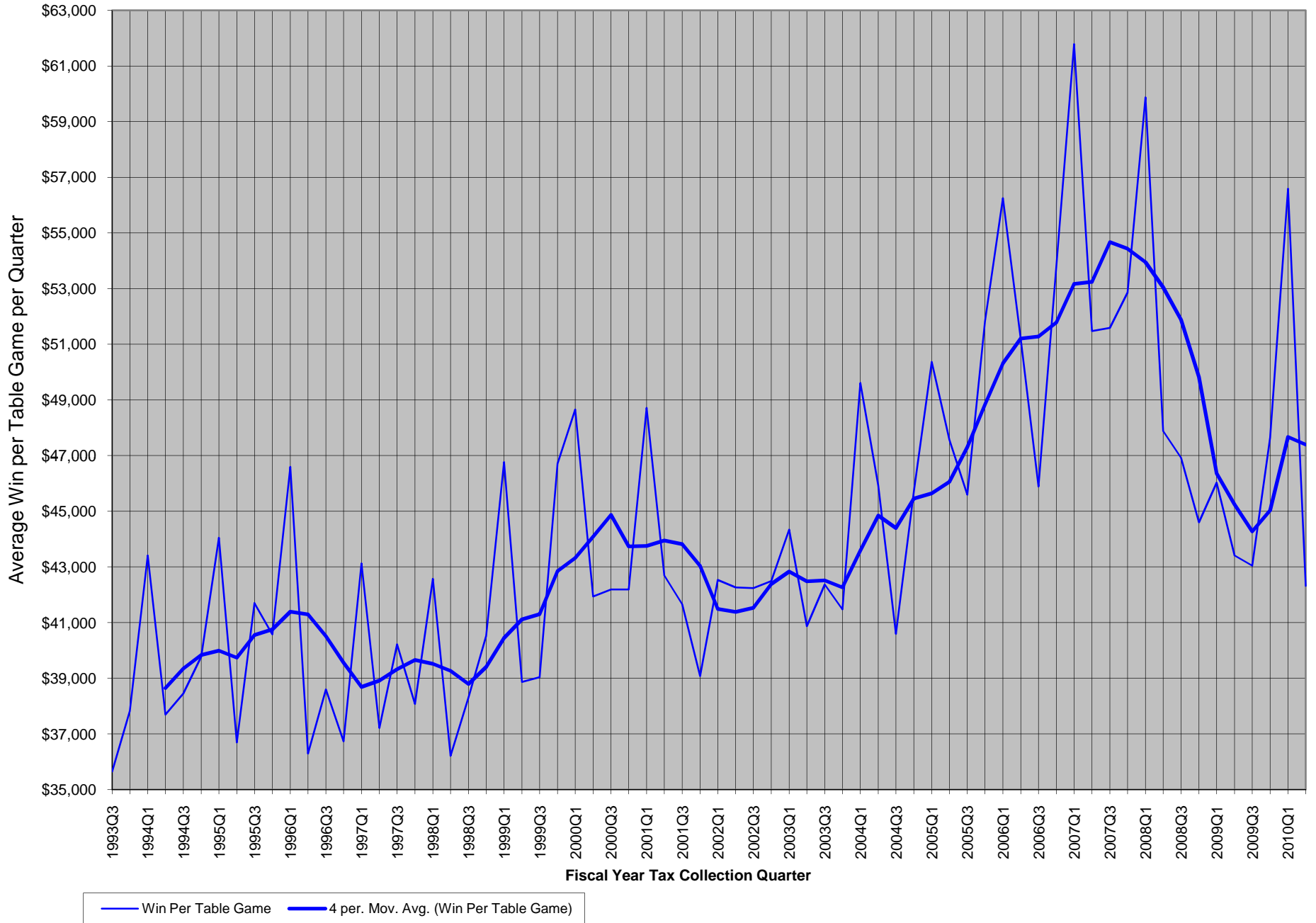


**TABLE 22Q**  
**Statewide Number of Table Games**  
**Fiscal Year Tax Collection Basis: 1993:3rd Quarter - 2010:2nd Quarter**

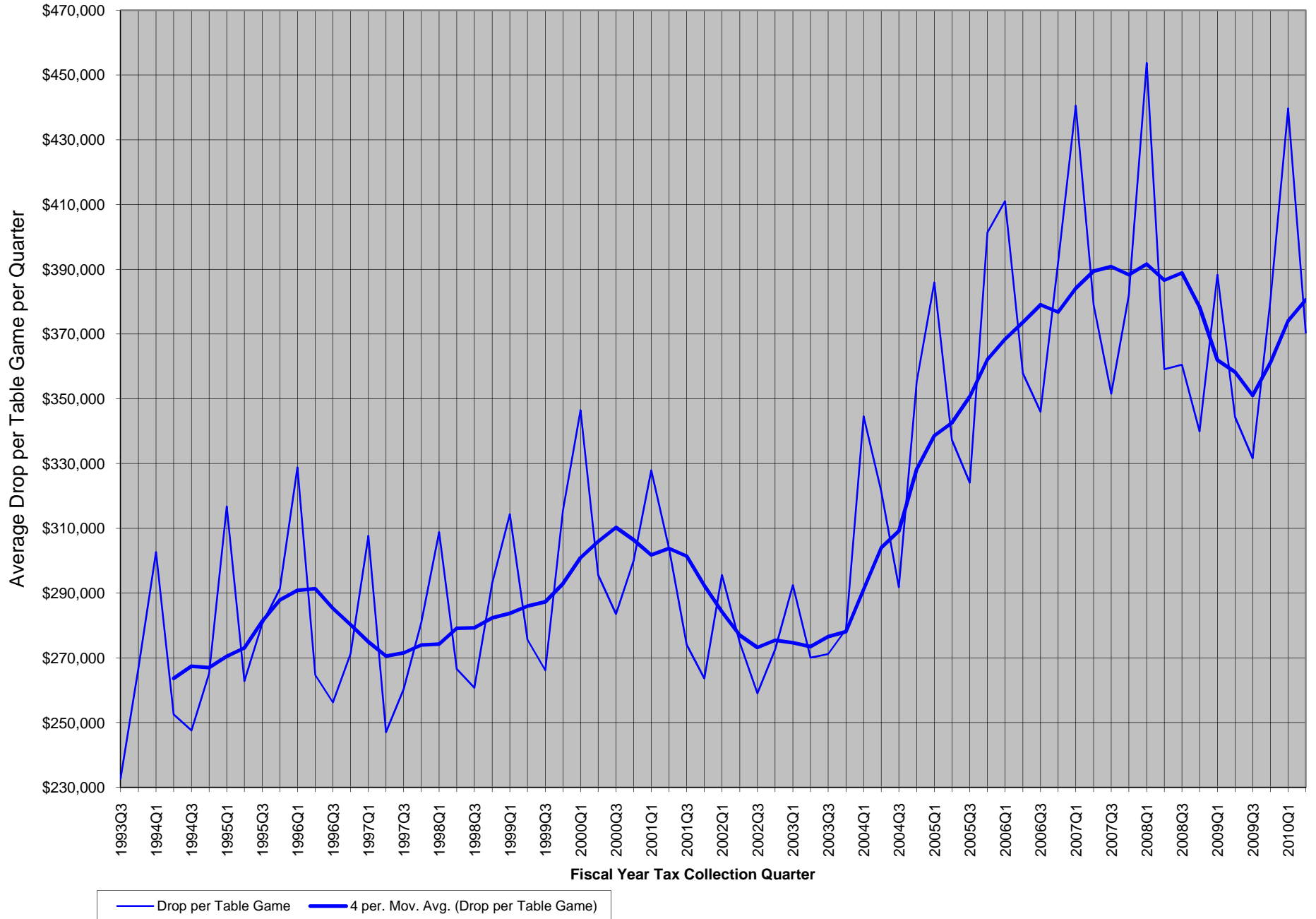




**TABLE 23Q**  
**Statewide Win per Table Game**  
**Fiscal Year Tax Collection Basis: 1993:3rd Quarter - 2010:2nd Quarter**



**TABLE 24Q**  
**Statewide Drop per Table Game**  
**Fiscal Year Tax Collection Basis: 1993:3rd Quarter - 2010:2nd Quarter**



**TABLE 25Q**  
**Comparison of the Growth in Statewide Win per Table Game and**  
**Drop per Game - Quarter versus Same Quarter Year Ago**  
**Fiscal Year Tax Collection Basis: 1993:3rd Quarter - 2010:2nd Quarter**

